

**IDI1 Antibody (monoclonal) (M01)**  
**Mouse monoclonal antibody raised against a partial recombinant IDI1.**  
**Catalog # AT2481a**

**Specification**

---

**IDI1 Antibody (monoclonal) (M01) - Product Information**

Application	WB, E
Primary Accession	<a href="#">Q13907</a>
Other Accession	<a href="#">NM_004508</a>
Reactivity	Human
Host	Mouse
Clonality	Monoclonal
Isotype	IgG1 Kappa
Calculated MW	26319

**IDI1 Antibody (monoclonal) (M01) - Additional Information**

**Gene ID** 3422

**Other Names**

Isopentenyl-diphosphate Delta-isomerase 1, Isopentenyl pyrophosphate isomerase 1, IPP isomerase 1, IPPI1, IDI1

**Target/Specificity**

IDI1 (NP\_004499, 175 a.a. ~ 283 a.a) partial recombinant protein with GST tag. MW of the GST tag alone is 26 KDa.

**Dilution**

WB~~1:500~1000

**Format**

Clear, colorless solution in phosphate buffered saline, pH 7.2 .

**Storage**

Store at -20°C or lower. Aliquot to avoid repeated freezing and thawing.

**Precautions**

IDI1 Antibody (monoclonal) (M01) is for research use only and not for use in diagnostic or therapeutic procedures.

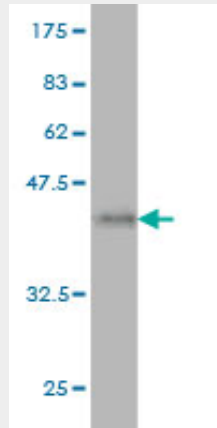
**IDI1 Antibody (monoclonal) (M01) - Protocols**

Provided below are standard protocols that you may find useful for product applications.

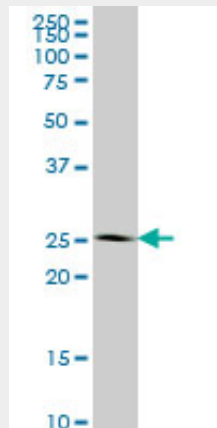
- [Western Blot](#)
- [Blocking Peptides](#)
- [Dot Blot](#)

- [Immunohistochemistry](#)
- [Immunofluorescence](#)
- [Immunoprecipitation](#)
- [Flow Cytometry](#)
- [Cell Culture](#)

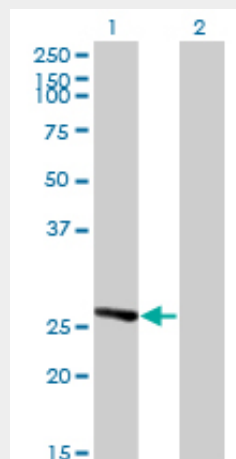
### IDI1 Antibody (monoclonal) (M01) - Images



Antibody Reactive Against Recombinant Protein. Western Blot detection against Immunogen (37.73 KDa) .

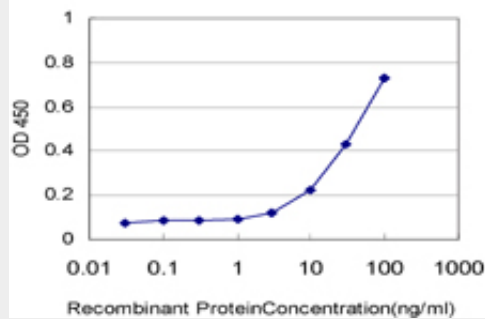


IDI1 monoclonal antibody (M01), clone 6G10 Western Blot analysis of IDI1 expression in HeLa (Cat # AT2481a )



Western Blot analysis of IDI1 expression in transfected 293T cell line by IDI1 monoclonal antibody (M01), clone 6G10.

Lane 1: IDI1 transfected lysate(26.5 KDa).  
Lane 2: Non-transfected lysate.



Detection limit for recombinant GST tagged IDI1 is approximately 1ng/ml as a capture antibody.