

ICOSLG Antibody (monoclonal) (M02)

Mouse monoclonal antibody raised against a partial recombinant ICOSLG.

Catalog # AT2471a

Specification

ICOSLG Antibody (monoclonal) (M02) - Product Information

Application	WB, E
Primary Accession	O75144
Other Accession	BC064637
Reactivity	Human
Host	mouse
Clonality	Monoclonal
Isotype	IgG1 kappa
Calculated MW	33349

ICOSLG Antibody (monoclonal) (M02) - Additional Information

Gene ID 23308

Other Names

ICOS ligand, B7 homolog 2, B7-H2, B7-like protein GI50, B7-related protein 1, B7RP-1, CD275, ICOSLG, B7H2, B7RP1, ICOSL, KIAA0653

Target/Specificity

ICOSLG (AAH64637, 20 a.a. ~ 302 a.a) partial recombinant protein with GST tag. MW of the GST tag alone is 26 KDa.

Dilution

WB~~1:500~1000

Format

Clear, colorless solution in phosphate buffered saline, pH 7.2 .

Storage

Store at -20°C or lower. Aliquot to avoid repeated freezing and thawing.

Precautions

ICOSLG Antibody (monoclonal) (M02) is for research use only and not for use in diagnostic or therapeutic procedures.

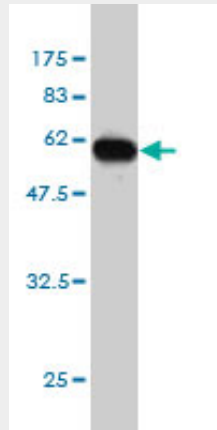
ICOSLG Antibody (monoclonal) (M02) - Protocols

Provided below are standard protocols that you may find useful for product applications.

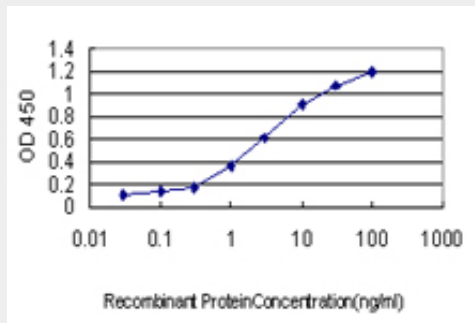
- [Western Blot](#)
- [Blocking Peptides](#)
- [Dot Blot](#)

- [Immunohistochemistry](#)
- [Immunofluorescence](#)
- [Immunoprecipitation](#)
- [Flow Cytometry](#)
- [Cell Culture](#)

ICOSLG Antibody (monoclonal) (M02) - Images



Antibody Reactive Against Recombinant Protein. Western Blot detection against Immunogen (56.87 KDa) .



Detection limit for recombinant GST tagged ICOSLG is approximately 0.1ng/ml as a capture antibody.

ICOSLG Antibody (monoclonal) (M02) - References

An approach based on a genome-wide association study reveals candidate loci for narcolepsy. Shimada M, et al. *Hum Genet*, 2010 Oct. PMID 20677014. Variation at the NFATC2 Locus Increases the Risk of Thiazolidinedione-Induced Edema in the Diabetes REduction Assessment with ramipril and rosiglitazone Medication (DREAM) Study. Bailey SD, et al. *Diabetes Care*, 2010 Jul 13. PMID 20628086. Impact of female cigarette smoking on circulating B cells in vivo: the suppressed ICOSLG, TCF3, and VCAM1 gene functional network may inhibit normal cell function. Pan F, et al. *Immunogenetics*, 2010 Apr. PMID 20217071. Multiple common variants for celiac disease influencing immune gene expression. Dubois PC, et al. *Nat Genet*, 2010 Apr. PMID 20190752. Comparative genetic analysis of inflammatory bowel disease and type 1 diabetes implicates multiple loci with opposite effects. Wang K, et al. *Hum Mol Genet*, 2010 May 15. PMID 20176734.