

**ICOSLG Antibody (monoclonal) (M02)**

Mouse monoclonal antibody raised against a partial recombinant ICOSLG.

Catalog # AT2470a

**Specification**

---

**ICOSLG Antibody (monoclonal) (M02) - Product Information**

Application	WB, E
Primary Accession	<a href="#">O75144</a>
Other Accession	<a href="#">BC064637</a>
Reactivity	Human
Host	mouse
Clonality	Monoclonal
Isotype	IgG1 kappa
Calculated MW	33349

**ICOSLG Antibody (monoclonal) (M02) - Additional Information****Gene ID** 23308**Other Names**

ICOS ligand, B7 homolog 2, B7-H2, B7-like protein GI50, B7-related protein 1, B7RP-1, CD275, ICOSLG, B7H2, B7RP1, ICOSL, KIAA0653

**Target/Specificity**

ICOSLG (AAH64637, 20 a.a. ~ 302 a.a) partial recombinant protein with GST tag. MW of the GST tag alone is 26 KDa.

**Dilution**

WB~~1:500~1000

**Format**

Clear, colorless solution in phosphate buffered saline, pH 7.2 .

**Storage**

Store at -20°C or lower. Aliquot to avoid repeated freezing and thawing.

**Precautions**

ICOSLG Antibody (monoclonal) (M02) is for research use only and not for use in diagnostic or therapeutic procedures.

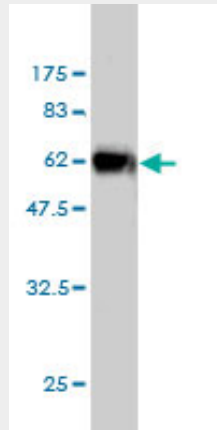
**ICOSLG Antibody (monoclonal) (M02) - Protocols**

Provided below are standard protocols that you may find useful for product applications.

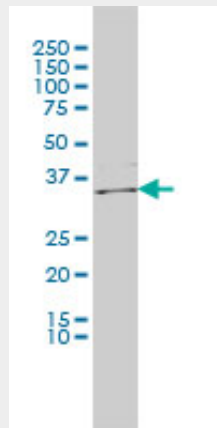
- [Western Blot](#)
- [Blocking Peptides](#)
- [Dot Blot](#)

- [Immunohistochemistry](#)
- [Immunofluorescence](#)
- [Immunoprecipitation](#)
- [Flow Cytometry](#)
- [Cell Culture](#)

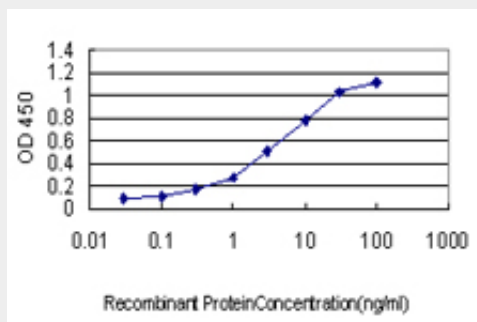
**ICOSLG Antibody (monoclonal) (M02) - Images**



Antibody Reactive Against Recombinant Protein. Western Blot detection against Immunogen (56.87 kDa) .



ICOSLG monoclonal antibody (M01), clone 2D12 Western Blot analysis of ICOSLG expression in HL-60 ( (Cat # AT2470a )



Detection limit for recombinant GST tagged ICOSLG is approximately 0.03ng/ml as a capture antibody.

**ICOSLG Antibody (monoclonal) (M02) - References**

An approach based on a genome-wide association study reveals candidate loci for narcolepsy. Shimada M, et al. Hum Genet, 2010 Oct. PMID 20677014. Variation at the NFATC2 Locus Increases the Risk of Thiazolinedione-Induced Edema in the Diabetes REduction Assessment with ramipril and rosiglitazone Medication (DREAM) Study. Bailey SD, et al. Diabetes Care, 2010 Jul 13. PMID 20628086. Impact of female cigarette smoking on circulating B cells in vivo: the suppressed ICOSLG, TCF3, and VCAM1 gene functional network may inhibit normal cell function. Pan F, et al. Immunogenetics, 2010 Apr. PMID 20217071. Multiple common variants for celiac disease influencing immune gene expression. Dubois PC, et al. Nat Genet, 2010 Apr. PMID 20190752. Comparative genetic analysis of inflammatory bowel disease and type 1 diabetes implicates multiple loci with opposite effects. Wang K, et al. Hum Mol Genet, 2010 May 15. PMID 20176734.