

HSD3B1 Antibody (monoclonal) (M01)

Mouse monoclonal antibody raised against a full length recombinant HSD3B1.

Catalog # AT2439a

Specification

HSD3B1 Antibody (monoclonal) (M01) - Product Information

Application	WB, IHC
Primary Accession	P14060
Other Accession	BC031999
Reactivity	Human
Host	mouse
Clonality	Monoclonal
Isotype	IgG1 Kappa
Calculated MW	42252

HSD3B1 Antibody (monoclonal) (M01) - Additional Information

Gene ID 3283

Other Names

3 beta-hydroxysteroid dehydrogenase/Delta 5-->4-isomerase type 1, 3 beta-hydroxysteroid dehydrogenase/Delta 5-->4-isomerase type I, 3-beta-HSD I, Trophoblast antigen FDO161G, 3-beta-hydroxy-Delta(5)-steroid dehydrogenase, 3-beta-hydroxy-5-ene steroid dehydrogenase, Progesterone reductase, Steroid Delta-isomerase, Delta-5-3-ketosteroid isomerase, HSD3B1, 3BH, HSDB3A

Target/Specificity

HSD3B1 (AAH31999.1, 1 a.a. ~ 373 a.a) full-length recombinant protein with GST tag. MW of the GST tag alone is 26 KDa.

Dilution

WB~~1:500~1000

Format

Clear, colorless solution in phosphate buffered saline, pH 7.2 .

Storage

Store at -20°C or lower. Aliquot to avoid repeated freezing and thawing.

Precautions

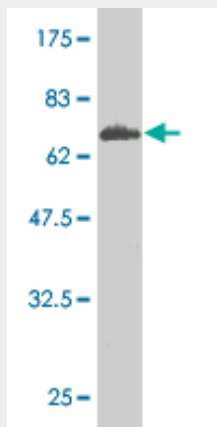
HSD3B1 Antibody (monoclonal) (M01) is for research use only and not for use in diagnostic or therapeutic procedures.

HSD3B1 Antibody (monoclonal) (M01) - Protocols

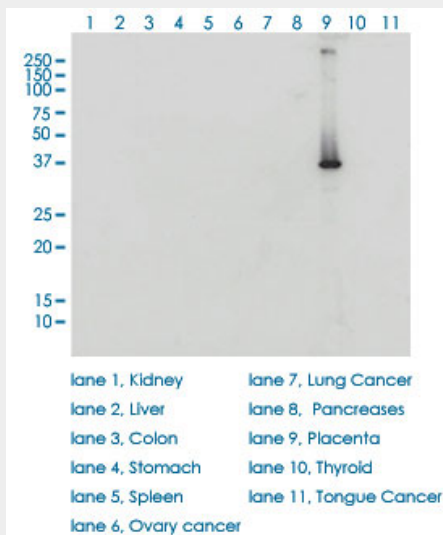
Provided below are standard protocols that you may find useful for product applications.

- [Western Blot](#)
- [Blocking Peptides](#)
- [Dot Blot](#)
- [Immunohistochemistry](#)
- [Immunofluorescence](#)
- [Immunoprecipitation](#)
- [Flow Cytometry](#)
- [Cell Culture](#)

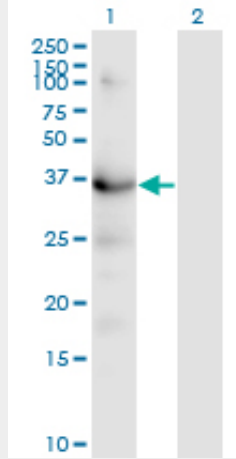
HSD3B1 Antibody (monoclonal) (M01) - Images



Antibody Reactive Against Recombinant Protein. Western Blot detection against Immunogen (66.77 KDa) .

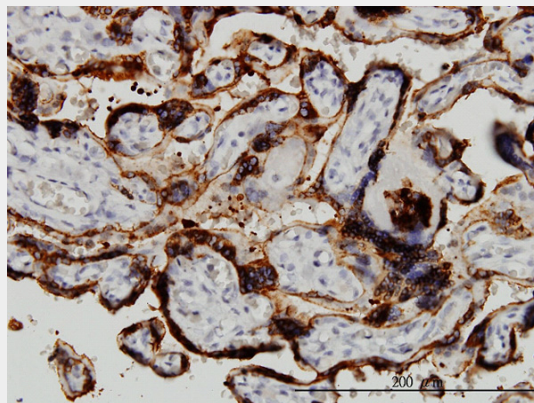


HSD3B1 monoclonal antibody (M01), clone 3C11-D4. Western Blot analysis of HSD3B1 expression in human placenta.

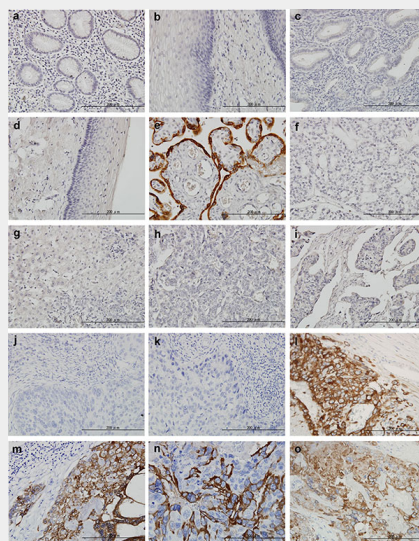


Western Blot analysis of HSD3B1 expression in transfected 293T cell line by HSD3B1 monoclonal antibody (M01), clone 3C11-D4.

Lane 1: HSD3B1 transfected lysate (Predicted MW: 42.3 KDa).
Lane 2: Non-transfected lysate.



Immunoperoxidase of monoclonal antibody to HSD3B1 on formalin-fixed paraffin-embedded human placenta. [antibody concentration 3 ug/ml]



Immunohistochemical staining of various tissues with hematoxylin and HSD3B1 antibody under high magnification. [antibody concentration 3 ug/ml]

- (a) Stomach
- (b) Esophagus
- (c) Endometrium
- (d) Uterine cervix
- (e) Placenta
- (f) Ovary, clear cell carcinoma
- (g) Hepatocellular carcinoma
- (h) Breast cancer
- (i) Colon adenocarcinoma
- (j and k) Cervical carcinoma
- (l, m, and n) Choriocarcinoma
- (o) Epithelioid trophoblastic tumor.

HSD3B1 Antibody (monoclonal) (M01) - References

1. Gestational Trophoblastic Tumors and Related Tumor-Like Lesions. Shih IM, Mazur MT, Kurman RJ. *Blaustein's Pathology of the Female Genital Tract* 2011, 1075-1135, DOI: 10.1007/978-1-4419-0489-8_202. Advances in the diagnosis of gestational trophoblastic tumors and tumor-like lesions. Mao TL, Shih IM. *Expert Opin. Med. Diagn.* (2009) 3(4):371-3803. Chorangiocarcinoma: A Case Report and Review of the Literature. Ariel I, Boldes R, Weintraub A, Reinus C, Beller U, Arbel R. *Int J Gynecol Pathol.* 2009 May;28(3):267-71. 4. HSD3B1 as a novel trophoblast-associated marker that assists in the differential diagnosis of trophoblastic tumors and tumorlike lesions. Mao TL, Kurman RJ, Jeng YM, Huang W, Shih IM. *Am J Surg Pathol.* 2008 Feb;32(2):236-42. 5. Trophogram, an immunohistochemistry-based algorithmic approach, in the differential diagnosis of trophoblastic tumors and tumorlike lesions. Shih IM. *Ann Diagn Pathol.* 2007 Jun;11(3):228-34.