

HMOX2 Antibody (monoclonal) (M01)

Mouse monoclonal antibody raised against a full length recombinant HMOX2.

Catalog # AT2390a

Specification

HMOX2 Antibody (monoclonal) (M01) - Product Information

Application	IF, WB, E
Primary Accession	P30519
Other Accession	BC002396
Reactivity	Human
Host	mouse
Clonality	Monoclonal
Isotype	IgG1 kappa
Calculated MW	36033

HMOX2 Antibody (monoclonal) (M01) - Additional Information**Gene ID** 3163**Other Names**

Heme oxygenase 2, HO-2, HMOX2, HO2

Target/Specificity

HMOX2 (AAH02396, 1 a.a. ~ 316 a.a) full-length recombinant protein with GST tag. MW of the GST tag alone is 26 KDa.

Dilution

WB~~1:500~1000

Format

Clear, colorless solution in phosphate buffered saline, pH 7.2 .

Storage

Store at -20°C or lower. Aliquot to avoid repeated freezing and thawing.

Precautions

HMOX2 Antibody (monoclonal) (M01) is for research use only and not for use in diagnostic or therapeutic procedures.

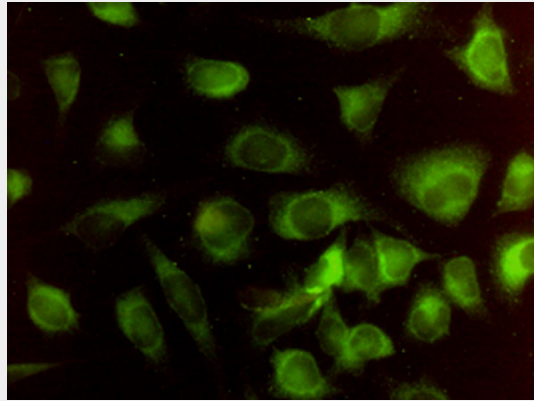
HMOX2 Antibody (monoclonal) (M01) - Protocols

Provided below are standard protocols that you may find useful for product applications.

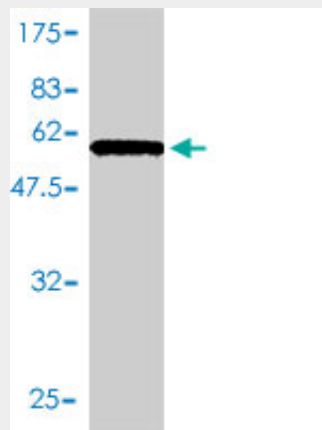
- [Western Blot](#)
- [Blocking Peptides](#)
- [Dot Blot](#)
- [Immunohistochemistry](#)

- [Immunofluorescence](#)
- [Immunoprecipitation](#)
- [Flow Cytometry](#)
- [Cell Culture](#)

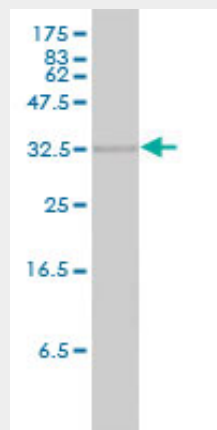
HMOX2 Antibody (monoclonal) (M01) - Images



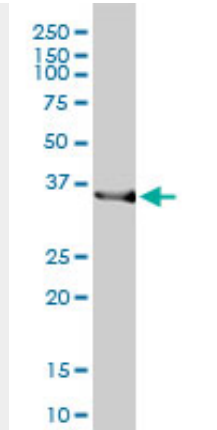
Immunofluorescence of monoclonal antibody to HMOX2 on HeLa cell. [antibody concentration ~ 10 ug/ml]



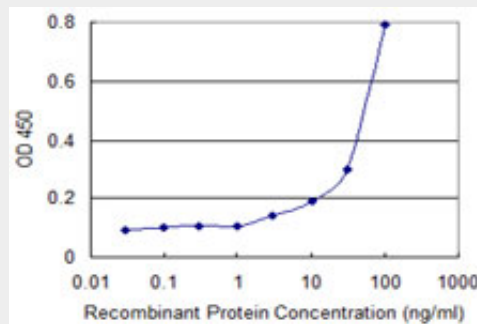
Antibody Reactive Against Recombinant Protein. Western Blot detection against Immunogen (60.5 KDa) .



HMOX2 monoclonal antibody (M01), clone 1D8-1A8. Western Blot analysis of HMOX2 expression in human spleen.



HMOX2 monoclonal antibody (M01), clone 1D8-1A8 Western Blot analysis of HMOX2 expression in HepG2 ((Cat # AT2390a)



Detection limit for recombinant GST tagged HMOX2 is 1 ng/ml as a capture antibody.

HMOX2 Antibody (monoclonal) (M01) - Background

Heme oxygenase, an essential enzyme in heme catabolism, cleaves heme to form biliverdin, which is subsequently converted to bilirubin by biliverdin reductase, and carbon monoxide, a putative neurotransmitter. Heme oxygenase activity is induced by its substrate heme and by various nonheme substances. Heme oxygenase occurs as 2 isozymes, an inducible heme oxygenase-1 and a constitutive heme oxygenase-2. HMOX1 and HMOX2 belong to the heme oxygenase family. Alternative splice variants encoding the same protein have been identified at this locus.

HMOX2 Antibody (monoclonal) (M01) - References

Common polymorphisms in ITGA2, PON1 and THBS2 are associated with coronary atherosclerosis in a candidate gene association study of the Chinese Han population. Wang Y, et al. *J Hum Genet*, 2010 Aug. PMID 20485444. Enhanced translation of heme oxygenase-2 preserves human endothelial cell viability during hypoxia. He JZ, et al. *J Biol Chem*, 2010 Mar 26. PMID 20118244. Association of an intronic variant of the heme oxygenase-1 gene with hypertension in northern Chinese Han population. Yun L, et al. *Clin Exp Hypertens*, 2009 Oct. PMID 19886851. A role for Bach1 and HO-2 in suppression of basal and UVA-induced HO-1 expression in human keratinocytes. Zhong JL, et al. *Free Radic Biol Med*, 2010 Jan 15. PMID 19874887. Defining the human deubiquitinating enzyme interaction landscape. Sowa ME, et al. *Cell*, 2009 Jul 23. PMID 19615732.