

**HBB Antibody (monoclonal) (M02)**

Mouse monoclonal antibody raised against a partial recombinant HBB.

Catalog # AT2322a

**Specification**

---

**HBB Antibody (monoclonal) (M02) - Product Information**

Application	WB, IHC, E
Primary Accession	<a href="#">P68871</a>
Other Accession	<a href="#">BC007075</a>
Reactivity	Human
Host	mouse
Clonality	Monoclonal
Isotype	IgG1 Kappa
Calculated MW	15998

**HBB Antibody (monoclonal) (M02) - Additional Information****Gene ID** 3043**Other Names**

Hemoglobin subunit beta, Beta-globin, Hemoglobin beta chain, LVV-hemorphin-7, Spinorphin, HBB

**Target/Specificity**

HBB (AAH07075, 38 a.a. ~ 147 a.a) partial recombinant protein with GST tag. MW of the GST tag alone is 26 KDa.

**Dilution**

WB~~1:500~1000

**Format**

Clear, colorless solution in phosphate buffered saline, pH 7.2 .

**Storage**

Store at -20°C or lower. Aliquot to avoid repeated freezing and thawing.

**Precautions**

HBB Antibody (monoclonal) (M02) is for research use only and not for use in diagnostic or therapeutic procedures.

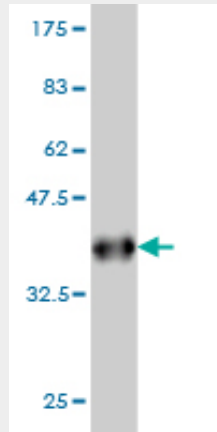
**HBB Antibody (monoclonal) (M02) - Protocols**

Provided below are standard protocols that you may find useful for product applications.

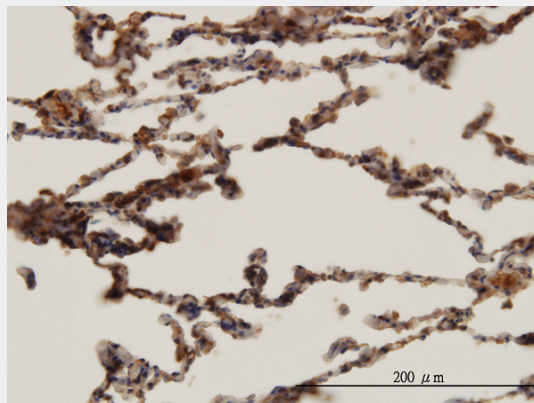
- [Western Blot](#)
- [Blocking Peptides](#)
- [Dot Blot](#)
- [Immunohistochemistry](#)

- [Immunofluorescence](#)
- [Immunoprecipitation](#)
- [Flow Cytometry](#)
- [Cell Culture](#)

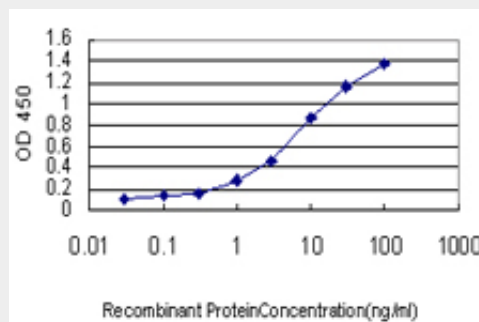
### HBB Antibody (monoclonal) (M02) - Images



Antibody Reactive Against Recombinant Protein. Western Blot detection against Immunogen (37.84 KDa) .



Immunoperoxidase of monoclonal antibody to HBB on formalin-fixed paraffin-embedded human lung. [antibody concentration 3 ug/ml]



Detection limit for recombinant GST tagged HBB is approximately 0.1ng/ml as a capture antibody.

### HBB Antibody (monoclonal) (M02) - Background

The alpha (HBA) and beta (HBB) loci determine the structure of the 2 types of polypeptide chains in

adult hemoglobin, Hb A. The normal adult hemoglobin tetramer consists of two alpha chains and two beta chains. Mutant beta globin causes sickle cell anemia. Absence of beta chain causes beta-zero-thalassemia. Reduced amounts of detectable beta globin causes beta-plus-thalassemia. The order of the genes in the beta-globin cluster is 5'-epsilon -- gamma-G -- gamma-A -- delta -- beta--3'.

### **HBB Antibody (monoclonal) (M02) - References**

1.A Synthetic Model of Human Beta-Thalassemia Erythropoiesis Using CD34+ Cells from Healthy Adult Donors.Lee YT, Kim KS, Byrnes C, de Vasconcellos JF, Noh SJ, Rabel A, Meier ER, Miller JLPLoS One. 2013 Jul 8;8(7):e68307. doi: 10.1371/journal.pone.0068307. Print 2013.2.Hemoglobin alpha and beta are ubiquitous in the human lung, decline in idiopathic pulmonary fibrosis but not in COPD.Ishikawa N, Ohlmeier S, Salmenkivi K, Myllarniemi M, Rahman I, Mazur W, Kinnula VL.Respir Res. 2010 Sep 13;11:123.