

HBB Antibody (monoclonal) (M01)

Mouse monoclonal antibody raised against a partial recombinant HBB.

Catalog # AT2321a

Specification

HBB Antibody (monoclonal) (M01) - Product Information

Application	WB, E
Primary Accession	P68871
Other Accession	BC007075
Reactivity	Human
Host	mouse
Clonality	Monoclonal
Isotype	IgG3 Kappa
Calculated MW	15998

HBB Antibody (monoclonal) (M01) - Additional Information

Gene ID 3043

Other Names

Hemoglobin subunit beta, Beta-globin, Hemoglobin beta chain, LVV-hemorphin-7, Spinorphin, HBB

Target/Specificity

HBB (AAH07075, 38 a.a. ~ 147 a.a) partial recombinant protein with GST tag. MW of the GST tag alone is 26 KDa.

Dilution

WB~~1:500~1000

Format

Clear, colorless solution in phosphate buffered saline, pH 7.2 .

Storage

Store at -20°C or lower. Aliquot to avoid repeated freezing and thawing.

Precautions

HBB Antibody (monoclonal) (M01) is for research use only and not for use in diagnostic or therapeutic procedures.

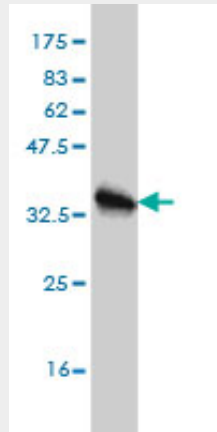
HBB Antibody (monoclonal) (M01) - Protocols

Provided below are standard protocols that you may find useful for product applications.

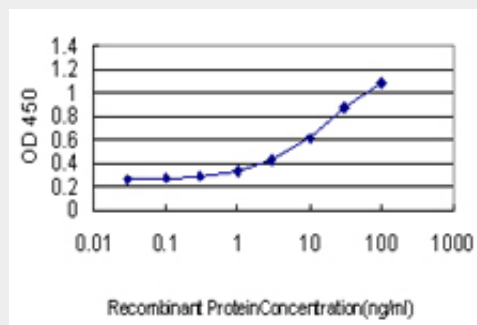
- [Western Blot](#)
- [Blocking Peptides](#)
- [Dot Blot](#)
- [Immunohistochemistry](#)

- [Immunofluorescence](#)
- [Immunoprecipitation](#)
- [Flow Cytometry](#)
- [Cell Culture](#)

HBB Antibody (monoclonal) (M01) - Images



Antibody Reactive Against Recombinant Protein. Western Blot detection against Immunogen (37.84 KDa) .



Detection limit for recombinant GST tagged HBB is approximately 0.3ng/ml as a capture antibody.

HBB Antibody (monoclonal) (M01) - Background

The alpha (HBA) and beta (HBB) loci determine the structure of the 2 types of polypeptide chains in adult hemoglobin, Hb A. The normal adult hemoglobin tetramer consists of two alpha chains and two beta chains. Mutant beta globin causes sickle cell anemia. Absence of beta chain causes beta-zero-thalassemia. Reduced amounts of detectable beta globin causes beta-plus-thalassemia. The order of the genes in the beta-globin cluster is 5'-epsilon -- gamma-G -- gamma-A -- delta -- beta--3'.

HBB Antibody (monoclonal) (M01) - References

1. A novel transgenic mouse model produced from lentiviral germline integration for the study of beta-thalassemia gene therapy. Li W, Xie S, Guo X, Gong X, Wang S, Lin D, Zhang J, Ren Z, Huang S, Zeng F, Zeng Y. *Haematologica*. 2008 Mar;93(3):356-62. Epub 2008 Feb 11.
2. Restoration of the balanced {alpha}/{beta}-globin gene expression in {beta}654-thalassemia mice using combined RNAi and antisense RNA approach. Xie SY, Ren ZR, Zhang JZ, Guo XB, Wang QX, Wang S, Lin D, Gong XL, Li W, Huang SZ, Zeng F, Zeng YT. *Hum Mol Genet*. 2007 Nov 1;16(21):2616-25. Epub 2007 Aug 22.