

GTF2H1 Antibody (monoclonal) (M01)**Mouse monoclonal antibody raised against a full length recombinant GTF2H1.****Catalog # AT2287a****Specification**

GTF2H1 Antibody (monoclonal) (M01) - Product Information

Application	IF, WB, IHC, E
Primary Accession	P32780
Other Accession	BC000365
Reactivity	Human
Host	mouse
Clonality	Monoclonal
Isotype	IgG1 kappa
Calculated MW	62032

GTF2H1 Antibody (monoclonal) (M01) - Additional Information**Gene ID** 2965**Other Names**

General transcription factor IIH subunit 1, Basic transcription factor 2 62 kDa subunit, BTF2 p62, General transcription factor IIH polypeptide 1, TFIID basal transcription factor complex p62 subunit, GTF2H1, BTF2

Target/Specificity

GTF2H1 (AAH00365, 1 a.a. ~ 548 a.a) full-length recombinant protein with GST tag. MW of the GST tag alone is 26 KDa.

Dilution

WB~~1:500~1000

Format

Clear, colorless solution in phosphate buffered saline, pH 7.2 .

Storage

Store at -20°C or lower. Aliquot to avoid repeated freezing and thawing.

Precautions

GTF2H1 Antibody (monoclonal) (M01) is for research use only and not for use in diagnostic or therapeutic procedures.

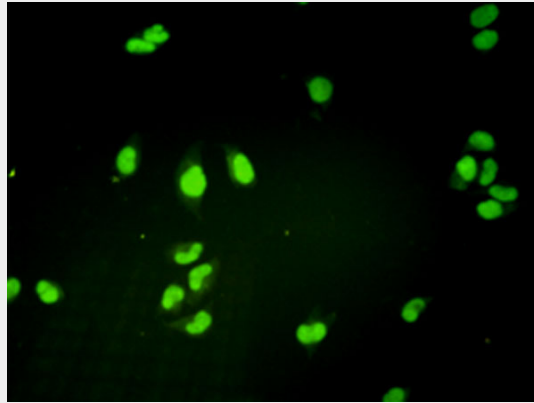
GTF2H1 Antibody (monoclonal) (M01) - Protocols

Provided below are standard protocols that you may find useful for product applications.

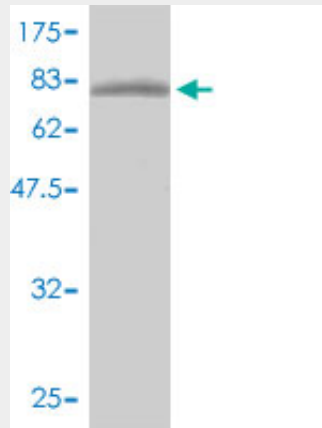
- [Western Blot](#)
- [Blocking Peptides](#)

- [Dot Blot](#)
- [Immunohistochemistry](#)
- [Immunofluorescence](#)
- [Immunoprecipitation](#)
- [Flow Cytometry](#)
- [Cell Culture](#)

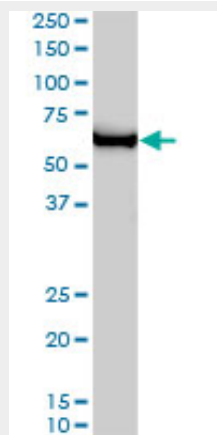
GTF2H1 Antibody (monoclonal) (M01) - Images



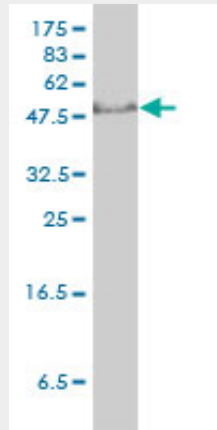
Immunofluorescence of monoclonal antibody to GTF2H1 on HeLa cell. [antibody concentration 10 ug/ml]



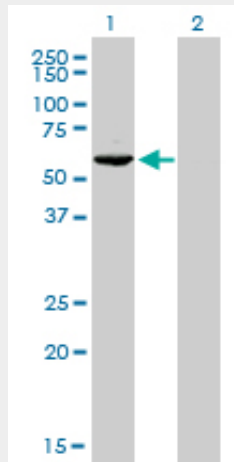
Antibody Reactive Against Recombinant Protein. Western Blot detection against Immunogen (86.02 KDa) .



GTF2H1 monoclonal antibody (M01), clone 1F12-1B5. Western Blot analysis of GTF2H1 expression in HeLa S3 NE (Cat # AT2287a)

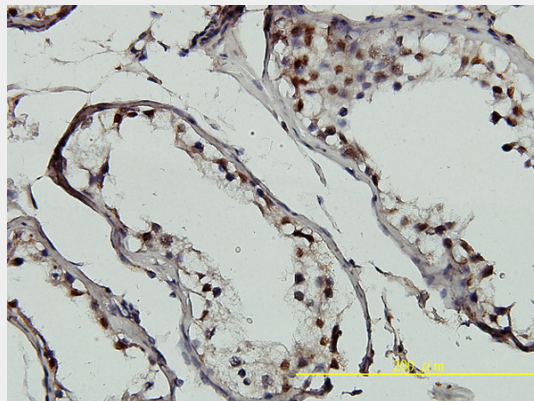


GTF2H1 monoclonal antibody (M01), clone 1F12-1B5 Western Blot analysis of GTF2H1 expression in Jurkat (Cat # AT2287a)

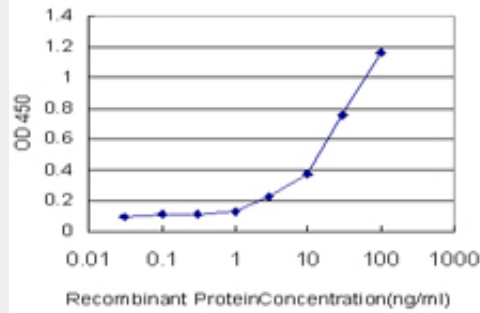


Western Blot analysis of GTF2H1 expression in transfected 293T cell line by GTF2H1 monoclonal antibody (M01), clone 1F12-1B5.

Lane 1: GTF2H1 transfected lysate(62 KDa).
Lane 2: Non-transfected lysate.



Immunoperoxidase of monoclonal antibody to GTF2H1 on formalin-fixed paraffin-embedded human testis tissue.[antibody concentration 5 ug/ml]



Detection limit for recombinant GST tagged GTF2H1 is approximately 1ng/ml as a capture antibody.

GTF2H1 Antibody (monoclonal) (M01) - References

1.XPB induces C1D expression to counteract UV-induced apoptosis.Li G, Liu J, Abu-Asab M, Masabumi S, Maru Y.Mol Cancer Res. 2010 Jun;8(6):885-95. Epub 2010 Jun 8.