

GTF2A1 Antibody (monoclonal) (M01)

Mouse monoclonal antibody raised against a partial recombinant GTF2A1.

Catalog # AT2285a

Specification

GTF2A1 Antibody (monoclonal) (M01) - Product Information

Application	WB, E
Primary Accession	P52655
Other Accession	NM_015859
Reactivity	Human
Host	mouse
Clonality	Monoclonal
Isotype	IgG1 Kappa
Calculated MW	41514

GTF2A1 Antibody (monoclonal) (M01) - Additional Information

Gene ID 2957

Other Names

Transcription initiation factor IIA subunit 1, General transcription factor IIA subunit 1, TFIIAL, Transcription initiation factor TFIIA 42 kDa subunit, TFIIA-42, Transcription initiation factor IIA alpha chain, TFIIA p35 subunit, Transcription initiation factor IIA beta chain, TFIIA p19 subunit, GTF2A1, TF2A1

Target/Specificity

GTF2A1 (NP_056943, 1 a.a. ~ 63 a.a) partial recombinant protein with GST tag. MW of the GST tag alone is 26 kDa.

Dilution

WB ~ 1:500 ~ 1000

Format

Clear, colorless solution in phosphate buffered saline, pH 7.2 .

Storage

Store at -20°C or lower. Aliquot to avoid repeated freezing and thawing.

Precautions

GTF2A1 Antibody (monoclonal) (M01) is for research use only and not for use in diagnostic or therapeutic procedures.

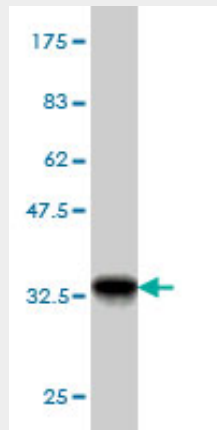
GTF2A1 Antibody (monoclonal) (M01) - Protocols

Provided below are standard protocols that you may find useful for product applications.

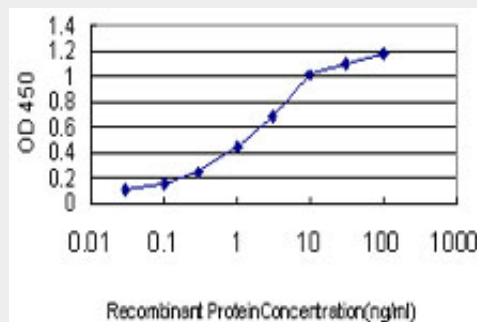
- [Western Blot](#)

- [Blocking Peptides](#)
- [Dot Blot](#)
- [Immunohistochemistry](#)
- [Immunofluorescence](#)
- [Immunoprecipitation](#)
- [Flow Cytometry](#)
- [Cell Culture](#)

GTF2A1 Antibody (monoclonal) (M01) - Images



Antibody Reactive Against Recombinant Protein. Western Blot detection against Immunogen (32.67 KDa) .



Detection limit for recombinant GST tagged GTF2A1 is approximately 0.03ng/ml as a capture antibody.

GTF2A1 Antibody (monoclonal) (M01) - Background

Accurate transcription initiation on TATA-containing class II genes involves the ordered assembly of RNA polymerase II (POLR2A; MIM 180660) and several general initiation factors (summarized by DeJong and Roeder, 1993 [PubMed 8224848]). One of these factors is TFIIA, which when purified from HeLa extracts consists of 35-, 19-, and 12-kD subunits.

GTF2A1 Antibody (monoclonal) (M01) - References

Identification of candidate epigenetic biomarkers for ovarian cancer detection. Huang YW, et al. *Oncol Rep*, 2009 Oct. PMID 19724865. Evaluating new candidate SNPs as low penetrance risk factors in sporadic breast cancer: a two-stage Spanish case-control study. Vega A, et al. *Gynecol Oncol*, 2009 Jan. PMID 18950845. Toward a confocal subcellular atlas of the human proteome. Barbe L, et al. *Mol Cell Proteomics*, 2008 Mar. PMID 18029348. TFIIA changes the conformation of the DNA in TBP/TATA complexes and increases their kinetic stability. Hieb AR, et al. *J Mol Biol*, 2007 Sep 21. PMID 17681538. Systematic analysis of the protein interaction network for the human transcription

machinery reveals the identity of the 7SK capping enzyme. Jeronimo C, et al. Mol Cell, 2007 Jul 20. PMID 17643375.