

## **GSDML Antibody (monoclonal) (M06)**

Mouse monoclonal antibody raised against a full length recombinant GSDML.

Catalog # AT2271a

### **Specification**

---

#### **GSDML Antibody (monoclonal) (M06) - Product Information**

Application	WB, E
Primary Accession	<a href="#">O8TAX9</a>
Other Accession	<a href="#">BC025682</a>
Reactivity	Human
Host	mouse
Clonality	Monoclonal
Isotype	IgG2b Kappa
Calculated MW	47348

#### **GSDML Antibody (monoclonal) (M06) - Additional Information**

**Gene ID** 55876

##### **Other Names**

Gasdermin-B, Gasdermin-like protein, GSDMB, GSDML

##### **Target/Specificity**

GSDML (AAH25682, 1 a.a. ~ 411 a.a) full-length recombinant protein with GST tag. MW of the GST tag alone is 26 KDa.

##### **Dilution**

WB~~1:500~1000

##### **Format**

Clear, colorless solution in phosphate buffered saline, pH 7.2 .

##### **Storage**

Store at -20°C or lower. Aliquot to avoid repeated freezing and thawing.

##### **Precautions**

GSDML Antibody (monoclonal) (M06) is for research use only and not for use in diagnostic or therapeutic procedures.

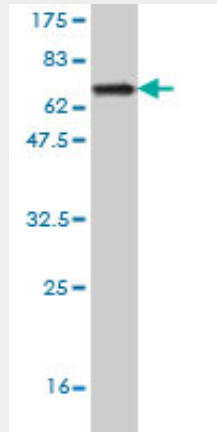
#### **GSDML Antibody (monoclonal) (M06) - Protocols**

Provided below are standard protocols that you may find useful for product applications.

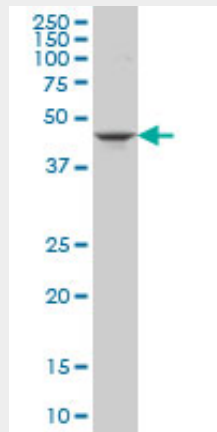
- [Western Blot](#)
- [Blocking Peptides](#)
- [Dot Blot](#)
- [Immunohistochemistry](#)

- [Immunofluorescence](#)
- [Immunoprecipitation](#)
- [Flow Cytometry](#)
- [Cell Culture](#)

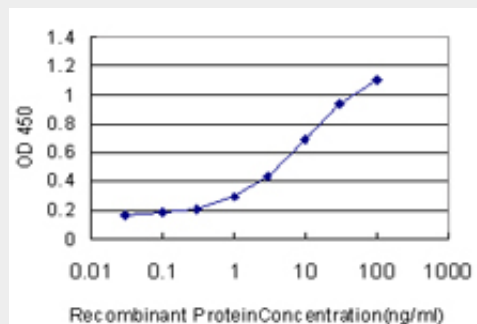
**GSDML Antibody (monoclonal) (M06) - Images**



Antibody Reactive Against Recombinant Protein. Western Blot detection against Immunogen (70.95 kDa) .



GSDML monoclonal antibody (M06), clone 4C10 Western Blot analysis of GSDML expression in Jurkat ( (Cat # AT2271a )



Detection limit for recombinant GST tagged GSDML is approximately 0.3ng/ml as a capture antibody.

**GSDML Antibody (monoclonal) (M06) - Background**

This gene encodes a member of the gasdermin-domain containing protein family. Other gasdermin-family genes are implicated in the regulation of apoptosis in epithelial cells, and are linked to cancer. Multiple transcript variants encoding different isoforms have been found for this gene. Additional variants have been described, but they are candidates for nonsense-mediated mRNA decay (NMD) and are unlikely to be protein-coding.

### **GSDML Antibody (monoclonal) (M06) - References**

Analysis of SNPs with an effect on gene expression identifies UBE2L3 and BCL3 as potential new risk genes for Crohn's disease. Fransen K, et al. Hum Mol Genet, 2010 Sep 1. PMID 20601676. In silico replication of the genome-wide association results of the Type 1 Diabetes Genetics Consortium. Qu HQ, et al. Hum Mol Genet, 2010 Jun 15. PMID 20378605. Allele-specific chromatin remodeling in the ZBP2/GSDMB/ORMDL3 locus associated with the risk of asthma and autoimmune disease. Verlaan DJ, et al. Am J Hum Genet, 2009 Sep. PMID 19732864. Genome-wide association study and meta-analysis find that over 40 loci affect risk of type 1 diabetes. Barrett JC, et al. Nat Genet, 2009 Jun. PMID 19430480. Genetic variation in ORM1-like 3 (ORMDL3) and gasdermin-like (GSDML) and childhood asthma. Wu H, et al. Allergy, 2009 Apr. PMID 19133921.