

**GRAP2 Antibody (monoclonal) (M01)**

Mouse monoclonal antibody raised against a partial recombinant GRAP2.

Catalog # AT2256a

**Specification**

---

**GRAP2 Antibody (monoclonal) (M01) - Product Information**

Application	IP, WB, IHC, E
Primary Accession	<a href="#">O75791</a>
Other Accession	<a href="#">BC025692</a>
Reactivity	Human
Host	mouse
Clonality	Monoclonal
Isotype	IgG2a Kappa
Calculated MW	37909

**GRAP2 Antibody (monoclonal) (M01) - Additional Information**

Gene ID 9402

**Other Names**

GRB2-related adapter protein 2, Adapter protein GRID, GRB-2-like protein, GRB2L, GRBLG, GRBX, Grf40 adapter protein, Grf-40, Growth factor receptor-binding protein, Hematopoietic cell-associated adapter protein GrpL, P38, Protein GADS, SH3-SH2-SH3 adapter Mona, GRAP2, GADS, GRB2L, GRID

**Target/Specificity**

GRAP2 (AAH25692, 226 a.a. ~ 315 a.a) partial recombinant protein with GST tag. MW of the GST tag alone is 26 KDa.

**Dilution**

WB~~1:500~1000

**Format**

Clear, colorless solution in phosphate buffered saline, pH 7.2 .

**Storage**

Store at -20°C or lower. Aliquot to avoid repeated freezing and thawing.

**Precautions**

GRAP2 Antibody (monoclonal) (M01) is for research use only and not for use in diagnostic or therapeutic procedures.

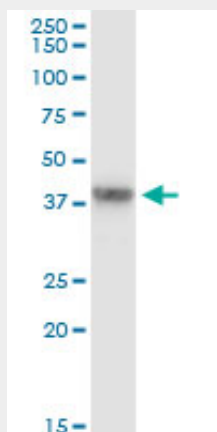
**GRAP2 Antibody (monoclonal) (M01) - Protocols**

Provided below are standard protocols that you may find useful for product applications.

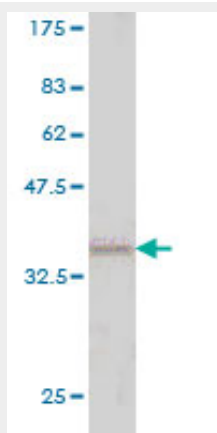
- [Western Blot](#)

- [Blocking Peptides](#)
- [Dot Blot](#)
- [Immunohistochemistry](#)
- [Immunofluorescence](#)
- [Immunoprecipitation](#)
- [Flow Cytometry](#)
- [Cell Culture](#)

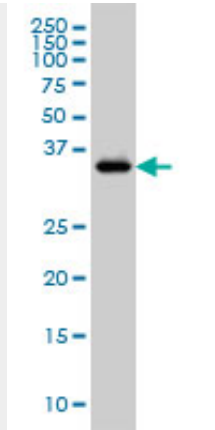
### GRAP2 Antibody (monoclonal) (M01) - Images



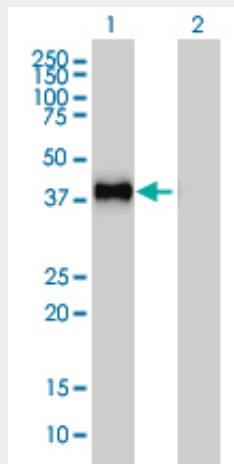
Immunoprecipitation of GRAP2 transfected lysate using anti-GRAP2 monoclonal antibody and Protein A Magnetic Bead ([U0007](#)), and immunoblotted with GRAP2 monoclonal antibody.



Antibody Reactive Against Recombinant Protein. Western Blot detection against Immunogen (35.64 KDa) .

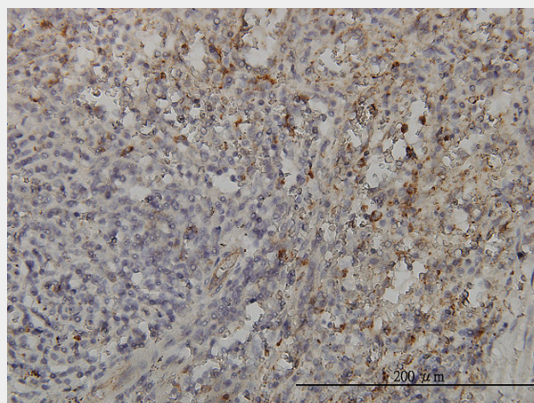


GRAP2 monoclonal antibody (M01), clone 1G12 Western Blot analysis of GRAP2 expression in Jurkat ( Cat # AT2256a )

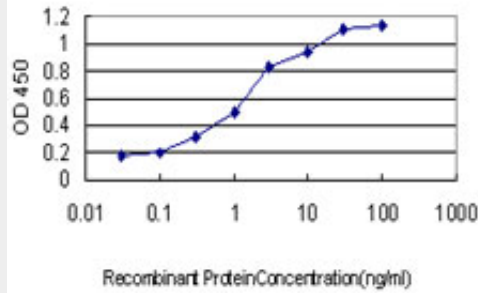


Western Blot analysis of GRAP2 expression in transfected 293T cell line by GRAP2 monoclonal antibody (M01), clone 1G12.

Lane 1: GRAP2 transfected lysate(38 KDa).  
Lane 2: Non-transfected lysate.



Immunoperoxidase of monoclonal antibody to GRAP2 on formalin-fixed paraffin-embedded human spleen. [antibody concentration 3 ug/ml]



Detection limit for recombinant GST tagged GRAP2 is approximately 0.03ng/ml as a capture antibody.

### **GRAP2 Antibody (monoclonal) (M01) - Background**

This gene encodes a member of the GRB2/Sem5/Drk family. This member is an adaptor-like protein involved in leukocyte-specific protein-tyrosine kinase signaling. Like its related family member, GRB2-related adaptor protein (GRAP), this protein contains an SH2 domain flanked by two SH3 domains. This protein interacts with other proteins, such as GRB2-associated binding protein 1 (GAB1) and the SLP-76 leukocyte protein (LCP2), through its SH3 domains. Transcript variants utilizing alternative polyA sites exist.

### **GRAP2 Antibody (monoclonal) (M01) - References**

Personalized smoking cessation: interactions between nicotine dose, dependence and quit-success genotype score. Rose JE, et al. Mol Med, 2010 Jul-Aug. PMID 20379614. New genetic associations detected in a host response study to hepatitis B vaccine. Davila S, et al. Genes Immun, 2010 Apr. PMID 20237496. The Bcr-Abl kinase regulates the actin cytoskeleton via a GADS/Slp-76/Nck1 adaptor protein pathway. Preisinger C, et al. Cell Signal, 2010 May. PMID 20079431. Secreted protein acidic and rich in cysteine (SPARC) gene polymorphism association with hepatocellular carcinoma in Italian patients. Segat L, et al. J Gastroenterol Hepatol, 2009 Dec. PMID 19817957. Expression of the Grb2-related RET adapter protein Grap-2 in human medullary thyroid carcinoma. Ludwig L, et al. Cancer Lett, 2009 Mar 18. PMID 19027225.