

GPD1 Antibody (monoclonal) (M01)

Mouse monoclonal antibody raised against a full length recombinant GPD1.

Catalog # AT2242a

Specification

GPD1 Antibody (monoclonal) (M01) - Product Information

Application	WB, E
Primary Accession	P21695
Other Accession	BC032234
Reactivity	Human
Host	mouse
Clonality	Monoclonal
Isotype	IgG1 Kappa
Calculated MW	37568

GPD1 Antibody (monoclonal) (M01) - Additional Information**Gene ID** 2819**Other Names**

Glycerol-3-phosphate dehydrogenase [NAD(+)], cytoplasmic, GPD-C, GPDH-C, GPD1

Target/Specificity

GPD1 (AAH32234, 1 a.a. ~ 349 a.a) full-length recombinant protein with GST tag. MW of the GST tag alone is 26 KDa.

Dilution

WB~~1:500~1000

Format

Clear, colorless solution in phosphate buffered saline, pH 7.2 .

Storage

Store at -20°C or lower. Aliquot to avoid repeated freezing and thawing.

Precautions

GPD1 Antibody (monoclonal) (M01) is for research use only and not for use in diagnostic or therapeutic procedures.

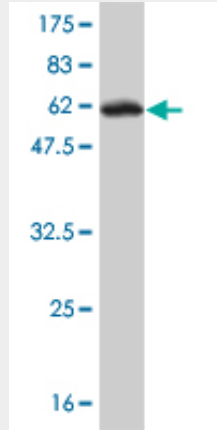
GPD1 Antibody (monoclonal) (M01) - Protocols

Provided below are standard protocols that you may find useful for product applications.

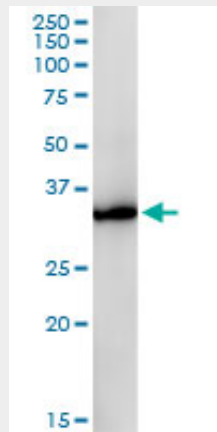
- [Western Blot](#)
- [Blocking Peptides](#)
- [Dot Blot](#)
- [Immunohistochemistry](#)

- [Immunofluorescence](#)
- [Immunoprecipitation](#)
- [Flow Cytometry](#)
- [Cell Culture](#)

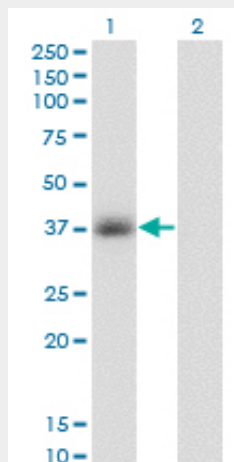
GPD1 Antibody (monoclonal) (M01) - Images



Antibody Reactive Against Recombinant Protein. Western Blot detection against Immunogen (64.13 KDa) .

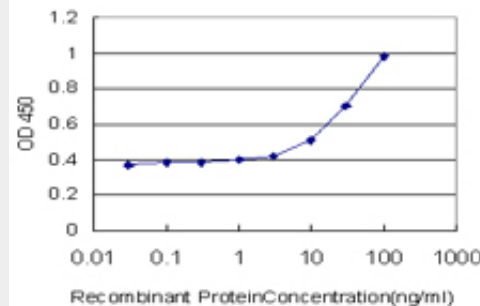


GPD1 monoclonal antibody (M01), clone 3C10-1C4. Western Blot analysis of GPD1 expression in human kidney.



Western Blot analysis of GPD1 expression in transfected 293T cell line by GPD1 monoclonal antibody (M01), clone 3C10-1C4.

Lane 1: GPD1 transfected lysate (Predicted MW: 37.6 KDa).
Lane 2: Non-transfected lysate.



Detection limit for recombinant GST tagged GPD1 is approximately 1ng/ml as a capture antibody.

GPD1 Antibody (monoclonal) (M01) - References

The influence of obstructive sleep apnea on the expression of glycerol-3-phosphate dehydrogenase 1 gene. Guindalini C, et al. *Exp Biol Med* (Maywood), 2010 Jan. PMID 20404019. [Colorectal cancer 2D-proteomics: identification of altered protein expression] Krasnov GS, et al. *Mol Biol (Mosk)*, 2009 Mar-Apr. PMID 19425502. Decreased levels of metabolic enzymes in pancreatic islets of patients with type 2 diabetes. MacDonald MJ, et al. *Diabetologia*, 2009 Jun. PMID 19296078. GRB14, GPD1, and GDF8 as potential network collaborators in weight loss-induced improvements in insulin action in human skeletal muscle. Park JJ, et al. *Physiol Genomics*, 2006 Oct 11. PMID 16849634. Crystal structures of human glycerol 3-phosphate dehydrogenase 1 (GPD1). Ou X, et al. *J Mol Biol*, 2006 Mar 31. PMID 16460752.