

## **GMPPA Antibody (monoclonal) (M01)**

Mouse monoclonal antibody raised against a partial recombinant GMPPA.

Catalog # AT2221a

### **Specification**

---

#### **GMPPA Antibody (monoclonal) (M01) - Product Information**

Application	IP, WB
Primary Accession	<a href="#">O96IJ6</a>
Other Accession	<a href="#">NM_013335</a>
Reactivity	Human
Host	mouse
Clonality	Monoclonal
Isotype	IgG2a Kappa
Calculated MW	46291

#### **GMPPA Antibody (monoclonal) (M01) - Additional Information**

**Gene ID** 29926

##### **Other Names**

Mannose-1-phosphate guanyltransferase alpha, GDP-mannose pyrophosphorylase A, GMPP-alpha, GTP-mannose-1-phosphate guanylyltransferase alpha, GMPPA

##### **Target/Specificity**

GMPPA (NP\_037467, 321 a.a. ~ 420 a.a) partial recombinant protein with GST tag. MW of the GST tag alone is 26 KDa.

##### **Dilution**

WB~~1:500~1000

##### **Format**

Clear, colorless solution in phosphate buffered saline, pH 7.2 .

##### **Storage**

Store at -20°C or lower. Aliquot to avoid repeated freezing and thawing.

##### **Precautions**

GMPPA Antibody (monoclonal) (M01) is for research use only and not for use in diagnostic or therapeutic procedures.

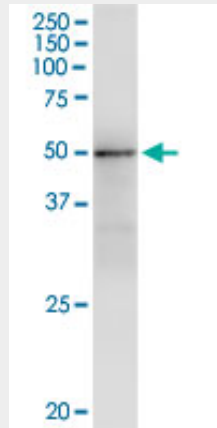
#### **GMPPA Antibody (monoclonal) (M01) - Protocols**

Provided below are standard protocols that you may find useful for product applications.

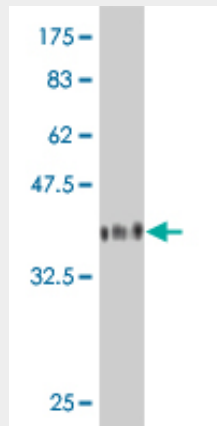
- [Western Blot](#)
- [Blocking Peptides](#)
- [Dot Blot](#)

- [Immunohistochemistry](#)
- [Immunofluorescence](#)
- [Immunoprecipitation](#)
- [Flow Cytometry](#)
- [Cell Culture](#)

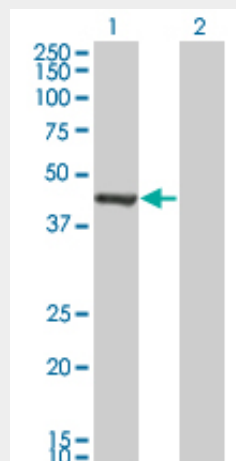
### GMPPA Antibody (monoclonal) (M01) - Images



Immunoprecipitation of GMPPA transfected lysate using anti-GMPPA monoclonal antibody and Protein A Magnetic Bead ([U0007](#)), and immunoblotted with GMPPA monoclonal antibody.



Antibody Reactive Against Recombinant Protein. Western Blot detection against Immunogen (36.74 kDa) .



Western Blot analysis of GMPPA expression in transfected 293T cell line by GMPPA monoclonal antibody (M01), clone 2F1.

Lane 1: GMPPA transfected lysate(46.291 KDa).  
Lane 2: Non-transfected lysate.

### **GMPPA Antibody (monoclonal) (M01) - Background**

This gene is thought to encode a GDP-mannose pyrophosphorylase. This enzyme catalyzes the reaction which converts mannose-1-phosphate and GTP to GDP-mannose which is involved in the production of N-linked oligosaccharides.

### **GMPPA Antibody (monoclonal) (M01) - References**

Towards a proteome-scale map of the human protein-protein interaction network. Rual JF, et al. Nature, 2005 Oct 20. PMID 16189514. Sequence comparison of human and mouse genes reveals a homologous block structure in the promoter regions. Suzuki Y, et al. Genome Res, 2004 Sep. PMID 15342556. Transcriptome characterization elucidates signaling networks that control human ES cell growth and differentiation. Brandenberger R, et al. Nat Biotechnol, 2004 Jun. PMID 15146197. Complete sequencing and characterization of 21,243 full-length human cDNAs. Ota T, et al. Nat Genet, 2004 Jan. PMID 14702039. Generation and initial analysis of more than 15,000 full-length human and mouse cDNA sequences. Strausberg RL, et al. Proc Natl Acad Sci U S A, 2002 Dec 24. PMID 12477932.