

GLUL Antibody (monoclonal) (M02)

Mouse monoclonal antibody raised against a partial recombinant GLUL.

Catalog # AT2215a

Specification

GLUL Antibody (monoclonal) (M02) - Product Information

Application	WB, E
Primary Accession	P15104
Other Accession	NM_002065
Reactivity	Human, Mouse, Rat
Host	mouse
Clonality	Monoclonal
Isotype	IgG1 Kappa
Calculated MW	42064

GLUL Antibody (monoclonal) (M02) - Additional Information**Gene ID** 2752**Other Names**

Glutamine synthetase, GS, Glutamate decarboxylase, Glutamate--ammonia ligase, GLUL, GLNS

Target/Specificity

GLUL (NP_002056, 274 a.a. ~ 373 a.a) partial recombinant protein with GST tag. MW of the GST tag alone is 26 KDa.

Dilution

WB~~1:500~1000

Format

Clear, colorless solution in phosphate buffered saline, pH 7.2 .

Storage

Store at -20°C or lower. Aliquot to avoid repeated freezing and thawing.

Precautions

GLUL Antibody (monoclonal) (M02) is for research use only and not for use in diagnostic or therapeutic procedures.

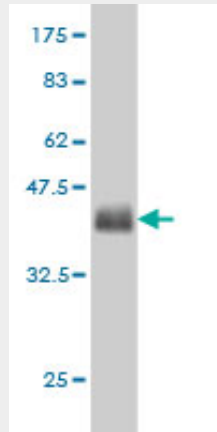
GLUL Antibody (monoclonal) (M02) - Protocols

Provided below are standard protocols that you may find useful for product applications.

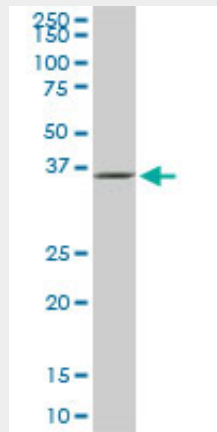
- [Western Blot](#)
- [Blocking Peptides](#)
- [Dot Blot](#)
- [Immunohistochemistry](#)

- [Immunofluorescence](#)
- [Immunoprecipitation](#)
- [Flow Cytometry](#)
- [Cell Culture](#)

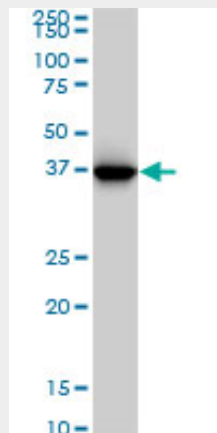
GLUL Antibody (monoclonal) (M02) - Images



Antibody Reactive Against Recombinant Protein. Western Blot detection against Immunogen (36.74 kDa) .

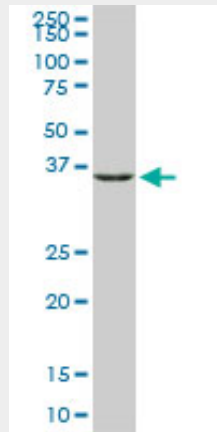


GLUL monoclonal antibody (M02), clone 3B6. Western Blot analysis of GLUL expression in PC-12 (Cat # AT2215a)

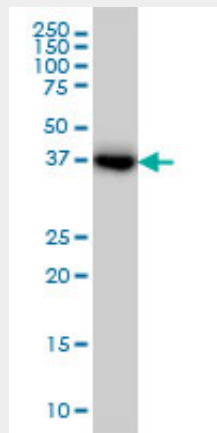


GLUL monoclonal antibody (M02), clone 3B6. Western Blot analysis of GLUL expression in HepG2

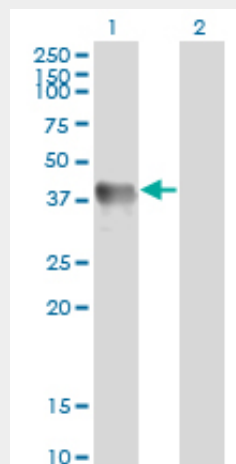
((Cat # AT2215a)



GLUL monoclonal antibody (M02), clone 3B6. Western Blot analysis of GLUL expression in Raw 264.7 ((Cat # AT2215a)



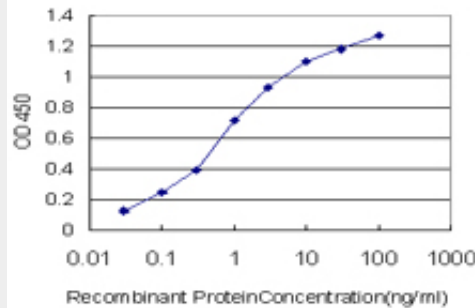
GLUL monoclonal antibody (M02), clone 3B6 Western Blot analysis of GLUL expression in Jurkat ((Cat # AT2215a)



Western Blot analysis of GLUL expression in transfected 293T cell line by GLUL monoclonal antibody (M02), clone 3B6.

Lane 1: GLUL transfected lysate(42.1 KDa).

Lane 2: Non-transfected lysate.



Detection limit for recombinant GST tagged GLUL is approximately 0.03ng/ml as a capture antibody.

GLUL Antibody (monoclonal) (M02) - Background

The protein encoded by this gene belongs to the glutamine synthetase family. It catalyzes the synthesis of glutamine from glutamate and ammonia. Glutamine is a main source of energy and is involved in cell proliferation, inhibition of apoptosis, and cell signaling. This gene is expressed during early fetal stages, and plays an important role in controlling body pH by removing ammonia from circulation. Mutations in this gene are associated with congenital glutamine deficiency. Several alternatively spliced transcript variants have been found for this gene.

GLUL Antibody (monoclonal) (M02) - References

1. Optimisation of the quantification of glutamine synthetase and myelin basic protein in cerebrospinal fluid by a combined acidification and neutralisation protocol. Herbert MK, Kuiperij HB, Verbeek MM. *J Immunol Methods*. 2012 Apr 19.