

## **GCG Antibody (monoclonal) (M02)**

Mouse monoclonal antibody raised against a full length recombinant GCG.

Catalog # AT2173a

### **Specification**

---

#### **GCG Antibody (monoclonal) (M02) - Product Information**

Application	<b>WB, E</b>
Primary Accession	<a href="#">P01275</a>
Other Accession	<a href="#">BC005278</a>
Reactivity	<b>Human</b>
Host	<b>mouse</b>
Clonality	<b>Monoclonal</b>
Isotype	<b>IgG1 Kappa</b>
Calculated MW	<b>20909</b>

#### **GCG Antibody (monoclonal) (M02) - Additional Information**

**Gene ID** 2641

##### **Other Names**

Glucagon, Glicentin, Glicentin-related polypeptide, GRPP, Oxyntomodulin, OXM, OXY, Glucagon, Glucagon-like peptide 1, GLP-1, Incretin hormone, Glucagon-like peptide 1(7-37), GLP-1(7-37), Glucagon-like peptide 1(7-36), GLP-1(7-36), Glucagon-like peptide 2, GLP-2, GCG

##### **Target/Specificity**

GCG (AAH05278, 1 a.a. ~ 180 a.a) full-length recombinant protein with GST tag. MW of the GST tag alone is 26 KDa.

##### **Dilution**

WB~~1:500~1000

##### **Format**

Clear, colorless solution in phosphate buffered saline, pH 7.2 .

##### **Storage**

Store at -20°C or lower. Aliquot to avoid repeated freezing and thawing.

##### **Precautions**

GCG Antibody (monoclonal) (M02) is for research use only and not for use in diagnostic or therapeutic procedures.

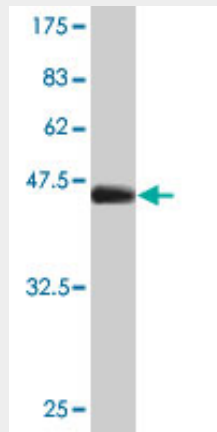
#### **GCG Antibody (monoclonal) (M02) - Protocols**

Provided below are standard protocols that you may find useful for product applications.

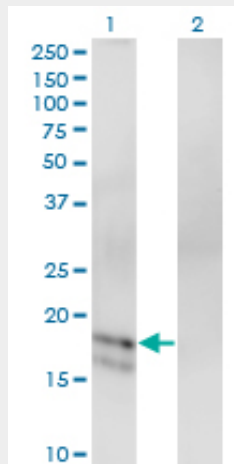
- [Western Blot](#)
- [Blocking Peptides](#)

- [Dot Blot](#)
- [Immunohistochemistry](#)
- [Immunofluorescence](#)
- [Immunoprecipitation](#)
- [Flow Cytometry](#)
- [Cell Culture](#)

### GCG Antibody (monoclonal) (M02) - Images

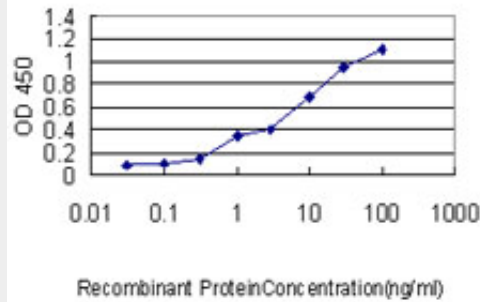


Antibody Reactive Against Recombinant Protein. Western Blot detection against Immunogen (45.54 KDa) .



Western Blot analysis of GCG expression in transfected 293T cell line by GCG monoclonal antibody (M02), clone 1E2-E6.

Lane 1: GCG transfected lysate(20.9 KDa).  
Lane 2: Non-transfected lysate.



Detection limit for recombinant GST tagged GCG is approximately 0.1ng/ml as a capture antibody.

### **GCG Antibody (monoclonal) (M02) - Background**

The protein encoded by this gene is actually a preproprotein that is cleaved into four distinct mature peptides. One of these, glucagon, is a pancreatic hormone that counteracts the glucose-lowering action of insulin by stimulating glycogenolysis and gluconeogenesis. Glucagon is a ligand for a specific G-protein linked receptor whose signalling pathway controls cell proliferation. Two of the other peptides are secreted from gut endocrine cells and promote nutrient absorption through distinct mechanisms. Finally, the fourth peptide is similar to glicentin, an active enteroglucagon.

### **GCG Antibody (monoclonal) (M02) - References**

COMMON VARIANTS IN 40 GENES ASSESSED FOR DIABETES INCIDENCE AND RESPONSE TO METFORMIN AND LIFESTYLE INTERVENTIONS IN THE DIABETES PREVENTION PROGRAM. Jablonski KA, et al. *Diabetes*, 2010 Aug 3. PMID 20682687. Variation at the NFATC2 Locus Increases the Risk of Thiazolidinedione-Induced Edema in the Diabetes REduction Assessment with ramipril and rosiglitazone Medication (DREAM) Study. Bailey SD, et al. *Diabetes Care*, 2010 Jul 13. PMID 20628086. Elevated circulating levels of an incretin hormone, glucagon-like peptide-1, are associated with metabolic components in high-risk patients with cardiovascular disease. Yamaoka-Tojo M, et al. *Cardiovasc Diabetol*, 2010 May 14. PMID 20470376. Minireview: update on incretin biology: focus on glucagon-like peptide-1. Brubaker PL. *Endocrinology*, 2010 May. PMID 20305008. The role of maternal gut hormones in normal pregnancy: fasting plasma active glucagon-like peptide 1 level is a negative predictor of fetal abdomen circumference and maternal weight change. Valsamakis G, et al. *Eur J Endocrinol*, 2010 May. PMID 20194524.