

GAS2L3 Antibody (monoclonal) (M01)

Mouse monoclonal antibody raised against a partial recombinant GAS2L3.

Catalog # AT2156a

Specification

GAS2L3 Antibody (monoclonal) (M01) - Product Information

Application	WB, E
Primary Accession	O86XJ1
Other Accession	BC043366
Reactivity	Human
Host	mouse
Clonality	Monoclonal
Isotype	IgG1 Kappa
Calculated MW	75214

GAS2L3 Antibody (monoclonal) (M01) - Additional Information

Gene ID 283431

Other Names

GAS2-like protein 3, Growth arrest-specific protein 2-like 3, GAS2L3

Target/Specificity

GAS2L3 (AAH43366, 595 a.a. ~ 694 a.a) partial recombinant protein with GST tag. MW of the GST tag alone is 26 KDa.

Dilution

WB ~ 1:500 ~ 1000

Format

Clear, colorless solution in phosphate buffered saline, pH 7.2 .

Storage

Store at -20°C or lower. Aliquot to avoid repeated freezing and thawing.

Precautions

GAS2L3 Antibody (monoclonal) (M01) is for research use only and not for use in diagnostic or therapeutic procedures.

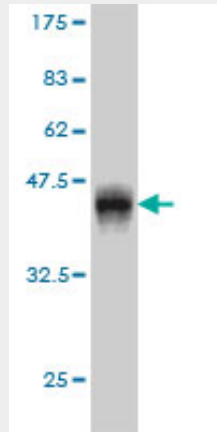
GAS2L3 Antibody (monoclonal) (M01) - Protocols

Provided below are standard protocols that you may find useful for product applications.

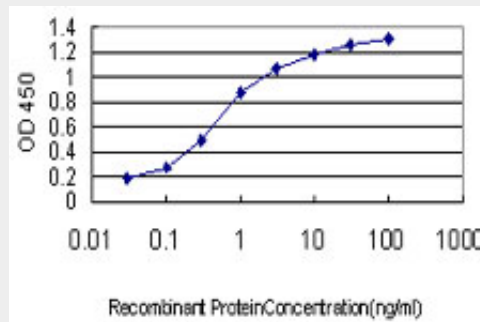
- [Western Blot](#)
- [Blocking Peptides](#)
- [Dot Blot](#)
- [Immunohistochemistry](#)

- [Immunofluorescence](#)
- [Immunoprecipitation](#)
- [Flow Cytometry](#)
- [Cell Culture](#)

GAS2L3 Antibody (monoclonal) (M01) - Images



Antibody Reactive Against Recombinant Protein. Western Blot detection against Immunogen (36.63 KDa) .



Detection limit for recombinant GST tagged GAS2L3 is approximately 0.03ng/ml as a capture antibody.

GAS2L3 Antibody (monoclonal) (M01) - References

1. GAS2L3, a novel target gene of the dream complex, is required for proper cytokinesis and genomic stability. Wolter P, Schmitt K, Fackler M, Kremling H, Probst L, Hauser S, Gruss OJ, Gaubatz S. J Cell Sci. 2012 Feb 17. [Epub ahead of print]