

## **GAPDH Antibody (monoclonal) (M01)**

Mouse monoclonal antibody raised against a partial recombinant GAPDH.

Catalog # AT2151a

### **Specification**

---

#### **GAPDH Antibody (monoclonal) (M01) - Product Information**

Application	WB, E
Primary Accession	<a href="#">P04406</a>
Other Accession	<a href="#">NM_002046</a>
Reactivity	Human, Mouse, Rat
Host	Mouse
Clonality	Monoclonal
Isotype	IgG1 Kappa
Calculated MW	36053

#### **GAPDH Antibody (monoclonal) (M01) - Additional Information**

**Gene ID** 2597

##### **Other Names**

Glyceraldehyde-3-phosphate dehydrogenase, GAPDH, Peptidyl-cysteine S-nitrosylase GAPDH, 2699-, GAPDH, GAPD

##### **Target/Specificity**

GAPDH (NP\_002037, 226 a.a. ~ 335 a.a) partial recombinant protein with GST tag. MW of the GST tag alone is 26 KDa.

##### **Dilution**

WB~~1:500~1000

##### **Format**

Clear, colorless solution in phosphate buffered saline, pH 7.2 .

##### **Storage**

Store at -20°C or lower. Aliquot to avoid repeated freezing and thawing.

##### **Precautions**

GAPDH Antibody (monoclonal) (M01) is for research use only and not for use in diagnostic or therapeutic procedures.

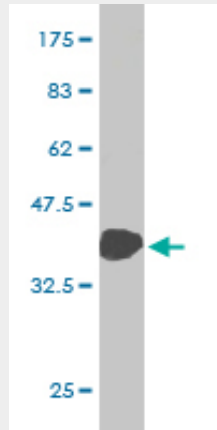
#### **GAPDH Antibody (monoclonal) (M01) - Protocols**

Provided below are standard protocols that you may find useful for product applications.

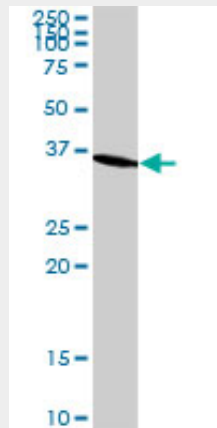
- [Western Blot](#)
- [Blocking Peptides](#)
- [Dot Blot](#)

- [Immunohistochemistry](#)
- [Immunofluorescence](#)
- [Immunoprecipitation](#)
- [Flow Cytometry](#)
- [Cell Culture](#)

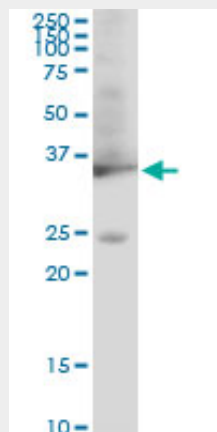
### GAPDH Antibody (monoclonal) (M01) - Images



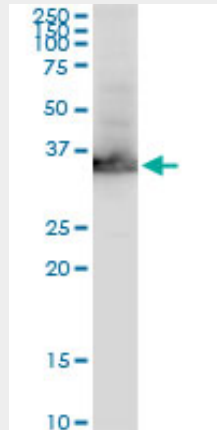
Antibody Reactive Against Recombinant Protein. Western Blot detection against Immunogen (37.84 KDa) .



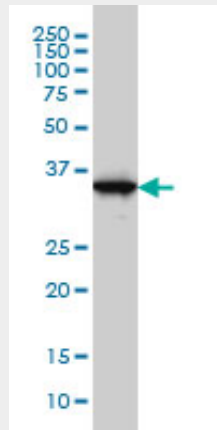
GAPDH monoclonal antibody (M01), clone 3C2. Western Blot analysis of GAPDH expression in HeLa ( (Cat # AT2151a )



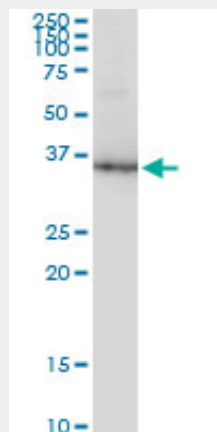
GAPDH monoclonal antibody (M01), clone 3C2. Western Blot analysis of GAPDH expression in PC-12((Cat # AT2151a )



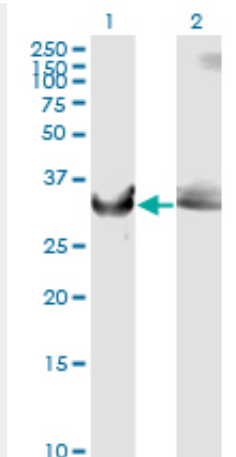
GAPDH monoclonal antibody (M01), clone 3C2. Western Blot analysis of GAPDH expression in Raw 264.7((Cat # AT2151a )



GAPDH monoclonal antibody (M01), clone 3C2 Western Blot analysis of GAPDH expression in A-431 ( (Cat # AT2151a )



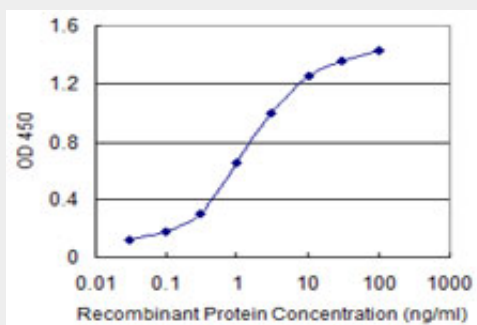
GAPDH monoclonal antibody (M01), clone 3C2. Western Blot analysis of GAPDH expression in NIH/3T3((Cat # AT2151a )



Western Blot analysis of GAPDH expression in transfected 293T cell line by GAPDH monoclonal antibody (M01), clone 3C2.

Lane 1: GAPDH transfected lysate(36.1 KDa).

Lane 2: Non-transfected lysate.



Detection limit for recombinant GST tagged GAPDH is 0.03 ng/ml as a capture antibody.

### **GAPDH Antibody (monoclonal) (M01) - Background**

The product of this gene catalyzes an important energy-yielding step in carbohydrate metabolism, the reversible oxidative phosphorylation of glyceraldehyde-3-phosphate in the presence of inorganic phosphate and nicotinamide adenine dinucleotide (NAD). The enzyme exists as a tetramer of identical chains. Many pseudogenes similar to this locus are present in the human genome.

### **GAPDH Antibody (monoclonal) (M01) - References**

- 1.Receptor for Activated Protein Kinase C: Requirement for Efficient MicroRNA Function and Reduced Expression in Hepatocellular Carcinoma.Otsuka M, Takata A, Yoshikawa T, Kojima K, Kishikawa T, Shibata C, Takekawa M, Yoshida H, Omata M, Koike K.PLoS One. 2011;6(9):e24359. Epub 2011 Sep 15.
- 2.Expression and roles of Slit/Robo in human ovarian cancer.Dai CF, Jiang YZ, Li Y, Wang K, Liu PS, Patankar MS, Zheng J.Histochem Cell Biol. 2011 Apr 5. [Epub ahead of print]
- 3.Anti-angiogenic effect of triterpenoidal saponins from Polygala senega.Arai M, Hayashi A, Sobou M, Ishida S, Kawachi T, Kotoku N, Kobayashi M.J Nat Med. 2010 Nov 2. [Epub ahead of print]
- 4.The Effect of Allelic Variation in Aldo-Keto Reductase 1C2 on the In Vitro Metabolism of Dihydrotestosterone.Takahashi RH, Grigliatti TA, Reid RE, Riggs KW.J Pharmacol Exp Ther. 2009 Jun;329(3):1032-9. Epub 2009 Mar 3.