

**FKBP10 Antibody (monoclonal) (M01)****Mouse monoclonal antibody raised against a partial recombinant FKBP10.****Catalog # AT2054a****Specification**

---

**FKBP10 Antibody (monoclonal) (M01) - Product Information**

Application	<b>WB, E</b>
Primary Accession	<a href="#">O96AY3</a>
Other Accession	<a href="#">NM_021939</a>
Reactivity	<b>Human</b>
Host	<b>mouse</b>
Clonality	<b>Monoclonal</b>
Isotype	<b>IgG2a Kappa</b>
Calculated MW	<b>64245</b>

**FKBP10 Antibody (monoclonal) (M01) - Additional Information****Gene ID** 60681**Other Names**

Peptidyl-prolyl cis-trans isomerase FKBP10, PPIase FKBP10, 65 kDa FK506-binding protein, 65 kDa FKBP, FKBP-65, FK506-binding protein 10, FKBP-10, Immunophilin FKBP65, Rotamase, FKBP10, FKBP65

**Target/Specificity**

FKBP10 (NP\_068758, 377 a.a. ~ 470 a.a) partial recombinant protein with GST tag. MW of the GST tag alone is 26 kDa.

**Dilution**

WB~~1:500~1000

**Format**

Clear, colorless solution in phosphate buffered saline, pH 7.2 .

**Storage**

Store at -20°C or lower. Aliquot to avoid repeated freezing and thawing.

**Precautions**

FKBP10 Antibody (monoclonal) (M01) is for research use only and not for use in diagnostic or therapeutic procedures.

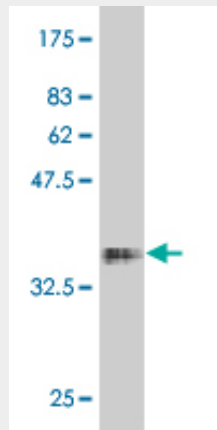
**FKBP10 Antibody (monoclonal) (M01) - Protocols**

Provided below are standard protocols that you may find useful for product applications.

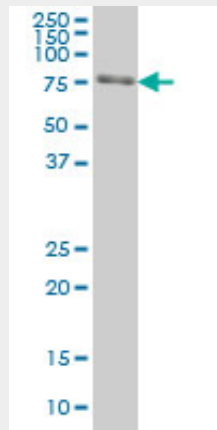
- [Western Blot](#)
- [Blocking Peptides](#)

- [Dot Blot](#)
- [Immunohistochemistry](#)
- [Immunofluorescence](#)
- [Immunoprecipitation](#)
- [Flow Cytometry](#)
- [Cell Culture](#)

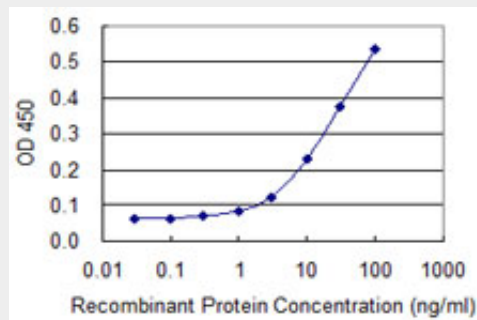
**FKBP10 Antibody (monoclonal) (M01) - Images**



Antibody Reactive Against Recombinant Protein. Western Blot detection against Immunogen (36.08 KDa) .



FKBP10 monoclonal antibody (M01), clone 1C6 Western Blot analysis of FKBP10 expression in HeLa ( (Cat # AT2054a )



Detection limit for recombinant GST tagged FKBP10 is 1 ng/ml as a capture antibody.

**FKBP10 Antibody (monoclonal) (M01) - Background**

The protein encoded by this gene belongs to the FKBP-type peptidyl-prolyl cis/trans isomerase (PPIase) family. This protein localizes to the endoplasmic reticulum and acts as a molecular chaperone. Alternatively spliced variants encoding different isoforms have been reported, but their biological validity has not been determined.

### **FKBP10 Antibody (monoclonal) (M01) - References**

Mutations in the gene encoding the RER protein FKBP65 cause autosomal-recessive osteogenesis imperfecta. Alanay Y, et al. *Am J Hum Genet*, 2010 Apr 9. PMID 20362275. Mammalian BTBD12/SLX4 assembles a Holliday junction resolvase and is required for DNA repair. Svendsen JM, et al. *Cell*, 2009 Jul 10. PMID 19596235. The rough endoplasmic reticulum-resident FK506-binding protein FKBP65 is a molecular chaperone that interacts with collagens. Ishikawa Y, et al. *J Biol Chem*, 2008 Nov 14. PMID 18786928. Insulin-dependent interactions of proteins with GLUT4 revealed through stable isotope labeling by amino acids in cell culture (SILAC). Foster LJ, et al. *J Proteome Res*, 2006 Jan. PMID 16396496. Developmental regulation and coordinate reexpression of FKBP65 with extracellular matrix proteins after lung injury suggest a specialized function for this endoplasmic reticulum immunophilin. Patterson CE, et al. *Cell Stress Chaperones*, 2005 Winter. PMID 16333983.