

FIS1 Antibody (monoclonal) (M01)

Mouse monoclonal antibody raised against a full length recombinant FIS1.

Catalog # AT2052a

Specification

FIS1 Antibody (monoclonal) (M01) - Product Information

Application	WB, IHC, E
Primary Accession	O9Y3D6
Other Accession	BC003540
Reactivity	Human
Host	mouse
Clonality	Monoclonal
Isotype	IgG2b Kappa
Calculated MW	16938

FIS1 Antibody (monoclonal) (M01) - Additional Information

Gene ID 51024

Other Names

Mitochondrial fission 1 protein, FIS1 homolog, hFis1, Tetratricopeptide repeat protein 11, TPR repeat protein 11, FIS1, TTC11

Target/Specificity

FIS1 (AAH03540.1, 1 a.a. ~ 152 a.a) full-length recombinant protein with GST tag. MW of the GST tag alone is 26 KDa.

Dilution

WB~~1:500~1000

Format

Clear, colorless solution in phosphate buffered saline, pH 7.2 .

Storage

Store at -20°C or lower. Aliquot to avoid repeated freezing and thawing.

Precautions

FIS1 Antibody (monoclonal) (M01) is for research use only and not for use in diagnostic or therapeutic procedures.

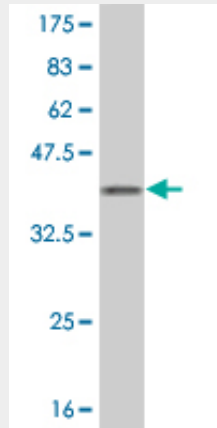
FIS1 Antibody (monoclonal) (M01) - Protocols

Provided below are standard protocols that you may find useful for product applications.

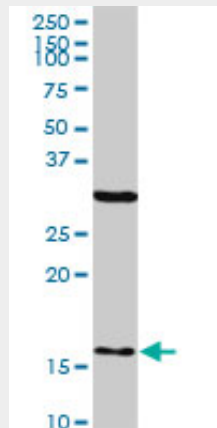
- [Western Blot](#)
- [Blocking Peptides](#)
- [Dot Blot](#)

- [Immunohistochemistry](#)
- [Immunofluorescence](#)
- [Immunoprecipitation](#)
- [Flow Cytometry](#)
- [Cell Culture](#)

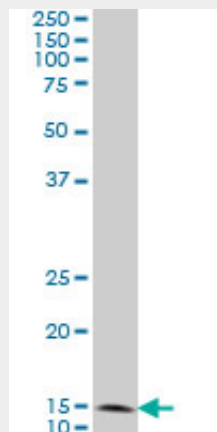
FIS1 Antibody (monoclonal) (M01) - Images



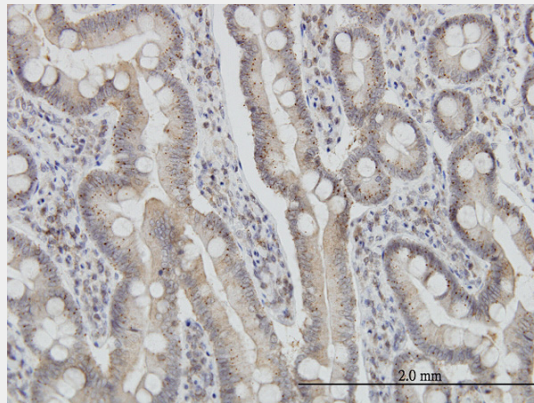
Antibody Reactive Against Recombinant Protein. Western Blot detection against Immunogen (42.46 KDa) .



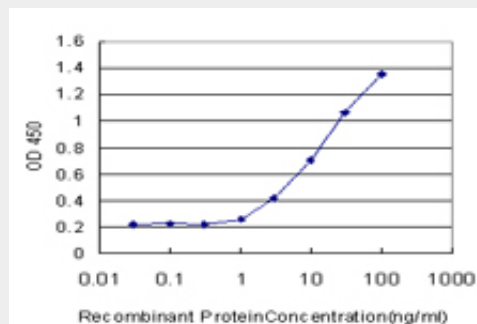
FIS1 monoclonal antibody (M01), clone 1G9. Western Blot analysis of FIS1 expression in human liver.



FIS1 monoclonal antibody (M01), clone 1G9 Western Blot analysis of FIS1 expression in A-431 (Cat # AT2052a)



Immunoperoxidase of monoclonal antibody to FIS1 on formalin-fixed paraffin-embedded human small Intestine. [antibody concentration 3 ug/ml]



Detection limit for recombinant GST tagged FIS1 is approximately 1ng/ml as a capture antibody.

FIS1 Antibody (monoclonal) (M01) - Background

The balance between fission and fusion regulates the morphology of mitochondria. TTC11 is a component of a mitochondrial complex that promotes mitochondrial fission (James et al., 2003 [PubMed 12783892]).

FIS1 Antibody (monoclonal) (M01) - References

Specific mitochondrial calcium overload induces mitochondrial fission in prostate cancer cells. Kaddour-Djebbar I, et al. *Int J Oncol*, 2010 Jun. PMID 20428767. Decreased expression of Drp1 and Fis1 mediates mitochondrial elongation in senescent cells and enhances resistance to oxidative stress through PINK1. Mai S, et al. *J Cell Sci*, 2010 Mar 15. PMID 20179104. Identification and characterization of unique proline-rich peptides binding to the mitochondrial fission protein hFis1. Serasinghe MN, et al. *J Biol Chem*, 2010 Jan 1. PMID 19864424. The mitochondrial outer membrane protein hFis1 regulates mitochondrial morphology and fission through self-interaction. Serasinghe MN, et al. *Exp Cell Res*, 2008 Nov 15. PMID 18845145. Selective actions of mitochondrial fission/fusion genes on metabolism-secretion coupling in insulin-releasing cells. Park KS, et al. *J Biol Chem*, 2008 Nov 28. PMID 18832378.