

## **FCER1A Antibody (monoclonal) (M01)**

Mouse monoclonal antibody raised against a full length recombinant FCER1A.

Catalog # AT2024a

### **Specification**

---

#### **FCER1A Antibody (monoclonal) (M01) - Product Information**

Application	WB, E
Primary Accession	<a href="#">P12319</a>
Other Accession	<a href="#">BC005912</a>
Reactivity	Human
Host	mouse
Clonality	Monoclonal
Isotype	IgG1 Kappa
Calculated MW	29596

#### **FCER1A Antibody (monoclonal) (M01) - Additional Information**

**Gene ID** 2205

##### **Other Names**

High affinity immunoglobulin epsilon receptor subunit alpha, Fc-epsilon RI-alpha, FcERI, IgE Fc receptor subunit alpha, FCER1A, FCE1A

##### **Target/Specificity**

FCER1A (AAH05912.1, 1 a.a. ~ 257 a.a) full-length recombinant protein with GST tag. MW of the GST tag alone is 26 KDa.

##### **Dilution**

WB~~1:500~1000

##### **Format**

Clear, colorless solution in phosphate buffered saline, pH 7.2 .

##### **Storage**

Store at -20°C or lower. Aliquot to avoid repeated freezing and thawing.

##### **Precautions**

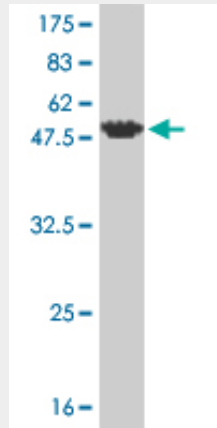
FCER1A Antibody (monoclonal) (M01) is for research use only and not for use in diagnostic or therapeutic procedures.

#### **FCER1A Antibody (monoclonal) (M01) - Protocols**

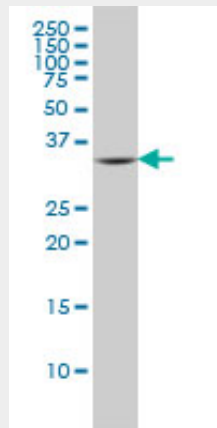
Provided below are standard protocols that you may find useful for product applications.

- [Western Blot](#)
- [Blocking Peptides](#)
- [Dot Blot](#)

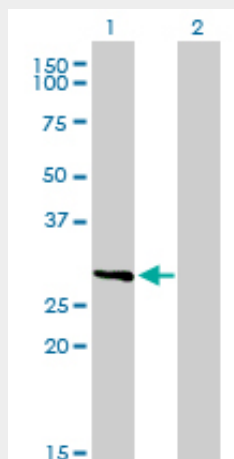
- [Immunohistochemistry](#)
- [Immunofluorescence](#)
- [Immunoprecipitation](#)
- [Flow Cytometry](#)
- [Cell Culture](#)

**FCER1A Antibody (monoclonal) (M01) - Images**

Antibody Reactive Against Recombinant Protein. Western Blot detection against Immunogen (54.01 kDa) .

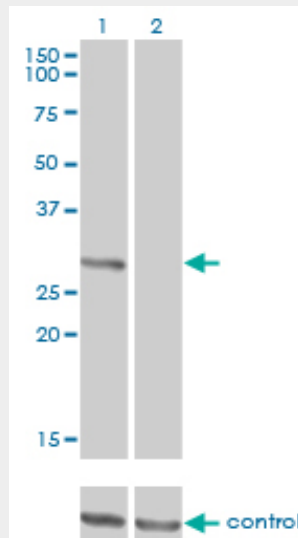


FCER1A monoclonal antibody (M01), clone 2C12-3B6 Western Blot analysis of FCER1A expression in A-549 ( (Cat # AT2024a )

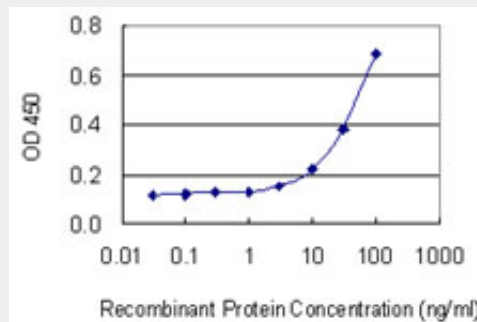


Western Blot analysis of FCER1A expression in transfected 293T cell line by FCER1A monoclonal antibody (M01), clone 2C12-3B6.

Lane 1: FCER1A transfected lysate(29.6 KDa).  
Lane 2: Non-transfected lysate.



Western blot analysis of FCER1A over-expressed 293 cell line, cotransfected with FCER1A Validated Chimera RNAi ( (Cat # AT2024a )



Detection limit for recombinant GST tagged FCER1A is 1 ng/ml as a capture antibody.

### FCER1A Antibody (monoclonal) (M01) - Background

The IgE receptor plays a central role in allergic disease, coupling allergen and mast cell to initiate the inflammatory and immediate hypersensitivity responses that are characteristic of disorders such as hay fever and asthma. The allergic response occurs when 2 or more high-affinity IgE receptors are crosslinked via IgE molecules that in turn are bound to an allergen (antigen) molecule. A perturbation occurs that brings about the release of histamine and proteases from the granules in the cytoplasm of the mast cell and leads to the synthesis of prostaglandins and leukotrienes--potent effectors of the hypersensitivity response. The IgE receptor consists of 3 subunits: alpha, beta (MIM 147138), and gamma (MIM 147139); only the alpha subunit is glycosylated.

### FCER1A Antibody (monoclonal) (M01) - References

Single nucleotide polymorphisms in inflammation-related genes are associated with venous thromboembolism. Beckers MM, et al. Eur J Intern Med, 2010 Aug. PMID 20603037. Prolonged culture of mast cells with high-glucose medium enhances the Fc epsilon RI-mediated degranulation

response and leukotriene C4 production. Kitahata Y, et al. Int Arch Allergy Immunol, 2010. PMID 20523060. Interleukin-9 polymorphism in infants with respiratory syncytial virus infection: an opposite effect in boys and girls. Schuurhof A, et al. Pediatr Pulmonol, 2010 Jun. PMID 20503287. Polymorphisms in innate immunity genes and risk of childhood leukemia. Han S, et al. Hum Immunol, 2010 Jul. PMID 20438785. Counterregulation between the FcepsilonRI pathway and antiviral responses in human plasmacytoid dendritic cells. Gill MA, et al. J Immunol, 2010 Jun 1. PMID 20410486.