

## **F2 Antibody (monoclonal) (M01)**

Mouse monoclonal antibody raised against a partial recombinant F2.

Catalog # AT1977a

### **Specification**

---

#### **F2 Antibody (monoclonal) (M01) - Product Information**

Application	IP, WB, E
Primary Accession	<a href="#">P00734</a>
Other Accession	<a href="#">BC051332</a>
Reactivity	Human
Host	mouse
Clonality	Monoclonal
Isotype	IgG
Calculated MW	70037

#### **F2 Antibody (monoclonal) (M01) - Additional Information**

**Gene ID** 2147

##### **Other Names**

Prothrombin, Coagulation factor II, Activation peptide fragment 1, Activation peptide fragment 2, Thrombin light chain, Thrombin heavy chain, F2

##### **Target/Specificity**

F2 (AAH51332, 263 a.a. ~ 362 a.a) partial recombinant protein with GST tag. MW of the GST tag alone is 26 KDa.

##### **Dilution**

WB~~1:500~1000

##### **Format**

Clear, colorless solution in phosphate buffered saline, pH 7.2 .

##### **Storage**

Store at -20°C or lower. Aliquot to avoid repeated freezing and thawing.

##### **Precautions**

F2 Antibody (monoclonal) (M01) is for research use only and not for use in diagnostic or therapeutic procedures.

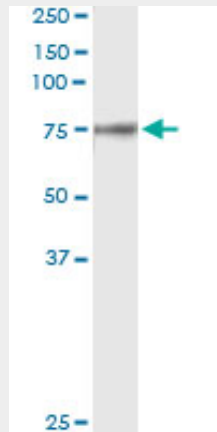
#### **F2 Antibody (monoclonal) (M01) - Protocols**

Provided below are standard protocols that you may find useful for product applications.

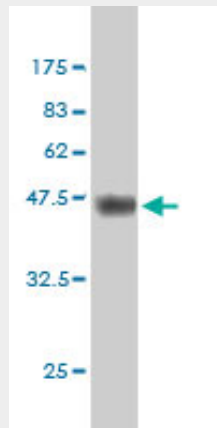
- [Western Blot](#)
- [Blocking Peptides](#)
- [Dot Blot](#)

- [Immunohistochemistry](#)
- [Immunofluorescence](#)
- [Immunoprecipitation](#)
- [Flow Cytometry](#)
- [Cell Culture](#)

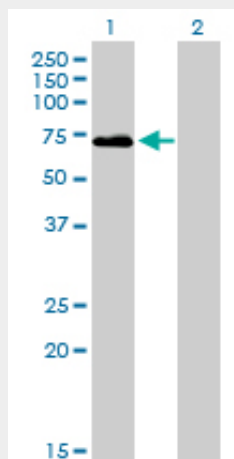
## F2 Antibody (monoclonal) (M01) - Images



Immunoprecipitation of F2 transfected lysate using anti-F2 monoclonal antibody and Protein A Magnetic Bead ([U0007](#)), and immunoblotted with F2 MaxPab rabbit polyclonal antibody.

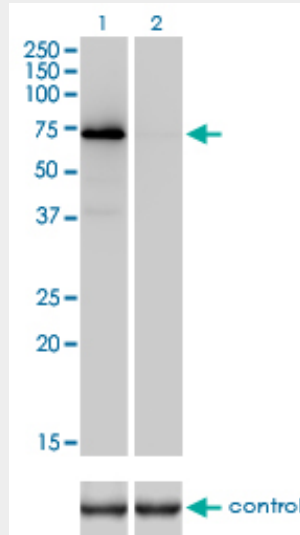


Antibody Reactive Against Recombinant Protein. Western Blot detection against Immunogen (36.74 kDa) .

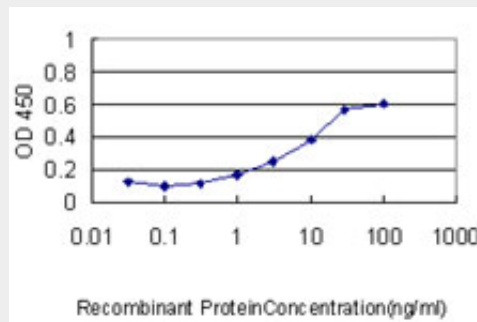


Western Blot analysis of F2 expression in transfected 293T cell line by F2 monoclonal antibody (M01), clone 1B7.

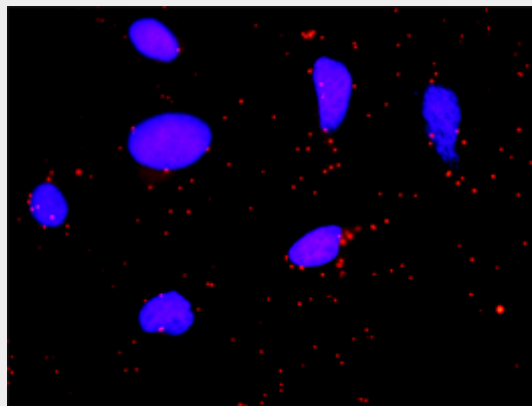
Lane 1: F2 transfected lysate(70 KDa).  
 Lane 2: Non-transfected lysate.



Western blot analysis of F2 over-expressed 293 cell line, cotransfected with F2 Validated Chimera RNAi (Cat # AT1977a)



Detection limit for recombinant GST tagged F2 is approximately 1ng/ml as a capture antibody.



Proximity Ligation Analysis of protein-protein interactions between FGA and F2. HeLa cells were stained with anti-FGA rabbit purified polyclonal 1:1200 and anti-F2 mouse monoclonal antibody 1:50. Each red dot represents the detection of protein-protein interaction complex, and nuclei were counterstained with DAPI (blue).

## **F2 Antibody (monoclonal) (M01) - Background**

Coagulation factor II is proteolytically cleaved to form thrombin in the first step of the coagulation cascade which ultimately results in the stemming of blood loss. F2 also plays a role in maintaining vascular integrity during development and postnatal life. Mutations in F2 leads to various forms of thrombosis and dysprothrombinemia.

## **F2 Antibody (monoclonal) (M01) - References**

The association of protein S Tokushima-K196E with a risk of deep vein thrombosis. Ikejiri M, et al. *Int J Hematol*, 2010 Sep. PMID 20811787. Role of Genetic and Acquired Prothrombotic Risk Factors in Genesis of Sudden Sensorineural Hearing Loss. Fusconi M, et al. *Audiol Neurootol*, 2010 Aug 25. PMID 20798492. Risk of venous thrombosis in pregnancy among carriers of the factor V Leiden and the prothrombin gene G20210A polymorphisms. Jacobsen AF, et al. *J Thromb Haemost*, 2010 Aug 23. PMID 20735725. Prothrombotic state, cardiovascular and metabolic syndrome risk factors in prepubertal children born large-for-gestational age (LGA). Evagelidou EN, et al. *Diabetes Care*, 2010 Aug 19. PMID 20724652. Thrombophilic risk factors for placental stillbirth. Simchen MJ, et al. *Eur J Obstet Gynecol Reprod Biol*, 2010 Aug 11. PMID 20708329.