

EXT2 Antibody (monoclonal) (M01)

Mouse monoclonal antibody raised against a partial recombinant EXT2.

Catalog # AT1971a

Specification

EXT2 Antibody (monoclonal) (M01) - Product Information

Application	WB, E
Primary Accession	O93063
Other Accession	BC010058
Reactivity	Human
Host	mouse
Clonality	Monoclonal
Isotype	IgG1 kappa
Calculated MW	82255

EXT2 Antibody (monoclonal) (M01) - Additional Information

Gene ID 2132

Other Names

Exostosin-2, Glucuronosyl-N-acetylglucosaminyl-proteoglycan/N-acetylglucosaminyl-proteoglycan 4-alpha-N-acetylglucosaminyltransferase, Multiple exostoses protein 2, Putative tumor suppressor protein EXT2, EXT2

Target/Specificity

EXT2 (AAH10058, 216 a.a. ~ 315 a.a) partial recombinant protein with GST tag. MW of the GST tag alone is 26 KDa.

Dilution

WB~~1:500~1000

Format

Clear, colorless solution in phosphate buffered saline, pH 7.2 .

Storage

Store at -20°C or lower. Aliquot to avoid repeated freezing and thawing.

Precautions

EXT2 Antibody (monoclonal) (M01) is for research use only and not for use in diagnostic or therapeutic procedures.

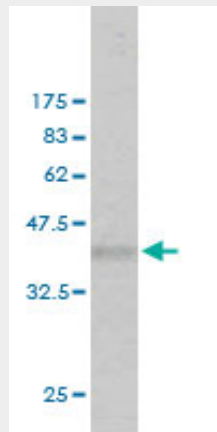
EXT2 Antibody (monoclonal) (M01) - Protocols

Provided below are standard protocols that you may find useful for product applications.

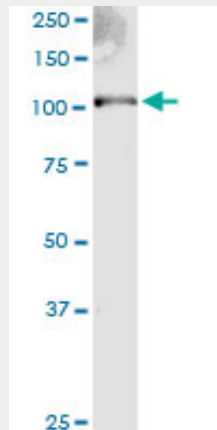
- [Western Blot](#)
- [Blocking Peptides](#)

- [Dot Blot](#)
- [Immunohistochemistry](#)
- [Immunofluorescence](#)
- [Immunoprecipitation](#)
- [Flow Cytometry](#)
- [Cell Culture](#)

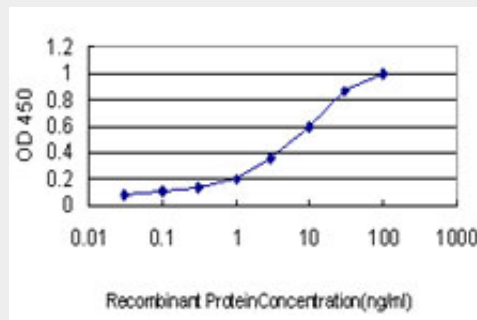
EXT2 Antibody (monoclonal) (M01) - Images



Antibody Reactive Against Recombinant Protein. Western Blot detection against Immunogen (36.63 KDa) .



EXT2 monoclonal antibody (M01), clone 3G6. Western Blot analysis of EXT2 expression in human spleen.



Detection limit for recombinant GST tagged EXT2 is approximately 0.1ng/ml as a capture antibody.

EXT2 Antibody (monoclonal) (M01) - Background

This gene encodes one of two glycosyltransferases involved in the chain elongation step of heparan sulfate biosynthesis. Mutations in this gene cause the type II form of multiple exostoses. Alternatively spliced transcript variants encoding different isoforms have been noted for this gene.

EXT2 Antibody (monoclonal) (M01) - References

Variation at the NFATC2 Locus Increases the Risk of Thiazolinedione-Induced Edema in the Diabetes REduction Assessment with ramipril and rosiglitazone Medication (DREAM) Study. Bailey SD, et al. *Diabetes Care*, 2010 Jul 13. PMID 20628086. Replication of recently described type 2 diabetes gene variants in a South Indian population. Chidambaram M, et al. *Metabolism*, 2010 Jun 24. PMID 20580033. Evaluating the discriminative power of multi-trait genetic risk scores for type 2 diabetes in a northern Swedish population. Fontaine-Bisson B, et al. *Diabetologia*, 2010 Oct. PMID 20571754. Genetic models of osteochondroma onset and neoplastic progression: evidence for mechanisms alternative to EXT genes inactivation. Zuntini M, et al. *Oncogene*, 2010 Jul 1. PMID 20418910. Personalized smoking cessation: interactions between nicotine dose, dependence and quit-success genotype score. Rose JE, et al. *Mol Med*, 2010 Jul-Aug. PMID 20379614.