

**ETV6 Antibody (monoclonal) (M01)**

Mouse monoclonal antibody raised against a full length recombinant ETV6.

Catalog # AT1956a

**Specification**

---

**ETV6 Antibody (monoclonal) (M01) - Product Information**

Application	WB, IHC, E
Primary Accession	<a href="#">P41212</a>
Other Accession	<a href="#">BC043399</a>
Reactivity	Human
Host	mouse
Clonality	Monoclonal
Isotype	IgG1 Kappa
Calculated MW	53000

**ETV6 Antibody (monoclonal) (M01) - Additional Information**

Gene ID 2120

**Other Names**

Transcription factor ETV6, ETS translocation variant 6, ETS-related protein Tel1, Tel, ETV6, TEL, TEL1

**Target/Specificity**

ETV6 (AAH43399, 1 a.a. ~ 452 a.a) full-length recombinant protein with GST tag. MW of the GST tag alone is 26 KDa.

**Dilution**

WB~~1:500~1000

**Format**

Clear, colorless solution in phosphate buffered saline, pH 7.2 .

**Storage**

Store at -20°C or lower. Aliquot to avoid repeated freezing and thawing.

**Precautions**

ETV6 Antibody (monoclonal) (M01) is for research use only and not for use in diagnostic or therapeutic procedures.

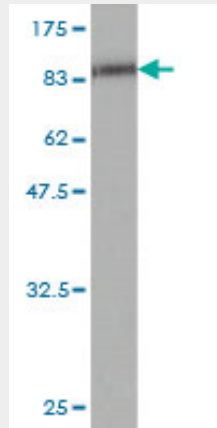
**ETV6 Antibody (monoclonal) (M01) - Protocols**

Provided below are standard protocols that you may find useful for product applications.

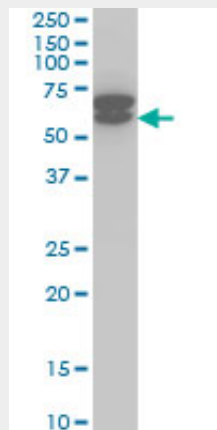
- [Western Blot](#)
- [Blocking Peptides](#)
- [Dot Blot](#)

- [Immunohistochemistry](#)
- [Immunofluorescence](#)
- [Immunoprecipitation](#)
- [Flow Cytometry](#)
- [Cell Culture](#)

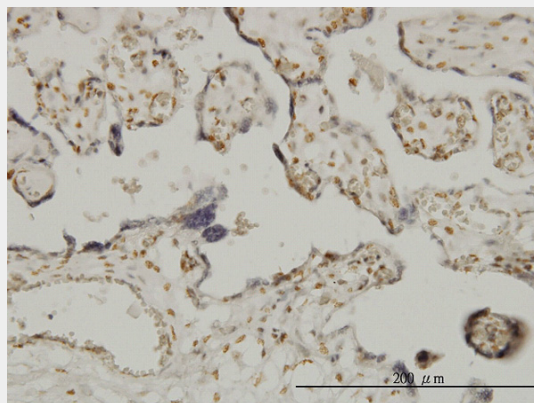
### ETV6 Antibody (monoclonal) (M01) - Images



Antibody Reactive Against Recombinant Protein. Western Blot detection against Immunogen (75.46 KDa) .

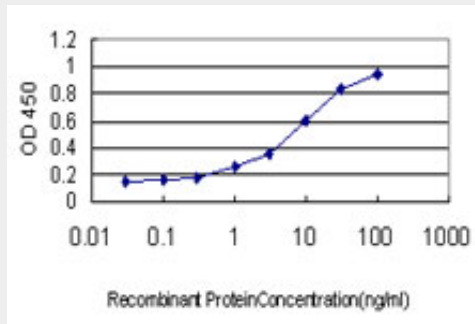


ETV6 monoclonal antibody (M01), clone 3B10 Western Blot analysis of ETV6 expression in Jurkat (Cat # AT1956a )



Immunoperoxidase of monoclonal antibody to ETV6 on formalin-fixed paraffin-embedded human

placenta. [antibody concentration 3 ug/ml]



Detection limit for recombinant GST tagged ETV6 is approximately 0.1ng/ml as a capture antibody.

### **ETV6 Antibody (monoclonal) (M01) - Background**

This gene encodes an ETS family transcription factor. The product of this gene contains two functional domains: a N-terminal pointed (PNT) domain that is involved in protein-protein interactions with itself and other proteins, and a C-terminal DNA-binding domain. Gene knockout studies in mice suggest that it is required for hematopoiesis and maintenance of the developing vascular network. This gene is known to be involved in a large number of chromosomal rearrangements associated with leukemia and congenital fibrosarcoma.

### **ETV6 Antibody (monoclonal) (M01) - References**

1.ETV6 mutations in early immature human T cell leukemias.Van Vlierberghe P, Ambesi-Impombato A, Perez-Garcia A, Haydu JE, Rigo I, Hadler M, Tosello V, Della Gatta G, Paietta E, Racevskis J, Wiernik PH, Luger SM, Rowe JM, Rue M, Ferrando AA.J Exp Med. 2011 Dec 19;208(13):2571-9. Epub 2011 Dec 12.  
2.The ETS Family Member TEL Binds to Nuclear Receptors RAR and RXR and Represses Gene Activation.Meester-Smoor MA, Janssen MJ, Ter Haar WM, van Wely KH, Aarnoudse AJ, van Oord G, van Tilburg GB, Zwarthoff EC.PLoS One. 2011;6(9):e23620. Epub 2011 Sep 16.