

ETV5 Antibody (monoclonal) (M02)

Mouse monoclonal antibody raised against a partial recombinant ETV5.

Catalog # AT1955a

Specification

ETV5 Antibody (monoclonal) (M02) - Product Information

Application	WB, E
Primary Accession	P41161
Other Accession	NM_004454
Reactivity	Human, Mouse, Rat
Host	Mouse
Clonality	Monoclonal
Isotype	IgG1 Kappa
Calculated MW	57838

ETV5 Antibody (monoclonal) (M02) - Additional Information

Gene ID 2119

Other Names

ETS translocation variant 5, Ets-related protein ERM, ETV5, ERM

Target/Specificity

ETV5 (NP_004445, 181 a.a. ~ 290 a.a) partial recombinant protein with GST tag. MW of the GST tag alone is 26 KDa.

Dilution

WB~~1:500~1000

Format

Clear, colorless solution in phosphate buffered saline, pH 7.2 .

Storage

Store at -20°C or lower. Aliquot to avoid repeated freezing and thawing.

Precautions

ETV5 Antibody (monoclonal) (M02) is for research use only and not for use in diagnostic or therapeutic procedures.

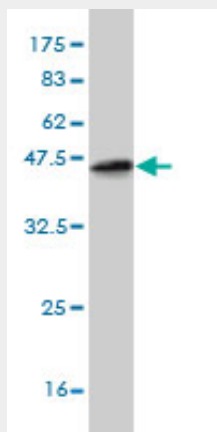
ETV5 Antibody (monoclonal) (M02) - Protocols

Provided below are standard protocols that you may find useful for product applications.

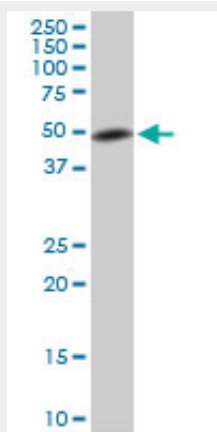
- [Western Blot](#)
- [Blocking Peptides](#)
- [Dot Blot](#)
- [Immunohistochemistry](#)

- [Immunofluorescence](#)
- [Immunoprecipitation](#)
- [Flow Cytometry](#)
- [Cell Culture](#)

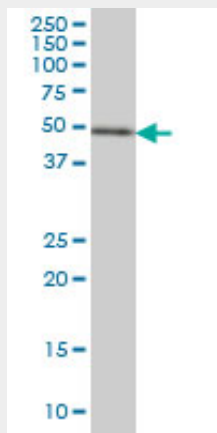
ETV5 Antibody (monoclonal) (M02) - Images



Antibody Reactive Against Recombinant Protein. Western Blot detection against Immunogen (37.84 KDa) .

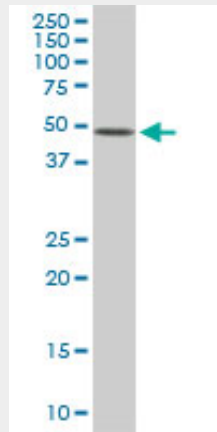


ETV5 monoclonal antibody (M02), clone 7C10. Western Blot analysis of ETV5 expression in PC-12 ((Cat # AT1955a)

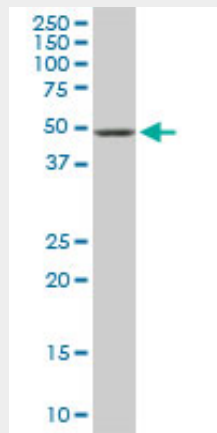


ETV5 monoclonal antibody (M02), clone 7C10 Western Blot analysis of ETV5 expression in HeLa S3

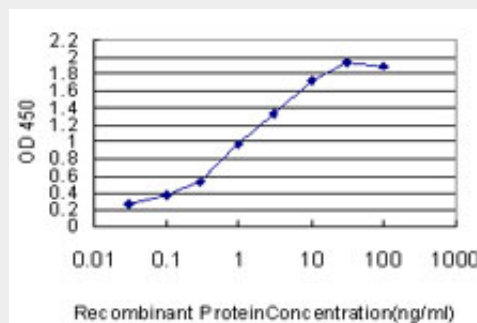
NE ((Cat # AT1955a)



ETV5 monoclonal antibody (M02), clone 7C10. Western Blot analysis of ETV5 expression in Raw 264.7 ((Cat # AT1955a)



ETV5 monoclonal antibody (M02), clone 7C10. Western Blot analysis of ETV5 expression in NIH/3T3 ((Cat # AT1955a)



Detection limit for recombinant GST tagged ETV5 is approximately 0.03ng/ml as a capture antibody.

ETV5 Antibody (monoclonal) (M02) - References

- 1.Cyclin D1 enhances the response to estrogen and progesterone by regulating progesterone receptor expression. Yang C, Chen L, Li C, Lynch MC, Brisken C, Schmidt EV. Mol Cell Biol. 2010 Apr 19. [Epub ahead of print]
- 2.Characterization of TMPRSS2:ETV5 and SLC45A3:ETV5 gene fusions in prostate cancer. Helgeson BE, Tomlins SA, Shah N, Laxman B, Cao Q, Prensner JR, Cao X, Singla N, Montie JE, Varambally S, Mehra R, Chinnaiyan AM. Cancer Res. 2008 Jan 1;68(1):73-80.