

ETV1 Antibody (monoclonal) (M01)

Mouse monoclonal antibody raised against a partial recombinant ETV1.

Catalog # AT1952a

Specification

ETV1 Antibody (monoclonal) (M01) - Product Information

Application	WB, E
Primary Accession	P50549
Other Accession	NM_004956
Reactivity	Human
Host	Mouse
Clonality	Monoclonal
Isotype	IgG1 Kappa
Calculated MW	55131

ETV1 Antibody (monoclonal) (M01) - Additional Information**Gene ID** 2115**Other Names**

ETS translocation variant 1, Ets-related protein 81, ETV1, ER81

Target/Specificity

ETV1 (NP_004947, 148 a.a. ~ 257 a.a) partial recombinant protein with GST tag. MW of the GST tag alone is 26 KDa.

Dilution

WB~~1:500~1000

Format

Clear, colorless solution in phosphate buffered saline, pH 7.2 .

Storage

Store at -20°C or lower. Aliquot to avoid repeated freezing and thawing.

Precautions

ETV1 Antibody (monoclonal) (M01) is for research use only and not for use in diagnostic or therapeutic procedures.

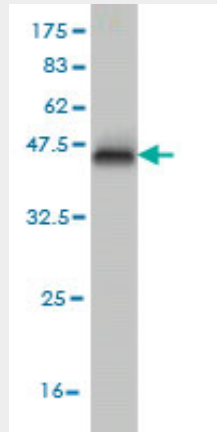
ETV1 Antibody (monoclonal) (M01) - Protocols

Provided below are standard protocols that you may find useful for product applications.

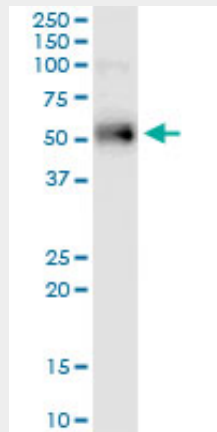
- [Western Blot](#)
- [Blocking Peptides](#)
- [Dot Blot](#)
- [Immunohistochemistry](#)

- [Immunofluorescence](#)
- [Immunoprecipitation](#)
- [Flow Cytometry](#)
- [Cell Culture](#)

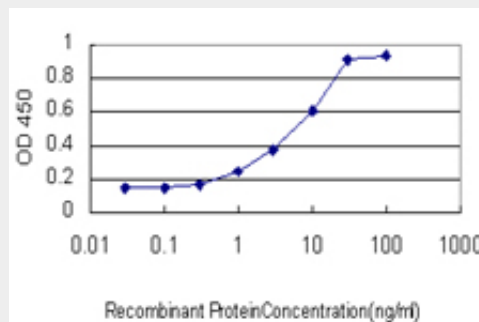
ETV1 Antibody (monoclonal) (M01) - Images



Antibody Reactive Against Recombinant Protein. Western Blot detection against Immunogen (37.84 KDa) .



ETV1 monoclonal antibody (M01), clone 2A8. Western Blot analysis of ETV1 expression in human pancreas.



Detection limit for recombinant GST tagged ETV1 is approximately 1ng/ml as a capture antibody.

ETV1 Antibody (monoclonal) (M01) - References

An oncogenic role for ETV1 in melanoma. Jan?-Valbuena J, et al. Cancer Res, 2010 Mar 1. PMID

20160028.Molecular characterisation of ERG, ETV1 and PTEN gene loci identifies patients at low and high risk of death from prostate cancer. Reid AH, et al. Br J Cancer, 2010 Feb 16. PMID 20104229.Induction of prostatic intraepithelial neoplasia and modulation of androgen receptor by ETS variant 1/ETS-related protein 81. Shin S, et al. Cancer Res, 2009 Oct 15. PMID 19789348.Transcriptional activation of hTERT in breast carcinomas by the Her2-ER81-related pathway. Vageli D, et al. Oncol Res, 2009. PMID 19718948.Characterization of ETS gene aberrations in select histologic variants of prostate carcinoma. Han B, et al. Mod Pathol, 2009 Sep. PMID 19465903.