

## **ESR2 Antibody (monoclonal) (M01)**

Mouse monoclonal antibody raised against a partial recombinant ESR2.

Catalog # AT1950a

### **Specification**

---

#### **ESR2 Antibody (monoclonal) (M01) - Product Information**

Application	IF, WB, E
Primary Accession	<a href="#">O92731</a>
Other Accession	<a href="#">NM_001437</a>
Reactivity	Human
Host	mouse
Clonality	Monoclonal
Isotype	IgG2b Kappa
Calculated MW	59216

#### **ESR2 Antibody (monoclonal) (M01) - Additional Information**

**Gene ID** 2100

##### **Other Names**

Estrogen receptor beta, ER-beta, Nuclear receptor subfamily 3 group A member 2, ESR2, ESTRB, NR3A2

##### **Target/Specificity**

ESR2 (NP\_001428, 22 a.a. ~ 121 a.a) partial recombinant protein with GST tag. MW of the GST tag alone is 26 KDa.

##### **Dilution**

WB~~1:500~1000

##### **Format**

Clear, colorless solution in phosphate buffered saline, pH 7.2 .

##### **Storage**

Store at -20°C or lower. Aliquot to avoid repeated freezing and thawing.

##### **Precautions**

ESR2 Antibody (monoclonal) (M01) is for research use only and not for use in diagnostic or therapeutic procedures.

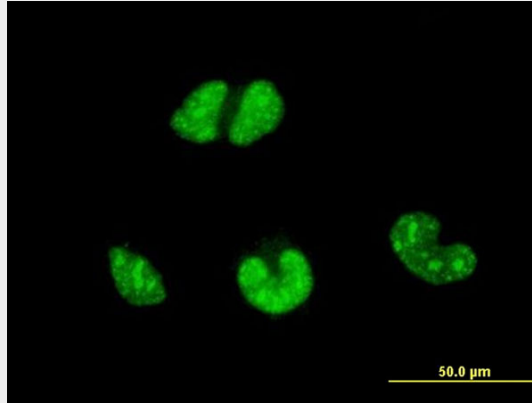
#### **ESR2 Antibody (monoclonal) (M01) - Protocols**

Provided below are standard protocols that you may find useful for product applications.

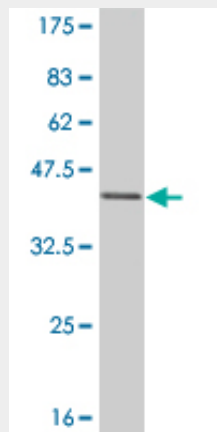
- [Western Blot](#)
- [Blocking Peptides](#)
- [Dot Blot](#)

- [Immunohistochemistry](#)
- [Immunofluorescence](#)
- [Immunoprecipitation](#)
- [Flow Cytometry](#)
- [Cell Culture](#)

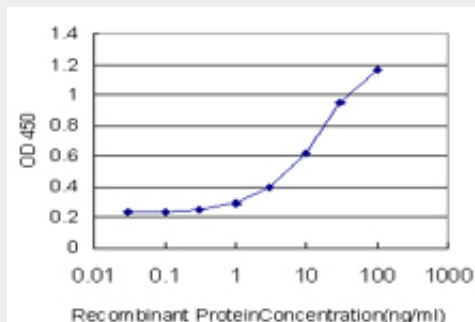
**ESR2 Antibody (monoclonal) (M01) - Images**



Immunofluorescence of monoclonal antibody to ESR2 on HeLa cell . [antibody concentration 10 ug/ml]



Antibody Reactive Against Recombinant Protein. Western Blot detection against Immunogen (36.74 KDa) .



Detection limit for recombinant GST tagged ESR2 is approximately 0.3ng/ml as a capture antibody.

**ESR2 Antibody (monoclonal) (M01) - Background**

This gene encodes a member of the family of estrogen receptors and superfamily of nuclear receptor transcription factors. The gene product contains an N-terminal DNA binding domain and C-terminal ligand binding domain and is localized to the nucleus, cytoplasm, and mitochondria. Upon binding to 17beta-estradiol or related ligands, the encoded protein forms homo- or hetero-dimers that interact with specific DNA sequences to activate transcription. Some isoforms dominantly inhibit the activity of other estrogen receptor family members. Several alternatively spliced transcript variants of this gene have been described, but the full-length nature of some of these variants has not been fully characterized.

### **ESR2 Antibody (monoclonal) (M01) - References**

A genetic association study of maternal and fetal candidate genes that predispose to preterm prelabor rupture of membranes (PROM). Romero R, et al. Am J Obstet Gynecol, 2010 Jul 29. PMID 20673868. Haplotypes of estrogen receptor-beta and risk of non-small cell lung cancer in women. Paulus JK, et al. Lung Cancer, 2010 Jul 22. PMID 20655613. Maternal genes and facial clefts in offspring: a comprehensive search for genetic associations in two population-based cleft studies from Scandinavia. Jugessur A, et al. PLoS One, 2010 Jul 9. PMID 20634891. Comprehensive analysis of common genetic variation in 61 genes related to steroid hormone and insulin-like growth factor-I metabolism and breast cancer risk in the NCI breast and prostate cancer cohort consortium. Canzian F, et al. Hum Mol Genet, 2010 Oct 1. PMID 20634197. Variation at the NFATC2 Locus Increases the Risk of Thiazolidinedione-Induced Edema in the Diabetes REduction Assessment with ramipril and rosiglitazone Medication (DREAM) Study. Bailey SD, et al. Diabetes Care, 2010 Jul 13. PMID 20628086.