

**ERRFI1 Antibody (monoclonal) (M01)**

Mouse monoclonal antibody raised against a partial recombinant ERRFI1.

Catalog # AT1947a

**Specification**

---

**ERRFI1 Antibody (monoclonal) (M01) - Product Information**

Application	WB
Primary Accession	<a href="#">O9UJM3</a>
Other Accession	<a href="#">NM_018948</a>
Reactivity	Human
Host	mouse
Clonality	Monoclonal
Isotype	IgG1 Kappa
Calculated MW	50560

**ERRFI1 Antibody (monoclonal) (M01) - Additional Information**

Gene ID 54206

**Other Names**

ERBB receptor feedback inhibitor 1, Mitogen-inducible gene 6 protein, MIG-6, ERRFI1, MIG6

**Target/Specificity**

ERRFI1 (NP\_061821, 111 a.a. ~ 220 a.a) partial recombinant protein with GST tag. MW of the GST tag alone is 26 KDa.

**Dilution**

WB~~1:500~1000

**Format**

Clear, colorless solution in phosphate buffered saline, pH 7.2 .

**Storage**

Store at -20°C or lower. Aliquot to avoid repeated freezing and thawing.

**Precautions**

ERRFI1 Antibody (monoclonal) (M01) is for research use only and not for use in diagnostic or therapeutic procedures.

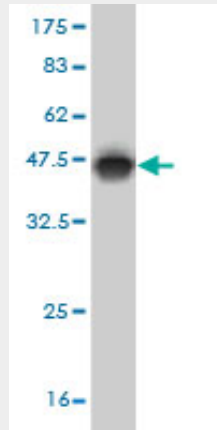
**ERRFI1 Antibody (monoclonal) (M01) - Protocols**

Provided below are standard protocols that you may find useful for product applications.

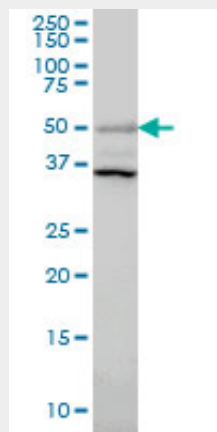
- [Western Blot](#)
- [Blocking Peptides](#)
- [Dot Blot](#)
- [Immunohistochemistry](#)

- [Immunofluorescence](#)
- [Immunoprecipitation](#)
- [Flow Cytometry](#)
- [Cell Culture](#)

### ERRFI1 Antibody (monoclonal) (M01) - Images



Antibody Reactive Against Recombinant Protein. Western Blot detection against Immunogen (37.84 KDa) .



ERRFI1 monoclonal antibody (M01), clone 2B9 Western Blot analysis of ERRFI1 expression in HepG2 ( (Cat # AT1947a )

### ERRFI1 Antibody (monoclonal) (M01) - Background

ERRFI1 is a cytoplasmic protein whose expression is upregulated with cell growth (Wick et al., 1995 [PubMed 7641805]). It shares significant homology with the protein product of rat gene-33, which is induced during cell stress and mediates cell signaling (Makkinje et al., 2000 [PubMed 10749885]; Fiorentino et al., 2000 [PubMed 11003669]).

### ERRFI1 Antibody (monoclonal) (M01) - References

A two-tiered mechanism of EGFR inhibition by RALT/MIG6 via kinase suppression and receptor degradation. Frosi Y, et al. J Cell Biol, 2010 May 3. PMID 20421427. Mig-6 controls EGFR trafficking and suppresses gliomagenesis. Ying H, et al. Proc Natl Acad Sci U S A, 2010 Apr 13. PMID 20351267. Multiple common variants for celiac disease influencing immune gene expression. Dubois PC, et al. Nat Genet, 2010 Apr. PMID 20190752. Mitogen-inducible gene-6 is a negative regulator of epidermal growth factor receptor signaling in hepatocytes and human hepatocellular carcinoma.

Reschke M, et al. Hepatology, 2010 Apr. PMID 20044804. Mutation of epidermal growth factor receptor is associated with MIG6 expression. Nagashima T, et al. FEBS J, 2009 Sep. PMID 19674104.