

## **ERH Antibody (monoclonal) (M14)**

Mouse monoclonal antibody raised against a full length recombinant ERH.

Catalog # AT1942a

### **Specification**

---

#### **ERH Antibody (monoclonal) (M14) - Product Information**

Application	IF, WB, IHC, E
Primary Accession	<a href="#">P84090</a>
Other Accession	<a href="#">BC014301</a>
Reactivity	Human
Host	mouse
Clonality	Monoclonal
Isotype	IgG1 Kappa
Calculated MW	12259

#### **ERH Antibody (monoclonal) (M14) - Additional Information**

**Gene ID** 2079

#### **Other Names**

Enhancer of rudimentary homolog, ERH

#### **Target/Specificity**

ERH (AAH14301, 1 a.a. ~ 104 a.a) full-length recombinant protein with GST tag. MW of the GST tag alone is 26 KDa.

#### **Dilution**

WB~~1:500~1000

#### **Format**

Clear, colorless solution in phosphate buffered saline, pH 7.2 .

#### **Storage**

Store at -20°C or lower. Aliquot to avoid repeated freezing and thawing.

#### **Precautions**

ERH Antibody (monoclonal) (M14) is for research use only and not for use in diagnostic or therapeutic procedures.

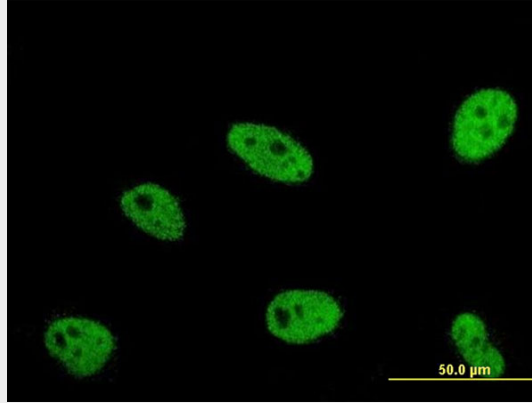
#### **ERH Antibody (monoclonal) (M14) - Protocols**

Provided below are standard protocols that you may find useful for product applications.

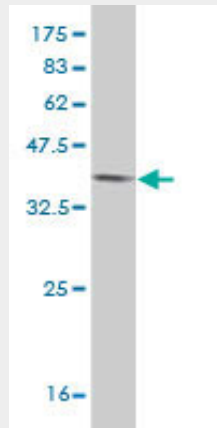
- [Western Blot](#)
- [Blocking Peptides](#)
- [Dot Blot](#)
- [Immunohistochemistry](#)

- [Immunofluorescence](#)
- [Immunoprecipitation](#)
- [Flow Cytometry](#)
- [Cell Culture](#)

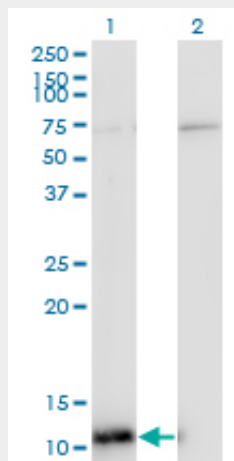
### ERH Antibody (monoclonal) (M14) - Images



Immunofluorescence of monoclonal antibody to ERH on HeLa cell . [antibody concentration 10 ug/ml]



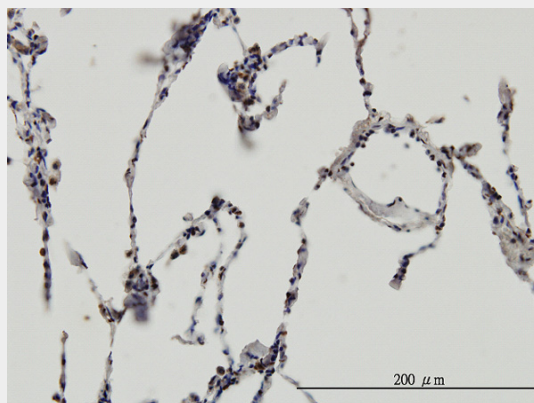
Antibody Reactive Against Recombinant Protein. Western Blot detection against Immunogen (37.18 KDa) .



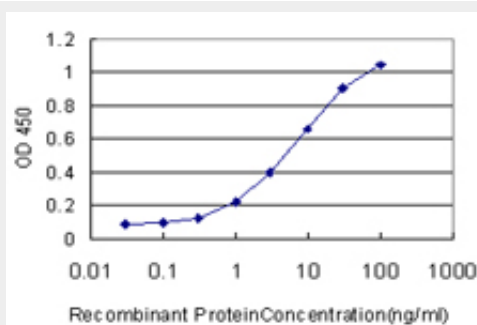
Western Blot analysis of ERH expression in transfected 293T cell line by ERH monoclonal antibody

(M14), clone 4A10.

Lane 1: ERH transfected lysate(12.3 KDa).  
 Lane 2: Non-transfected lysate.



Immunoperoxidase of monoclonal antibody to ERH on formalin-fixed paraffin-embedded human lung. [antibody concentration 3 ug/ml]



Detection limit for recombinant GST tagged ERH is approximately 0.3ng/ml as a capture antibody.

### ERH Antibody (monoclonal) (M14) - References

The metastasis efficiency modifier ribosomal RNA processing 1 homolog B (RRP1B) is a chromatin-associated factor. Crawford NP, et al. *J Biol Chem*, 2009 Oct 16. PMID 19710015. Enhancer of the rudimentary gene homologue (ERH) expression pattern in sporadic human breast cancer and normal breast tissue. Zafrakas M, et al. *BMC Cancer*, 2008 May 23. PMID 18500978. Ciz1, a p21 cip1/Waf1-interacting zinc finger protein and DNA replication factor, is a novel molecular partner for human enhancer of rudimentary homolog. Lukasik A, et al. *FEBS J*, 2008 Jan. PMID 18081865. Toward a confocal subcellular atlas of the human proteome. Barbe L, et al. *Mol Cell Proteomics*, 2008 Mar. PMID 18029348. A 1.55 Å resolution X-ray crystal structure of HEF2/ERH and insights into its transcriptional and cell-cycle interaction networks. Jin T, et al. *Proteins*, 2007 Aug 1. PMID 17444515.