

EPM2AIP1 Antibody (monoclonal) (M01)

Mouse monoclonal antibody raised against a partial recombinant EPM2AIP1.

Catalog # AT1928a

Specification

EPM2AIP1 Antibody (monoclonal) (M01) - Product Information

Application	WB, E
Primary Accession	O7L775
Other Accession	NM_014805
Reactivity	Human, Mouse, Rat
Host	mouse
Clonality	Monoclonal
Isotype	IgG2b Kappa
Calculated MW	70370

EPM2AIP1 Antibody (monoclonal) (M01) - Additional Information

Gene ID 9852

Other Names

EPM2A-interacting protein 1, Laforin-interacting protein, EPM2AIP1, KIAA0766

Target/Specificity

EPM2AIP1 (NP_055620, 508 a.a. ~ 606 a.a) partial recombinant protein with GST tag. MW of the GST tag alone is 26 KDa.

Dilution

WB~~1:500~1000

Format

Clear, colorless solution in phosphate buffered saline, pH 7.2 .

Storage

Store at -20°C or lower. Aliquot to avoid repeated freezing and thawing.

Precautions

EPM2AIP1 Antibody (monoclonal) (M01) is for research use only and not for use in diagnostic or therapeutic procedures.

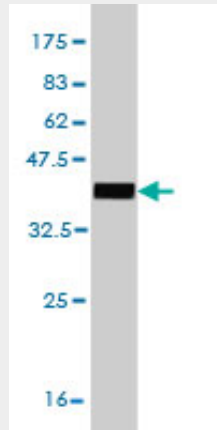
EPM2AIP1 Antibody (monoclonal) (M01) - Protocols

Provided below are standard protocols that you may find useful for product applications.

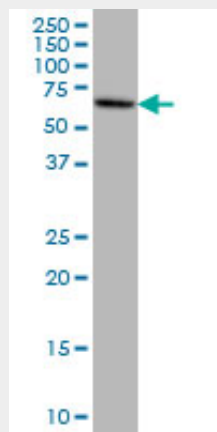
- [Western Blot](#)
- [Blocking Peptides](#)
- [Dot Blot](#)
- [Immunohistochemistry](#)

- [Immunofluorescence](#)
- [Immunoprecipitation](#)
- [Flow Cytometry](#)
- [Cell Culture](#)

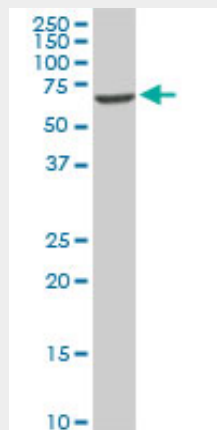
EPM2AIP1 Antibody (monoclonal) (M01) - Images



Antibody Reactive Against Recombinant Protein. Western Blot detection against Immunogen (36.63 KDa) .

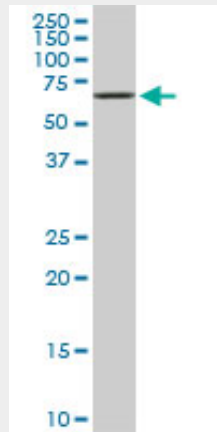


EPM2AIP1 monoclonal antibody (M01), clone 3H7 Western Blot analysis of EPM2AIP1 expression in HeLa ((Cat # AT1928a)

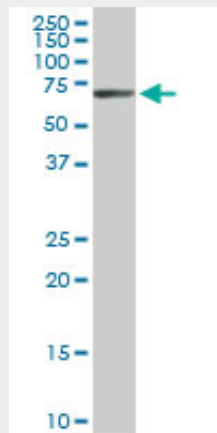


EPM2AIP1 monoclonal antibody (M01), clone 3H7. Western Blot analysis of EPM2AIP1 expression

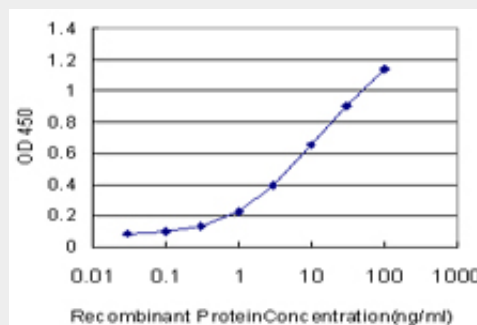
in PC-12((Cat # AT1928a)



EPM2AIP1 monoclonal antibody (M01), clone 3H7. Western Blot analysis of EPM2AIP1 expression in Raw 264.7((Cat # AT1928a)



EPM2AIP1 monoclonal antibody (M01), clone 3H7. Western Blot analysis of EPM2AIP1 expression in NIH/3T3((Cat # AT1928a)



Detection limit for recombinant GST tagged EPM2AIP1 is approximately 0.03ng/ml as a capture antibody.

EPM2AIP1 Antibody (monoclonal) (M01) - Background

The EPM2A gene, which encodes laforin, is mutated in an autosomal recessive form of adolescent progressive myoclonus epilepsy. The protein encoded by this gene binds to laforin, but its function is not known. This gene is intronless.

EPM2AIP1 Antibody (monoclonal) (M01) - References

1. Deficiency of a Glycogen Synthase-associated Protein, Epm2aip1, Causes Decreased Glycogen Synthesis and Hepatic Insulin Resistance. Turnbull J, Tiberia E, Pereira S, Zhao X, Pencea N, Wheeler AL, Yu WQ, Ivovic A, Naranian T, Israelian N, Draginov A, Piliguian M, Frankland PW, Wang P, Ackerley CA, Giacca A, Minassian BAJ Biol Chem. 2013 Nov 29;288(48):34627-37. doi: 10.1074/jbc.M113.483198. Epub 2013 Oct 18.