

EPHA6 Antibody (monoclonal) (M01)

Mouse monoclonal antibody raised against a partial recombinant EPHA6.

Catalog # AT1926a

Specification

EPHA6 Antibody (monoclonal) (M01) - Product Information

Application	WB
Primary Accession	O9UF33
Other Accession	XM_114973
Reactivity	Human
Host	mouse
Clonality	Monoclonal
Isotype	IgG1 kappa
Calculated MW	116379

EPHA6 Antibody (monoclonal) (M01) - Additional Information

Gene ID 285220

Other Names

Ephrin type-A receptor 6, EPH homology kinase 2, EHK-2, EPH-like kinase 12, EK12, EPHA6, EHK2, HEK12

Target/Specificity

EPHA6 (XP_114973, 613 a.a. ~ 712 a.a) partial recombinant protein with GST tag. MW of the GST tag alone is 26 KDa.

Dilution

WB~~1:500~1000

Format

Clear, colorless solution in phosphate buffered saline, pH 7.2 .

Storage

Store at -20°C or lower. Aliquot to avoid repeated freezing and thawing.

Precautions

EPHA6 Antibody (monoclonal) (M01) is for research use only and not for use in diagnostic or therapeutic procedures.

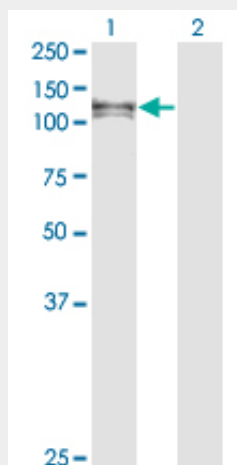
EPHA6 Antibody (monoclonal) (M01) - Protocols

Provided below are standard protocols that you may find useful for product applications.

- [Western Blot](#)
- [Blocking Peptides](#)
- [Dot Blot](#)

- [Immunohistochemistry](#)
- [Immunofluorescence](#)
- [Immunoprecipitation](#)
- [Flow Cytometry](#)
- [Cell Culture](#)

EPHA6 Antibody (monoclonal) (M01) - Images



Western Blot analysis of EPHA6 expression in transfected 293T cell line by EPHA6 monoclonal antibody (M01), clone 2H2.

Lane 1: EPHA6 transfected lysate(113.96 KDa).

Lane 2: Non-transfected lysate.