

EPDR1 Antibody (monoclonal) (M01)

Mouse monoclonal antibody raised against a full length recombinant EPDR1.

Catalog # AT1924a

Specification

EPDR1 Antibody (monoclonal) (M01) - Product Information

Application	IP, WB, E
Primary Accession	O9UM22
Other Accession	BC018299
Reactivity	Human
Host	Mouse
Clonality	Monoclonal
Isotype	IgG1 kappa
Calculated MW	25437

EPDR1 Antibody (monoclonal) (M01) - Additional Information

Gene ID 54749

Other Names

Mammalian ependymin-related protein 1, MERP-1, Upregulated in colorectal cancer gene 1 protein, EPDR1, MERP1, UCC1

Target/Specificity

EPDR1 (AAH18299, 38 a.a. ~ 224 a.a) full-length recombinant protein with GST tag. MW of the GST tag alone is 26 KDa.

Dilution

WB~~1:500~1000

Format

Clear, colorless solution in phosphate buffered saline, pH 7.2 .

Storage

Store at -20°C or lower. Aliquot to avoid repeated freezing and thawing.

Precautions

EPDR1 Antibody (monoclonal) (M01) is for research use only and not for use in diagnostic or therapeutic procedures.

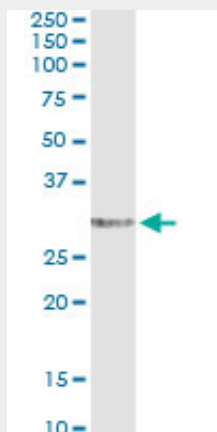
EPDR1 Antibody (monoclonal) (M01) - Protocols

Provided below are standard protocols that you may find useful for product applications.

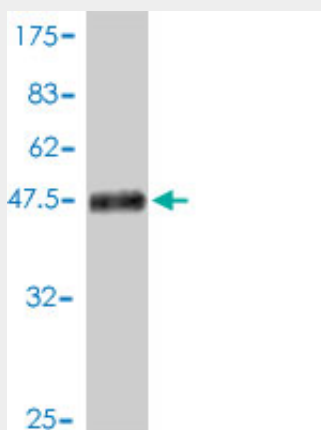
- [Western Blot](#)
- [Blocking Peptides](#)
- [Dot Blot](#)

- [Immunohistochemistry](#)
- [Immunofluorescence](#)
- [Immunoprecipitation](#)
- [Flow Cytometry](#)
- [Cell Culture](#)

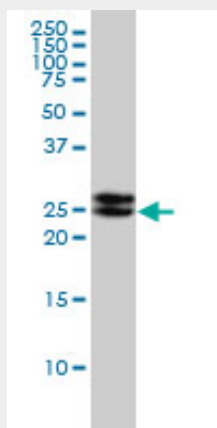
EPDR1 Antibody (monoclonal) (M01) - Images



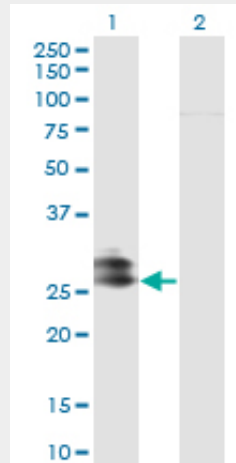
Immunoprecipitation of EPDR1 transfected lysate using anti-EPDR1 monoclonal antibody and Protein A Magnetic Bead ([U0007](#)), and immunoblotted with EPDR1 MaxPab rabbit polyclonal antibody.



Antibody Reactive Against Recombinant Protein. Western Blot detection against Immunogen (46.31 kDa) .

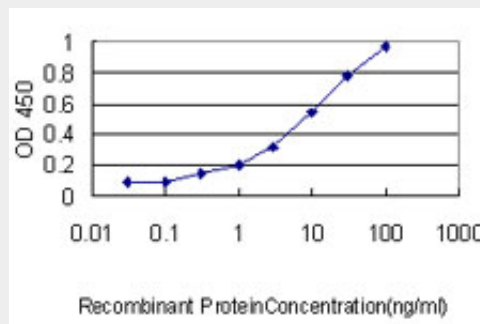


EPDR1 monoclonal antibody (M01), clone 1C1 Western Blot analysis of EPDR1 expression in Hela ((Cat # AT1924a)



Western Blot analysis of EPDR1 expression in transfected 293T cell line by EPDR1 monoclonal antibody (M01), clone 1C1.

Lane 1: EPDR1 transfected lysate(25.4 KDa).
Lane 2: Non-transfected lysate.



Detection limit for recombinant GST tagged EPDR1 is approximately 0.3ng/ml as a capture antibody.

EPDR1 Antibody (monoclonal) (M01) - Background

The protein encoded by this gene is a type II transmembrane protein and is similar to two families of cell adhesion molecules, the protocadherins and ependymins. This protein may play a role in calcium dependent cell adhesion.

EPDR1 Antibody (monoclonal) (M01) - References

Personalized smoking cessation: interactions between nicotine dose, dependence and quit-success genotype score. Rose JE, et al. Mol Med, 2010 Jul-Aug. PMID 20379614. Twenty bone-mineral-density loci identified by large-scale meta-analysis of genome-wide association studies. Rivadeneira F, et al. Nat Genet, 2009 Nov. PMID 19801982. Influence of multiple genetic polymorphisms on genitourinary morbidity after carbon ion radiotherapy for prostate cancer. Suga T, et al. Int J Radiat Oncol Biol Phys, 2008 Nov 1. PMID 18374504. A protein-protein interaction network for human inherited ataxias and disorders of Purkinje cell degeneration. Lim J, et al. Cell, 2006 May 19. PMID 16713569. Human chromosome 7: DNA sequence and biology. Scherer SW, et al. Science, 2003 May 2. PMID 12690205.