

EP300 Antibody (monoclonal) (M02)

Mouse monoclonal antibody raised against a partial recombinant EP300.

Catalog # AT1920a

Specification

EP300 Antibody (monoclonal) (M02) - Product Information

Application	IF, WB, IHC, E
Primary Accession	Q09472
Other Accession	NM_001429
Reactivity	Human
Host	Mouse
Clonality	Monoclonal
Isotype	IgG1
Calculated MW	264161

EP300 Antibody (monoclonal) (M02) - Additional Information

Gene ID 2033

Other Names

Histone acetyltransferase p300, p300 HAT, E1A-associated protein p300, EP300, P300

Target/Specificity

EP300 (NP_001420, 731 a.a. ~ 830 a.a) partial recombinant protein with GST tag. MW of the GST tag alone is 26 KDa.

Dilution

WB ~ 1:500 ~ 1000

Format

Clear, colorless solution in phosphate buffered saline, pH 7.2 .

Storage

Store at -20°C or lower. Aliquot to avoid repeated freezing and thawing.

Precautions

EP300 Antibody (monoclonal) (M02) is for research use only and not for use in diagnostic or therapeutic procedures.

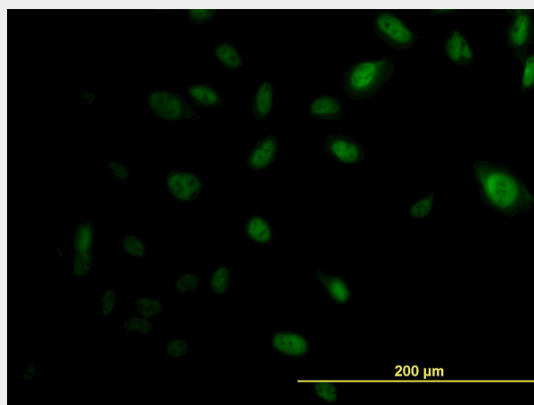
EP300 Antibody (monoclonal) (M02) - Protocols

Provided below are standard protocols that you may find useful for product applications.

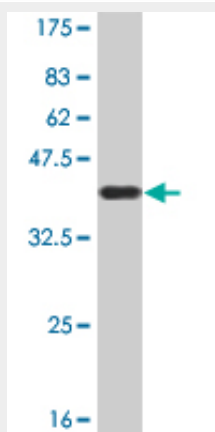
- [Western Blot](#)
- [Blocking Peptides](#)
- [Dot Blot](#)
- [Immunohistochemistry](#)

- [Immunofluorescence](#)
- [Immunoprecipitation](#)
- [Flow Cytometry](#)
- [Cell Culture](#)

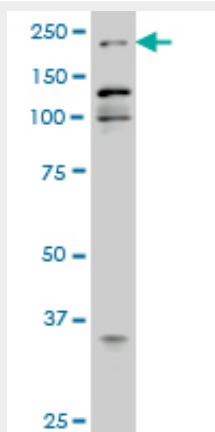
EP300 Antibody (monoclonal) (M02) - Images



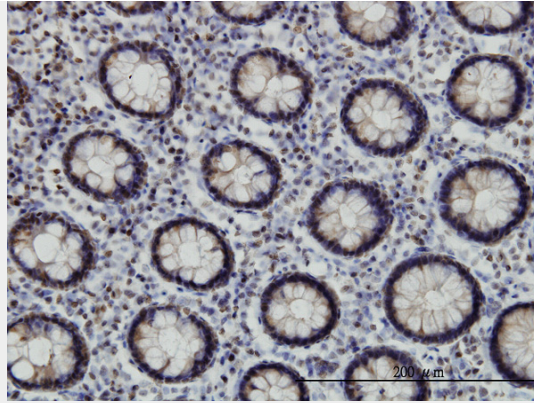
Immunofluorescence of monoclonal antibody to EP300 on HeLa cell. [antibody concentration 10 ug/ml]



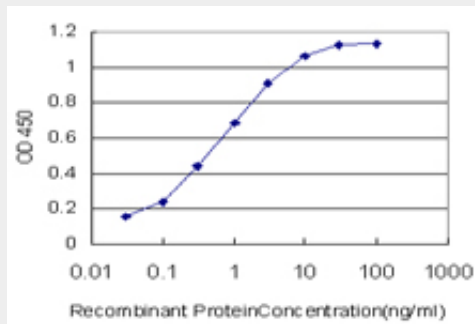
Antibody Reactive Against Recombinant Protein. Western Blot detection against Immunogen (36.74 KDa) .



EP300 monoclonal antibody (M02), clone 1D2 Western Blot analysis of EP300 expression in HeLa S3 NE ((Cat # AT1920a)



Immunoperoxidase of monoclonal antibody to EP300 on formalin-fixed paraffin-embedded human colon. [antibody concentration 3 ug/ml]



Detection limit for recombinant GST tagged EP300 is approximately 0.03ng/ml as a capture antibody.