

ENTPD5 Antibody (monoclonal) (M07)

Mouse monoclonal antibody raised against a partial recombinant ENTPD5.

Catalog # AT1916a

Specification

ENTPD5 Antibody (monoclonal) (M07) - Product Information

Application	WB, E
Primary Accession	O75356
Other Accession	NM_001249
Reactivity	Human
Host	Mouse
Clonality	Monoclonal
Isotype	IgG2b Kappa
Calculated MW	47517

ENTPD5 Antibody (monoclonal) (M07) - Additional Information

Gene ID 957

Other Names

Ectonucleoside triphosphate diphosphohydrolase 5, NTPDase 5, CD39 antigen-like 4, ER-UDPase, Guanosine-diphosphatase ENTPD5, GDPase ENTPD5, Nucleoside diphosphatase, Uridine-diphosphatase ENTPD5, UDPase ENTPD5, ENTPD5, CD39L4, PCPH

Target/Specificity

ENTPD5 (NP_001240, 319 a.a. ~ 400 a.a) partial recombinant protein with GST tag. MW of the GST tag alone is 26 KDa.

Dilution

WB~~1:500~1000

Format

Clear, colorless solution in phosphate buffered saline, pH 7.2 .

Storage

Store at -20°C or lower. Aliquot to avoid repeated freezing and thawing.

Precautions

ENTPD5 Antibody (monoclonal) (M07) is for research use only and not for use in diagnostic or therapeutic procedures.

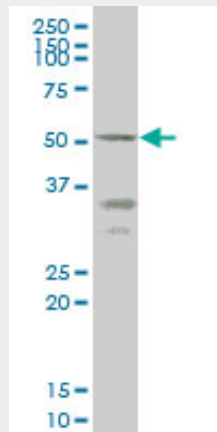
ENTPD5 Antibody (monoclonal) (M07) - Protocols

Provided below are standard protocols that you may find useful for product applications.

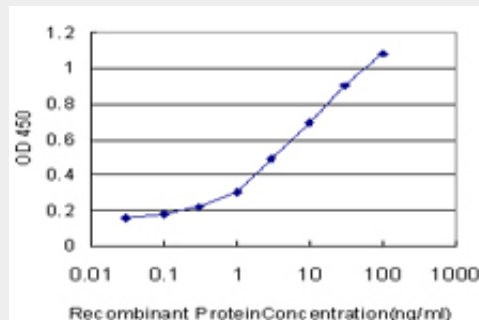
- [Western Blot](#)
- [Blocking Peptides](#)

- [Dot Blot](#)
- [Immunohistochemistry](#)
- [Immunofluorescence](#)
- [Immunoprecipitation](#)
- [Flow Cytometry](#)
- [Cell Culture](#)

ENTPD5 Antibody (monoclonal) (M07) - Images



ENTPD5 monoclonal antibody (M07), clone 4A5 Western Blot analysis of ENTPD5 expression in HepG2 (Cat # L019V1).



Detection limit for recombinant GST tagged ENTPD5 is approximately 0.3ng/ml as a capture antibody.

ENTPD5 Antibody (monoclonal) (M07) - Background

The protein encoded by this gene is similar to E-type nucleotidases (NTPases)/ecto-ATPase/apyrases. NTPases, such as CD39, mediate catabolism of extracellular nucleotides. ENTPD5 contains 4 apyrase-conserved regions which is characteristic of NTPases.

ENTPD5 Antibody (monoclonal) (M07) - References

Analysis of SNPs with an effect on gene expression identifies UBE2L3 and BCL3 as potential new risk genes for Crohn's disease. Fransen K, et al. Hum Mol Genet, 2010 Sep 1. PMID 20601676.PCPH/ENTPD5 expression confers to prostate cancer cells resistance against cisplatin-induced apoptosis through protein kinase Calpha-mediated Bcl-2 stabilization. Villar J, et al. Cancer Res, 2009 Jan 1. PMID 19117992.Toward a confocal subcellular atlas of the human proteome. Barbe L, et al. Mol Cell Proteomics, 2008 Mar. PMID 18029348.PCPH/ENTPD5 expression enhances the invasiveness of human prostate cancer cells by a protein kinase C delta-dependent mechanism. Villar J, et al. Cancer Res, 2007 Nov 15. PMID 18006831.PCPH expression is an early event in the development of testicular germ cell tumors. Regadera J, et al. Int J Oncol, 2006 Mar.

PMID 16465363.