

ENO3 Antibody (monoclonal) (M01)

Mouse monoclonal antibody raised against a partial recombinant ENO3.

Catalog # AT1911a

Specification

ENO3 Antibody (monoclonal) (M01) - Product Information

Application	IF, WB, IHC, E
Primary Accession	P13929
Other Accession	NM_001976
Reactivity	Human
Host	mouse
Clonality	Monoclonal
Isotype	IgG2a Kappa
Calculated MW	46987

ENO3 Antibody (monoclonal) (M01) - Additional Information

Gene ID 2027

Other Names

Beta-enolase, 2-phospho-D-glycerate hydro-lyase, Enolase 3, Muscle-specific enolase, MSE, Skeletal muscle enolase, ENO3

Target/Specificity

ENO3 (NP_001967, 228 a.a. ~ 277 a.a) partial recombinant protein with GST tag. MW of the GST tag alone is 26 KDa.

Dilution

WB~~1:500~1000

Format

Clear, colorless solution in phosphate buffered saline, pH 7.2 .

Storage

Store at -20°C or lower. Aliquot to avoid repeated freezing and thawing.

Precautions

ENO3 Antibody (monoclonal) (M01) is for research use only and not for use in diagnostic or therapeutic procedures.

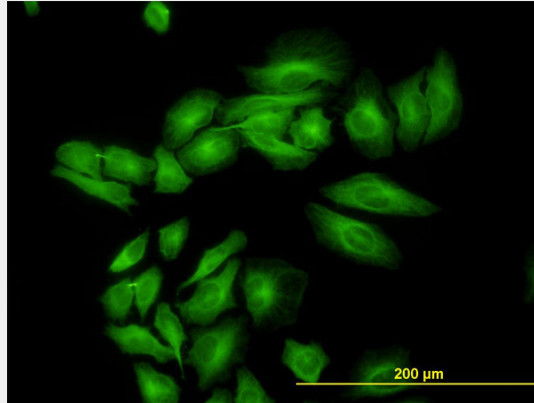
ENO3 Antibody (monoclonal) (M01) - Protocols

Provided below are standard protocols that you may find useful for product applications.

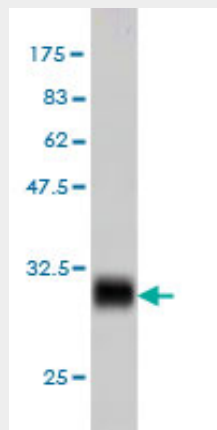
- [Western Blot](#)
- [Blocking Peptides](#)
- [Dot Blot](#)

- [Immunohistochemistry](#)
- [Immunofluorescence](#)
- [Immunoprecipitation](#)
- [Flow Cytometry](#)
- [Cell Culture](#)

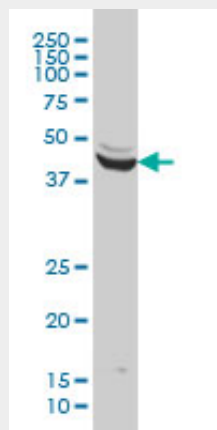
ENO3 Antibody (monoclonal) (M01) - Images



Immunofluorescence of monoclonal antibody to ENO3 on HeLa cell. [antibody concentration 10 ug/ml]

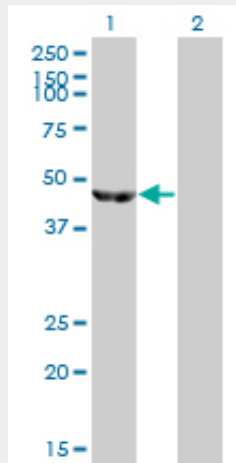


Antibody Reactive Against Recombinant Protein. Western Blot detection against Immunogen (31.24 KDa) .



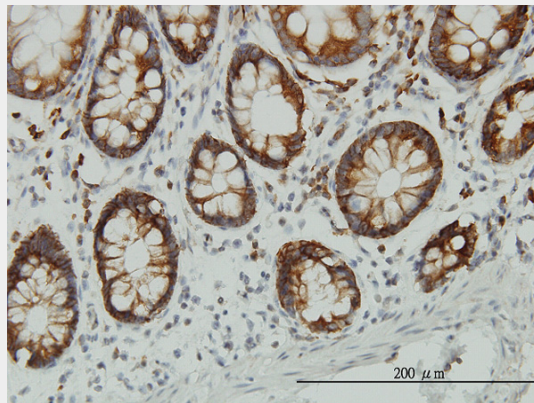
ENO3 monoclonal antibody (M01), clone 5D1 Western Blot analysis of ENO3 expression in HeLa (

(Cat # AT1911a)

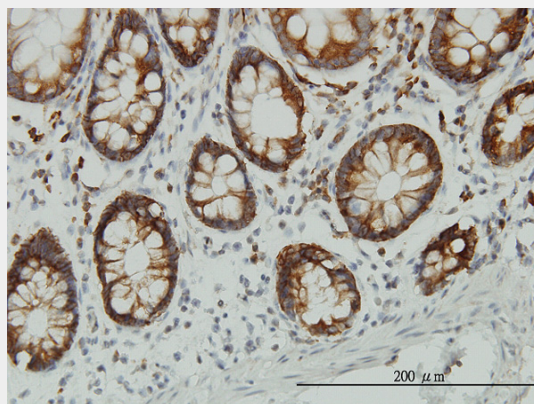


Western Blot analysis of ENO3 expression in transfected 293T cell line by ENO3 monoclonal antibody (M01), clone 5D1.

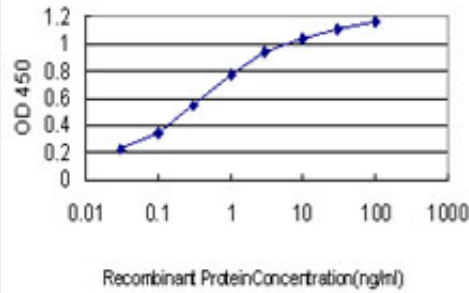
Lane 1: ENO3 transfected lysate(46.9 KDa).
Lane 2: Non-transfected lysate.



Immunoperoxidase of monoclonal antibody to ENO3 on formalin-fixed paraffin-embedded human stomach. [antibody concentration 1.5 ug/ml]



Immunoperoxidase of monoclonal antibody to ENO3 on formalin-fixed paraffin-embedded human colon. [antibody concentration 3 ug/ml]



Detection limit for recombinant GST tagged ENO3 is approximately 0.03ng/ml as a capture antibody.

ENO3 Antibody (monoclonal) (M01) - Background

This gene encodes one of the three enolase isoenzymes found in mammals. This isoenzyme is found in skeletal muscle cells in the adult where it may play a role in muscle development and regeneration. A switch from alpha enolase to beta enolase occurs in muscle tissue during development in rodents. Mutations in this gene have been associated with glycogen storage disease. Alternatively spliced transcript variants encoding different isoforms have been described.

ENO3 Antibody (monoclonal) (M01) - References

1. The time course of the adaptations of human muscle proteome to bed rest and the underlying mechanisms. Brocca L, Cannavino J, Coletto L, Biolo G, Sandri M, Bottinelli R, Pellegrino MA. *J Physiol*. 2012 Aug 6.
2. Functional analysis of beef tenderness. Guillemain N, Bonnet M, Jurie C, Picard B. *J Proteomics*. 2011 Aug 9. [Epub ahead of print]
3. Myomegalin is a novel A-kinase anchoring protein involved in the phosphorylation of cardiac myosin binding protein C. Uys GM, Ramburan A, Loos B, Kinnear CJ, Korkie LJ, Mouton J, Riedemann J, Moolman-Smook JC. *BMC Cell Biol*. 2011 May 10;12:18.
4. Proteome dynamics during contractile and metabolic differentiation of bovine foetal muscle. Chaze T, Meunier B, Chambon C, Jurie C, Picard B. *Animal* (2009) doi:10.1017/S17517311090043155.
5. Identification of alpha-Enolase as an Autoantigen in Lung Cancer: Its Overexpression Is Associated with Clinical Outcomes. Chang GC, Liu KJ, Hsieh CL, Hu TS, Charoenfuprasert S, Liu HK, Luh KT, Hsu LH, Wu CW, Ting CC, Chen CY, Chen KC, Yang TY, Chou TY, Wang WH, Whang-Peng J, Shih NY. *Clin Cancer Res*. 2006 Oct 1;12(19):5746-54.