

## **ENO2 Antibody (monoclonal) (M01)**

Mouse monoclonal antibody raised against a partial recombinant ENO2.

Catalog # AT1910a

### **Specification**

---

#### **ENO2 Antibody (monoclonal) (M01) - Product Information**

Application	WB, E
Primary Accession	<a href="#">P09104</a>
Other Accession	<a href="#">BC002745</a>
Reactivity	Human
Host	mouse
Clonality	Monoclonal
Isotype	IgG2a Kappa
Calculated MW	47269

#### **ENO2 Antibody (monoclonal) (M01) - Additional Information**

**Gene ID** 2026

##### **Other Names**

Gamma-enolase, 2-phospho-D-glycerate hydro-lyase, Enolase 2, Neural enolase, Neuron-specific enolase, NSE, ENO2

##### **Target/Specificity**

ENO2 (AAH02745, 325 a.a. ~ 434 a.a) partial recombinant protein with GST tag. MW of the GST tag alone is 26 KDa.

##### **Dilution**

WB~~1:500~1000

##### **Format**

Clear, colorless solution in phosphate buffered saline, pH 7.2 .

##### **Storage**

Store at -20°C or lower. Aliquot to avoid repeated freezing and thawing.

##### **Precautions**

ENO2 Antibody (monoclonal) (M01) is for research use only and not for use in diagnostic or therapeutic procedures.

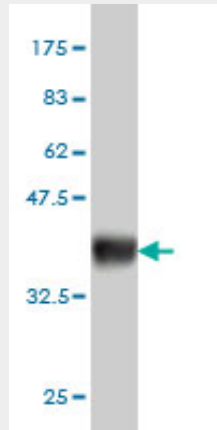
#### **ENO2 Antibody (monoclonal) (M01) - Protocols**

Provided below are standard protocols that you may find useful for product applications.

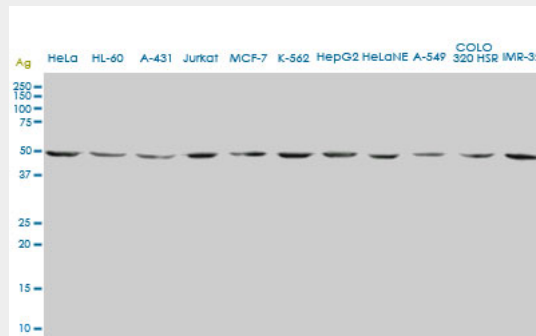
- [Western Blot](#)
- [Blocking Peptides](#)
- [Dot Blot](#)

- [Immunohistochemistry](#)
- [Immunofluorescence](#)
- [Immunoprecipitation](#)
- [Flow Cytometry](#)
- [Cell Culture](#)

**ENO2 Antibody (monoclonal) (M01) - Images**



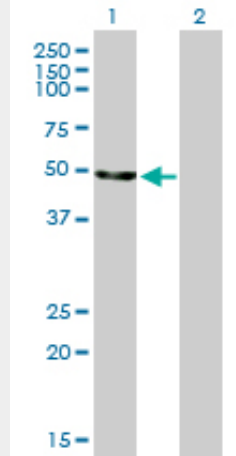
Antibody Reactive Against Recombinant Protein. Western Blot detection against Immunogen (37.84 KDa) .



ENO2 monoclonal antibody (M01), clone 1A3. Western Blot analysis of ENO2 expression in HeLa (Cat # AT1910a )

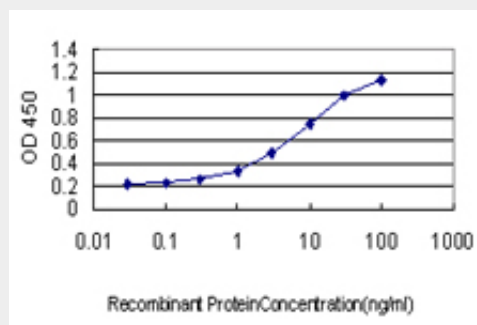


ENO2 monoclonal antibody (M01), clone 1A3. Western Blot analysis of ENO2 expression in different cell lines.



Western Blot analysis of ENO2 expression in transfected 293T cell line by ENO2 monoclonal antibody (M01), clone 1A3.

Lane 1: ENO2 transfected lysate(47.3 KDa).  
Lane 2: Non-transfected lysate.



Detection limit for recombinant GST tagged ENO2 is approximately 0.1ng/ml as a capture antibody.

### ENO2 Antibody (monoclonal) (M01) - Background

This gene encodes one of the three enolase isoenzymes found in mammals. This isoenzyme, a homodimer, is found in mature neurons and cells of neuronal origin. A switch from alpha enolase to gamma enolase occurs in neural tissue during development in rats and primates.

### ENO2 Antibody (monoclonal) (M01) - References

1. Identification of alpha-Enolase as an Autoantigen in Lung Cancer: Its Overexpression Is Associated with Clinical Outcomes. Chang GC, Liu KJ, Hsieh CL, Hu TS, Charoenfuprasert S, Liu HK, Luh KT, Hsu LH, Wu CW, Ting CC, Chen CY, Chen KC, Yang TY, Chou TY, Wang WH, Whang-Peng J, Shih NY. Clin Cancer Res. 2006 Oct 1;12(19):5746-54.