

**ENO1 Antibody (monoclonal) (M03)**

Mouse monoclonal antibody raised against a full length recombinant ENO1.

Catalog # AT1909a

**Specification**

---

**ENO1 Antibody (monoclonal) (M03) - Product Information**

Application	WB
Primary Accession	<a href="#">P06733</a>
Other Accession	<a href="#">BC022545</a>
Reactivity	Human, Mouse
Host	mouse
Clonality	Monoclonal
Isotype	IgG1 Kappa
Calculated MW	47169

**ENO1 Antibody (monoclonal) (M03) - Additional Information**

Gene ID 2023

**Other Names**

Alpha-enolase, 2-phospho-D-glycerate hydro-lyase, C-myc promoter-binding protein, Enolase 1, MBP-1, MPB-1, Non-neural enolase, NNE, Phosphopyruvate hydratase, Plasminogen-binding protein, ENO1, ENO1L1, MBPB1, MPB1

**Target/Specificity**

ENO1 (AAH22545, 1 a.a. ~ 434 a.a) full-length recombinant protein with GST tag. MW of the GST tag alone is 26 KDa.

**Dilution**

WB~~1:500~1000

**Format**

Clear, colorless solution in phosphate buffered saline, pH 7.2 .

**Storage**

Store at -20°C or lower. Aliquot to avoid repeated freezing and thawing.

**Precautions**

ENO1 Antibody (monoclonal) (M03) is for research use only and not for use in diagnostic or therapeutic procedures.

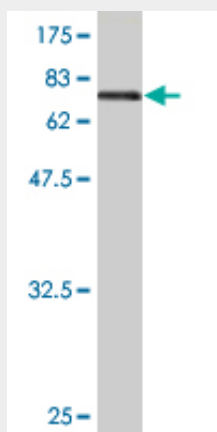
**ENO1 Antibody (monoclonal) (M03) - Protocols**

Provided below are standard protocols that you may find useful for product applications.

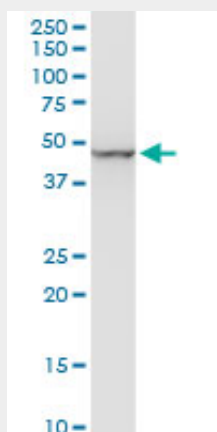
- [Western Blot](#)
- [Blocking Peptides](#)

- [Dot Blot](#)
- [Immunohistochemistry](#)
- [Immunofluorescence](#)
- [Immunoprecipitation](#)
- [Flow Cytometry](#)
- [Cell Culture](#)

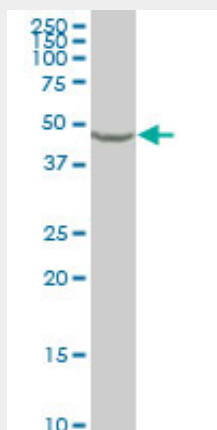
### ENO1 Antibody (monoclonal) (M03) - Images



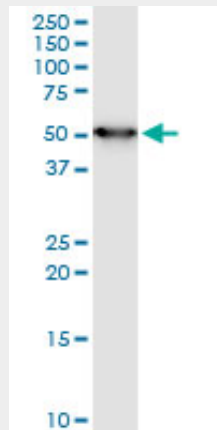
Antibody Reactive Against Recombinant Protein. Western Blot detection against Immunogen (73.48 KDa) .



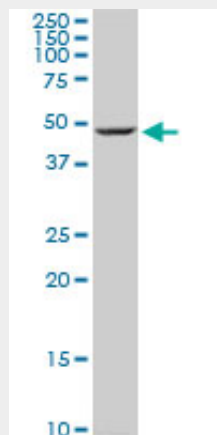
ENO1 monoclonal antibody (M03), clone 3C8. Western Blot analysis of ENO1 expression in human colon.



ENO1 monoclonal antibody (M03), clone 3C8. Western Blot analysis of ENO1 expression in Raw 264.7.



ENO1 monoclonal antibody (M03), clone 3C8. Western Blot analysis of ENO1 expression in MCF-7.



ENO1 monoclonal antibody (M03), clone 3C8. Western Blot analysis of ENO1 expression in NIH/3T3((Cat # AT1909a )

### **ENO1 Antibody (monoclonal) (M03) - Background**

This gene encodes one of three enolase isoenzymes found in mammals; it encodes alpha-enolase, a homodimeric soluble enzyme, and also encodes a shorter monomeric structural lens protein, tau-crystallin. The two proteins are made from the same message. The full length protein, the isoenzyme, is found in the cytoplasm. The shorter protein is produced from an alternative translation start, is localized to the nucleus, and has been found to bind to an element in the c-myc promoter. A pseudogene has been identified that is located on the other arm of the same chromosome.

### **ENO1 Antibody (monoclonal) (M03) - References**

SEDLIN forms homodimers: characterisation of SEDLIN mutations and their interactions with transcription factors MBP1, PITX1 and SF1. Jeyabalan J, et al. PLoS One, 2010 May 14. PMID 20498720. Identification of melanoma antigens using a Serological Proteome Approach (SERPA). Suzuki A, et al. Cancer Genomics Proteomics, 2010 Jan-Feb. PMID 20181627. MBP-1 suppresses growth and metastasis of gastric cancer cells through COX-2. Hsu KW, et al. Mol Biol Cell, 2009 Dec. PMID 19846662. Identification of ATP citrate lyase as a positive regulator of glycolytic function in glioblastomas. Beckner ME, et al. Int J Cancer, 2010 May 15. PMID 19795461. Cathepsin X cleaves the C-terminal dipeptide of alpha- and gamma-enolase and impairs survival and neurogenesis of neuronal cells. Obermajer N, et al. Int J Biochem Cell Biol, 2009 Aug-Sep. PMID 19433310.