

EMP3 Antibody (monoclonal) (M01)

Mouse monoclonal antibody raised against a full length recombinant EMP3.

Catalog # AT1903a

Specification

EMP3 Antibody (monoclonal) (M01) - Product Information

Application	WB, IHC
Primary Accession	P54852
Other Accession	BC009718
Reactivity	Human
Host	mouse
Clonality	Monoclonal
Isotype	IgG1 Kappa
Calculated MW	18429

EMP3 Antibody (monoclonal) (M01) - Additional Information**Gene ID** 2014**Other Names**

Epithelial membrane protein 3, EMP-3, Hematopoietic neural membrane protein 1, HNMP-1, Protein YMP, EMP3, YMP

Target/Specificity

EMP3 (AAH09718, 1 a.a. ~ 163 a.a) full-length recombinant protein with GST tag. MW of the GST tag alone is 26 KDa.

Dilution

WB~~1:500~1000

Format

Clear, colorless solution in phosphate buffered saline, pH 7.2 .

Storage

Store at -20°C or lower. Aliquot to avoid repeated freezing and thawing.

Precautions

EMP3 Antibody (monoclonal) (M01) is for research use only and not for use in diagnostic or therapeutic procedures.

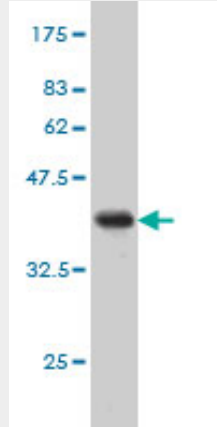
EMP3 Antibody (monoclonal) (M01) - Protocols

Provided below are standard protocols that you may find useful for product applications.

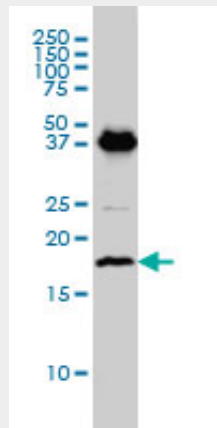
- [Western Blot](#)
- [Blocking Peptides](#)
- [Dot Blot](#)

- [Immunohistochemistry](#)
- [Immunofluorescence](#)
- [Immunoprecipitation](#)
- [Flow Cytometry](#)
- [Cell Culture](#)

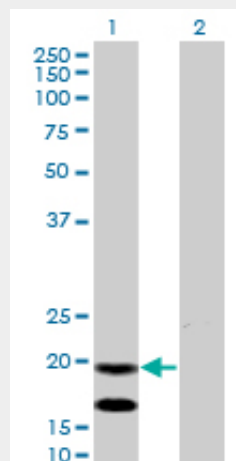
EMP3 Antibody (monoclonal) (M01) - Images



Antibody Reactive Against Recombinant Protein. Western Blot detection against Immunogen (43.67 KDa) .

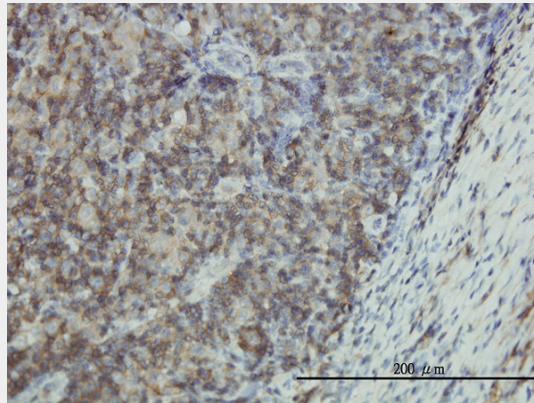


EMP3 monoclonal antibody (M01), clone 3D4 Western Blot analysis of EMP3 expression in C32 (Cat # AT1903a)



Western Blot analysis of EMP3 expression in transfected 293T cell line by EMP3 monoclonal antibody (M01), clone 3D4.

Lane 1: EMP3 transfected lysate(18.429 KDa).
Lane 2: Non-transfected lysate.



Immunoperoxidase of monoclonal antibody to EMP3 on formalin-fixed paraffin-embedded human lymphoma tissue. [antibody concentration 3 ug/ml]

EMP3 Antibody (monoclonal) (M01) - References

EMP3 overexpression in primary breast carcinomas is not associated with epigenetic aberrations. Zhou W, et al. J Korean Med Sci, 2009 Feb. PMID 19270820. EMP3 as a tumor suppressor gene for esophageal squamous cell carcinoma. Fumoto S, et al. Cancer Lett, 2009 Feb 8. PMID 18823699. DNA hypermethylation and aberrant expression of the EMP3 gene at 19q13.3 in Human Gliomas. Kunitz A, et al. Brain Pathol, 2007 Oct. PMID 17610521. EMP3 overexpression is associated with oligodendroglial tumors retaining chromosome arms 1p and 19q. Li KK, et al. Int J Cancer, 2007 Feb 15. PMID 17187361. Altered expression of CLC, DSG3, EMP3, S100A2, and SLPI in corneal epithelium from keratoconus patients. Nielsen K, et al. Cornea, 2005 Aug. PMID 16015083.