

ELF5 Antibody (monoclonal) (M01)

Mouse monoclonal antibody raised against a partial recombinant ELF5.

Catalog # AT1896a

Specification

ELF5 Antibody (monoclonal) (M01) - Product Information

Application	WB, E
Primary Accession	O9UKW6
Other Accession	NM_198381
Reactivity	Human
Host	mouse
Clonality	Monoclonal
Isotype	IgG2a Kappa
Calculated MW	31263

ELF5 Antibody (monoclonal) (M01) - Additional Information

Gene ID 2001

Other Names

ETS-related transcription factor Elf-5, E74-like factor 5, Epithelium-restricted ESE-1-related Ets factor, Epithelium-specific Ets transcription factor 2, ESE-2, ELF5, ESE2

Target/Specificity

ELF5 (NP_938195.1, 166 a.a. ~ 263 a.a) partial recombinant protein with GST tag. MW of the GST tag alone is 26 KDa.

Dilution

WB~~1:500~1000

Format

Clear, colorless solution in phosphate buffered saline, pH 7.2 .

Storage

Store at -20°C or lower. Aliquot to avoid repeated freezing and thawing.

Precautions

ELF5 Antibody (monoclonal) (M01) is for research use only and not for use in diagnostic or therapeutic procedures.

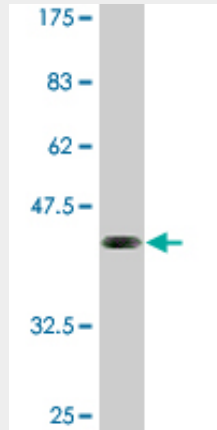
ELF5 Antibody (monoclonal) (M01) - Protocols

Provided below are standard protocols that you may find useful for product applications.

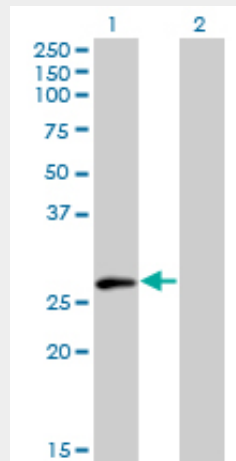
- [Western Blot](#)
- [Blocking Peptides](#)
- [Dot Blot](#)

- [Immunohistochemistry](#)
- [Immunofluorescence](#)
- [Immunoprecipitation](#)
- [Flow Cytometry](#)
- [Cell Culture](#)

ELF5 Antibody (monoclonal) (M01) - Images



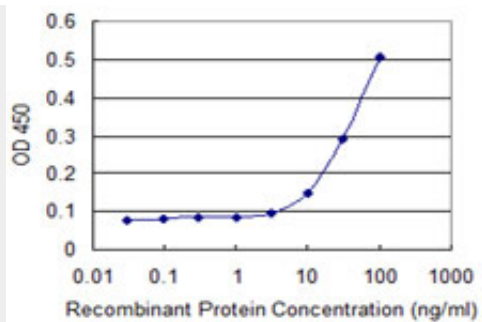
Antibody Reactive Against Recombinant Protein. Western Blot detection against Immunogen (36.52 KDa) .



Western Blot analysis of ELF5 expression in transfected 293T cell line by ELF5 monoclonal antibody (M01), clone 3D10.

Lane 1: ELF5 transfected lysate(30.1 KDa).

Lane 2: Non-transfected lysate.



Detection limit for recombinant GST tagged ELF5 is 3 ng/ml as a capture antibody.