

EIF4E2 Antibody (monoclonal) (M01)

Mouse monoclonal antibody raised against a full length recombinant EIF4E2.

Catalog # AT1877a

Specification

EIF4E2 Antibody (monoclonal) (M01) - Product Information

Application	IF, WB, IHC
Primary Accession	O60573
Other Accession	BC005392
Reactivity	Human
Host	mouse
Clonality	Monoclonal
Isotype	IgG1 Kappa
Calculated MW	28362

EIF4E2 Antibody (monoclonal) (M01) - Additional Information

Gene ID 9470

Other Names

Eukaryotic translation initiation factor 4E type 2, eIF-4E type 2, eIF4E type 2, Eukaryotic translation initiation factor 4E homologous protein, Eukaryotic translation initiation factor 4E-like 3, eIF4E-like protein 4E-LP, mRNA cap-binding protein 4EHP, mRNA cap-binding protein type 3, EIF4E2, EIF4EL3

Target/Specificity

EIF4E2 (AAH05392, 1 a.a. ~ 245 a.a) full-length recombinant protein with GST tag. MW of the GST tag alone is 26 KDa.

Dilution

WB~~1:500~1000

Format

Clear, colorless solution in phosphate buffered saline, pH 7.2 .

Storage

Store at -20°C or lower. Aliquot to avoid repeated freezing and thawing.

Precautions

EIF4E2 Antibody (monoclonal) (M01) is for research use only and not for use in diagnostic or therapeutic procedures.

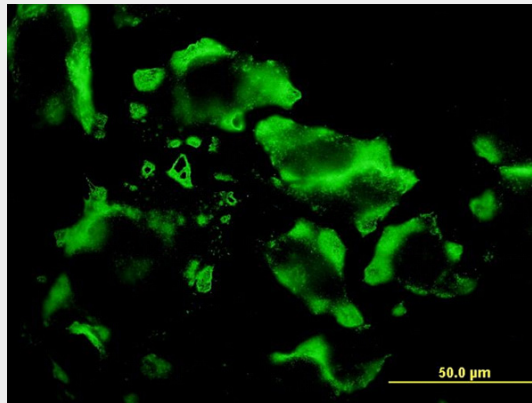
EIF4E2 Antibody (monoclonal) (M01) - Protocols

Provided below are standard protocols that you may find useful for product applications.

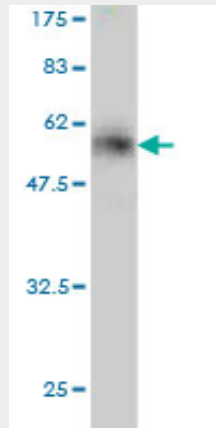
- [Western Blot](#)
- [Blocking Peptides](#)

- [Dot Blot](#)
- [Immunohistochemistry](#)
- [Immunofluorescence](#)
- [Immunoprecipitation](#)
- [Flow Cytometry](#)
- [Cell Culture](#)

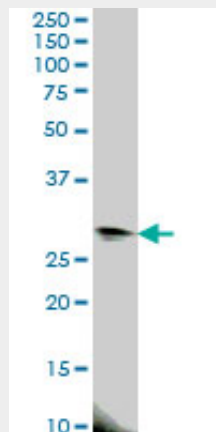
EIF4E2 Antibody (monoclonal) (M01) - Images



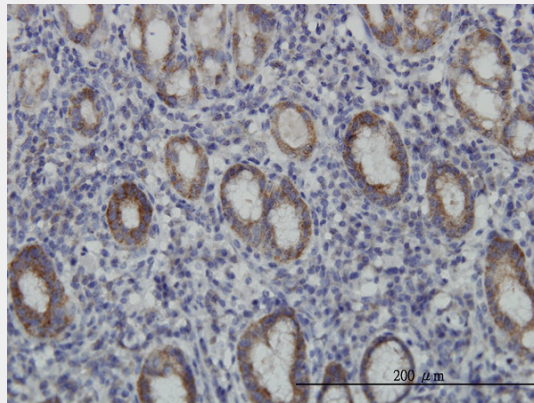
Immunofluorescence of monoclonal antibody to EIF4E2 on HeLa cell. [antibody concentration 10 ug/ml]



Antibody Reactive Against Recombinant Protein. Western Blot detection against Immunogen (52.69 KDa) .



EIF4E2 monoclonal antibody (M01), clone 4G10 Western Blot analysis of EIF4E2 expression in HeLa ((Cat # AT1877a)



Immunoperoxidase of monoclonal antibody to EIF4E2 on formalin-fixed paraffin-embedded human stomach. [antibody concentration 3 ug/ml]

EIF4E2 Antibody (monoclonal) (M01) - References

Personalized smoking cessation: interactions between nicotine dose, dependence and quit-success genotype score. Rose JE, et al. Mol Med, 2010 Jul-Aug. PMID 20379614. Defining the human deubiquitinating enzyme interaction landscape. Sowa ME, et al. Cell, 2009 Jul 23. PMID 19615732. An empirical framework for binary interactome mapping. Venkatesan K, et al. Nat Methods, 2009 Jan. PMID 19060904. Weak binding affinity of human 4EHP for mRNA cap analogs. Zuberek J, et al. RNA, 2007 May. PMID 17369309. Structures of the human eIF4E homologous protein, h4EHP, in its m7GTP-bound and unliganded forms. Rosettani P, et al. J Mol Biol, 2007 May 4. PMID 17368478.