

EIF2S1 Antibody (monoclonal) (M01)

Mouse monoclonal antibody raised against a full length recombinant EIF2S1.

Catalog # AT1875a

Specification

EIF2S1 Antibody (monoclonal) (M01) - Product Information

| | |
|-------------------|--------------------------|
| Application | IF, WB, E |
| Primary Accession | P05198 |
| Other Accession | BC002513 |
| Reactivity | Human |
| Host | mouse |
| Clonality | Monoclonal |
| Isotype | IgG1 kappa |
| Calculated MW | 36112 |

EIF2S1 Antibody (monoclonal) (M01) - Additional Information

Gene ID 1965

Other Names

Eukaryotic translation initiation factor 2 subunit 1, Eukaryotic translation initiation factor 2 subunit alpha, eIF-2-alpha, eIF-2A, eIF-2alpha, EIF2S1, EIF2A

Target/Specificity

EIF2S1 (AAH02513.1, 1 a.a. ~ 315 a.a) full-length recombinant protein with GST tag. MW of the GST tag alone is 26 KDa.

Dilution

WB~~1:500~1000

Format

Clear, colorless solution in phosphate buffered saline, pH 7.2 .

Storage

Store at -20°C or lower. Aliquot to avoid repeated freezing and thawing.

Precautions

EIF2S1 Antibody (monoclonal) (M01) is for research use only and not for use in diagnostic or therapeutic procedures.

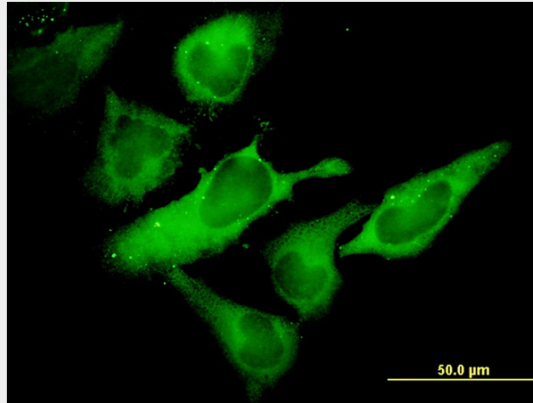
EIF2S1 Antibody (monoclonal) (M01) - Protocols

Provided below are standard protocols that you may find useful for product applications.

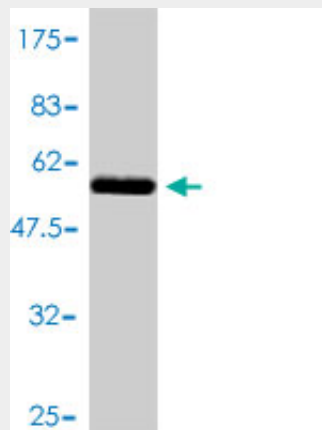
- [Western Blot](#)
- [Blocking Peptides](#)
- [Dot Blot](#)

- [Immunohistochemistry](#)
- [Immunofluorescence](#)
- [Immunoprecipitation](#)
- [Flow Cytometry](#)
- [Cell Culture](#)

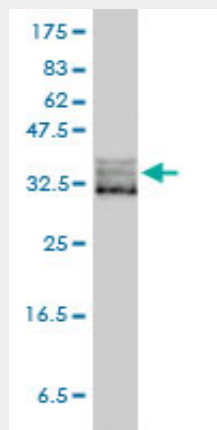
EIF2S1 Antibody (monoclonal) (M01) - Images



Immunofluorescence of monoclonal antibody to EIF2S1 on HeLa cell. [antibody concentration 10 ug/ml]

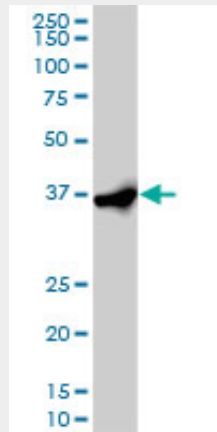


Antibody Reactive Against Recombinant Protein. Western Blot detection against Immunogen (60.39 KDa) .

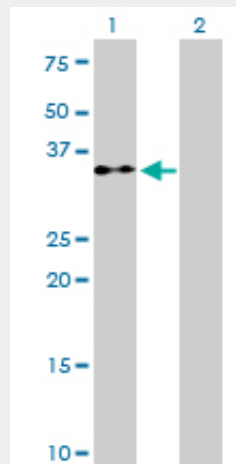


EIF2S1 monoclonal antibody (M01), clone 3H12-C11 Western Blot analysis of EIF2S1 expression in

HeLa ((Cat # AT1875a)

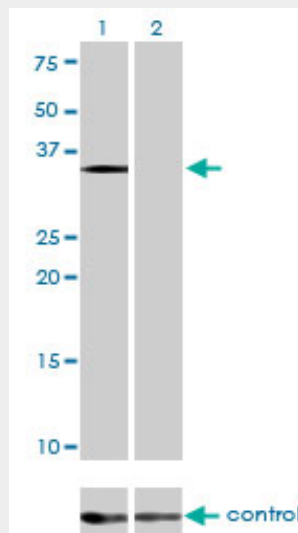


EIF2S1 monoclonal antibody (M01), clone 3H12-C11. Western Blot analysis of EIF2S1 expression in HeLa S3 NE ((Cat # AT1875a)

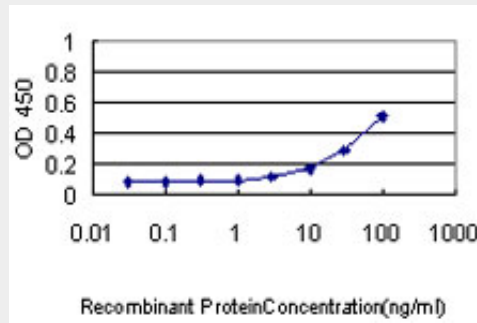


Western Blot analysis of EIF2S1 expression in transfected 293T cell line by EIF2S1 monoclonal antibody (M01), clone 3H12-C11.

Lane 1: EIF2S1 transfected lysate(36.1 KDa).
Lane 2: Non-transfected lysate.



Western blot analysis of EIF2S1 over-expressed 293 cell line, cotransfected with EIF2S1 Validated Chimera RNAi ((Cat # AT1875a)



Detection limit for recombinant GST tagged EIF2S1 is approximately 0.3ng/ml as a capture antibody.

EIF2S1 Antibody (monoclonal) (M01) - Background

The translation initiation factor EIF2 catalyzes the first regulated step of protein synthesis initiation, promoting the binding of the initiator tRNA to 40S ribosomal subunits. Binding occurs as a ternary complex of methionyl-tRNA, EIF2, and GTP. EIF2 is composed of 3 nonidentical subunits, the 36-kD EIF2-alpha subunit (EIF2S1), the 38-kD EIF2-beta subunit (EIF2S2; MIM 603908), and the 52-kD EIF2-gamma subunit (EIF2S3; MIM 300161). The rate of formation of the ternary complex is modulated by the phosphorylation state of EIF2-alpha (Ernst et al., 1987 [PubMed 2948954]).

EIF2S1 Antibody (monoclonal) (M01) - References

1.IGF2BP1 enhances HCV IRES-mediated translation initiation via the 3'UTR.Weinlich S, Huttelmaier S, Schierhorn A, Behrens SE, Ostareck-Lederer A, Ostareck DH.RNA. 2009 Aug;15(8):1528-42. Epub 2009 Jun 18.