

## **EHD4 Antibody (monoclonal) (M01)**

Mouse monoclonal antibody raised against a full length recombinant EHD4.

Catalog # AT1868a

### **Specification**

---

#### **EHD4 Antibody (monoclonal) (M01) - Product Information**

Application	IF, WB
Primary Accession	<a href="#">O9H223</a>
Other Accession	<a href="#">BC006287</a>
Reactivity	Human
Host	mouse
Clonality	Monoclonal
Isotype	IgG1 kappa
Calculated MW	61175

#### **EHD4 Antibody (monoclonal) (M01) - Additional Information**

**Gene ID** 30844

##### **Other Names**

EH domain-containing protein 4, Hepatocellular carcinoma-associated protein 10/11, PAST homolog 4, EHD4, HCA10, HCA11, PAST4

##### **Target/Specificity**

EHD4 (AAH06287, 1 a.a. ~ 541 a.a) full-length recombinant protein with GST tag. MW of the GST tag alone is 26 KDa.

##### **Dilution**

WB~~1:500~1000

##### **Format**

Clear, colorless solution in phosphate buffered saline, pH 7.2 .

##### **Storage**

Store at -20°C or lower. Aliquot to avoid repeated freezing and thawing.

##### **Precautions**

EHD4 Antibody (monoclonal) (M01) is for research use only and not for use in diagnostic or therapeutic procedures.

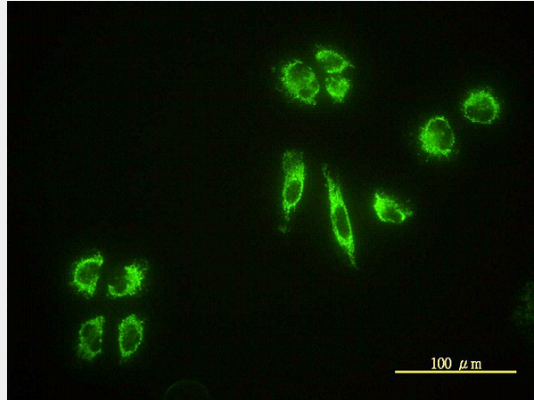
#### **EHD4 Antibody (monoclonal) (M01) - Protocols**

Provided below are standard protocols that you may find useful for product applications.

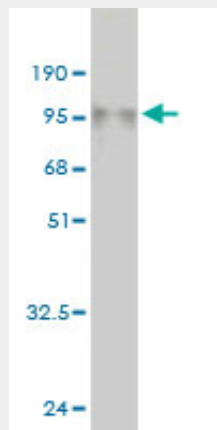
- [Western Blot](#)
- [Blocking Peptides](#)
- [Dot Blot](#)

- [Immunohistochemistry](#)
- [Immunofluorescence](#)
- [Immunoprecipitation](#)
- [Flow Cytometry](#)
- [Cell Culture](#)

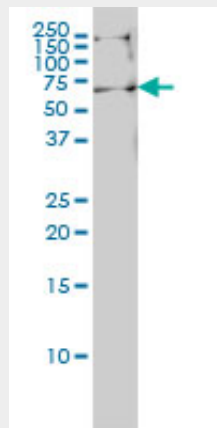
### EHD4 Antibody (monoclonal) (M01) - Images



Immunofluorescence of monoclonal antibody to EHD4 on HeLa cell. [antibody concentration 10 ug/ml]

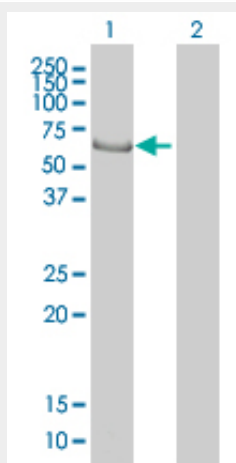


Antibody Reactive Against Recombinant Protein. Western Blot detection against Immunogen (85.25 KDa) .



EHD4 monoclonal antibody (M01), clone 1B8 Western Blot analysis of EHD4 expression in HeLa S3

NE ( (Cat # AT1868a )



Western Blot analysis of EHD4 expression in transfected 293T cell line by EHD4 monoclonal antibody (M01), clone 1B8.

Lane 1: EHD4 transfected lysate(61 KDa).

Lane 2: Non-transfected lysate.

#### **EHD4 Antibody (monoclonal) (M01) - References**

EH domain proteins regulate cardiac membrane protein targeting. Gudmundsson H, et al. *Circ Res*, 2010 Jul 9. PMID 20489164. A role for EHD4 in the regulation of early endosomal transport. Sharma M, et al. *Traffic*, 2008 Jun. PMID 18331452. Large-scale mapping of human protein-protein interactions by mass spectrometry. Ewing RM, et al. *Mol Syst Biol*, 2007. PMID 17353931. Immunoaffinity profiling of tyrosine phosphorylation in cancer cells. Rush J, et al. *Nat Biotechnol*, 2005 Jan. PMID 15592455. The status, quality, and expansion of the NIH full-length cDNA project: the Mammalian Gene Collection (MGC). Gerhard DS, et al. *Genome Res*, 2004 Oct. PMID 15489334.