

EHD2 Antibody (monoclonal) (M01)

Mouse monoclonal antibody raised against a partial recombinant EHD2.

Catalog # AT1866a

Specification

EHD2 Antibody (monoclonal) (M01) - Product Information

Application	IF, WB, E
Primary Accession	O9NZN4
Other Accession	NM_014601
Reactivity	Human
Host	mouse
Clonality	Monoclonal
Isotype	IgG1 Kappa
Calculated MW	61161

EHD2 Antibody (monoclonal) (M01) - Additional Information**Gene ID** 30846**Other Names**

EH domain-containing protein 2, PAST homolog 2, EHD2, PAST2

Target/Specificity

EHD2 (NP_055416, 365 a.a. ~ 427 a.a) partial recombinant protein with GST tag. MW of the GST tag alone is 26 KDa.

Dilution

WB~~1:500~1000

Format

Clear, colorless solution in phosphate buffered saline, pH 7.2 .

Storage

Store at -20°C or lower. Aliquot to avoid repeated freezing and thawing.

Precautions

EHD2 Antibody (monoclonal) (M01) is for research use only and not for use in diagnostic or therapeutic procedures.

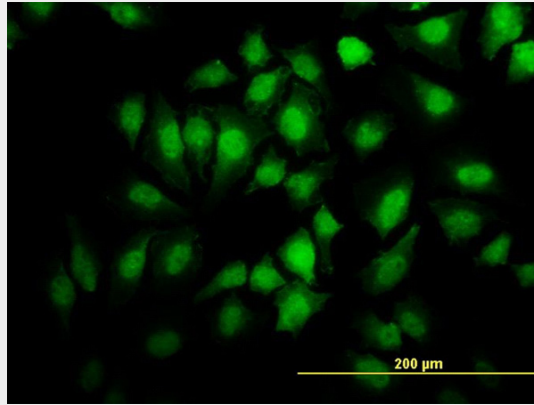
EHD2 Antibody (monoclonal) (M01) - Protocols

Provided below are standard protocols that you may find useful for product applications.

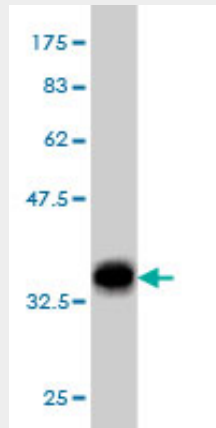
- [Western Blot](#)
- [Blocking Peptides](#)
- [Dot Blot](#)
- [Immunohistochemistry](#)

- [Immunofluorescence](#)
- [Immunoprecipitation](#)
- [Flow Cytometry](#)
- [Cell Culture](#)

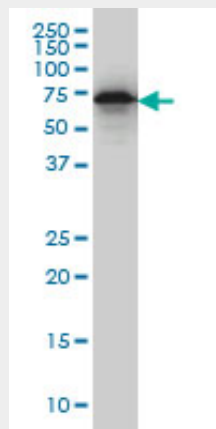
EHD2 Antibody (monoclonal) (M01) - Images



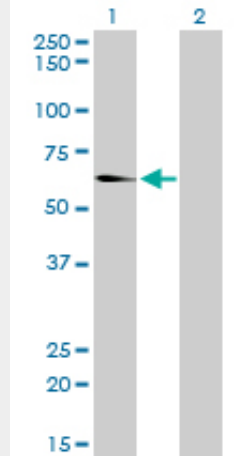
Immunofluorescence of monoclonal antibody to EHD2 on HeLa cell. [antibody concentration 10 ug/ml]



Antibody Reactive Against Recombinant Protein. Western Blot detection against Immunogen (32.67 KDa) .

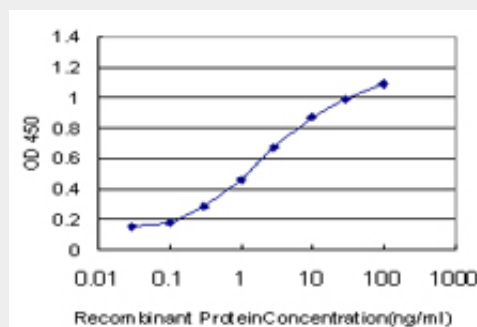


EHD2 monoclonal antibody (M01), clone 2D8 Western Blot analysis of EHD2 expression in HeLa (Cat # AT1866a)



Western Blot analysis of EHD2 expression in transfected 293T cell line by EHD2 monoclonal antibody (M01), clone 2D8.

Lane 1: EHD2 transfected lysate(61.2 KDa).
Lane 2: Non-transfected lysate.



Detection limit for recombinant GST tagged EHD2 is approximately 0.03ng/ml as a capture antibody.

EHD2 Antibody (monoclonal) (M01) - Background

This gene encodes a member of the EH domain-containing protein family. These proteins are characterized by a C-terminal EF-hand domain, a nucleotide-binding consensus site at the N terminus and a bipartite nuclear localization signal. The encoded protein interacts with the actin cytoskeleton through an N-terminal domain and also binds to an EH domain-binding protein through the C-terminal EH domain. This interaction appears to connect clathrin-dependent endocytosis to actin, suggesting that this gene product participates in the endocytic pathway.

EHD2 Antibody (monoclonal) (M01) - References

EH domain proteins regulate cardiac membrane protein targeting. Gudmundsson H, et al. *Circ Res*, 2010 Jul 9. PMID 20489164. Architectural and mechanistic insights into an EHD ATPase involved in membrane remodelling. Daumke O, et al. *Nature*, 2007 Oct 3. PMID 17914359. Diversification of transcriptional modulation: large-scale identification and characterization of putative alternative promoters of human genes. Kimura K, et al. *Genome Res*, 2006 Jan. PMID 16344560. C-terminal EH-domain-containing proteins: consensus for a role in endocytic trafficking, EH? Naslavsky N, et al. *J Cell Sci*, 2005 Sep 15. PMID 16155252. The status, quality, and expansion of the NIH full-length cDNA project: the Mammalian Gene Collection (MGC). Gerhard DS, et al. *Genome Res*, 2004 Oct. PMID 15489334.