

EDN3 Antibody (monoclonal) (M01)

Mouse monoclonal antibody raised against a full length recombinant EDN3.

Catalog # AT1852a

Specification

EDN3 Antibody (monoclonal) (M01) - Product Information

Application	IP, WB, E
Primary Accession	P14138
Other Accession	BC008876
Reactivity	Human
Host	mouse
Clonality	Monoclonal
Isotype	IgG1 kappa
Calculated MW	25454

EDN3 Antibody (monoclonal) (M01) - Additional Information

Gene ID 1908

Other Names

Endothelin-3, ET-3, Preproendothelin-3, PPET3, EDN3

Target/Specificity

EDN3 (AAH08876, 1 a.a. ~ 238 a.a) full-length recombinant protein with GST tag. MW of the GST tag alone is 26 KDa.

Dilution

WB~~1:500~1000

Format

Clear, colorless solution in phosphate buffered saline, pH 7.2 .

Storage

Store at -20°C or lower. Aliquot to avoid repeated freezing and thawing.

Precautions

EDN3 Antibody (monoclonal) (M01) is for research use only and not for use in diagnostic or therapeutic procedures.

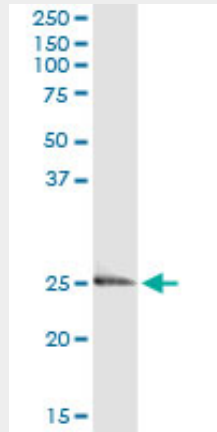
EDN3 Antibody (monoclonal) (M01) - Protocols

Provided below are standard protocols that you may find useful for product applications.

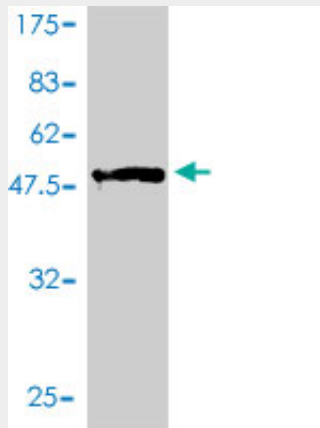
- [Western Blot](#)
- [Blocking Peptides](#)
- [Dot Blot](#)
- [Immunohistochemistry](#)

- [Immunofluorescence](#)
- [Immunoprecipitation](#)
- [Flow Cytometry](#)
- [Cell Culture](#)

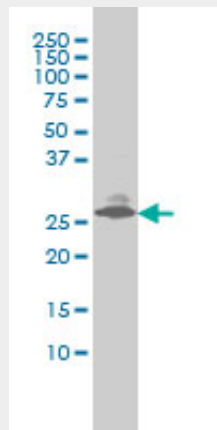
EDN3 Antibody (monoclonal) (M01) - Images



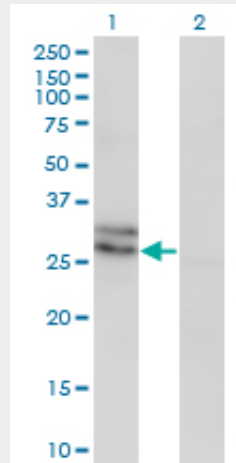
Immunoprecipitation of EDN3 transfected lysate using anti-EDN3 monoclonal antibody and Protein A Magnetic Bead ([U0007](#)), and immunoblotted with EDN3 MaxPab rabbit polyclonal antibody.



Antibody Reactive Against Recombinant Protein. Western Blot detection against Immunogen (51.92 KDa) .

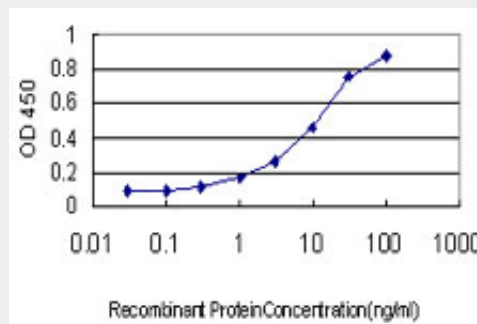


EDN3 monoclonal antibody (M01), clone 2A6-2A4 Western Blot analysis of EDN3 expression in LNCaP ((Cat # AT1852a)



Western Blot analysis of EDN3 expression in transfected 293T cell line by EDN3 monoclonal antibody (M01), clone 2A6-2A4.

Lane 1: EDN3 transfected lysate(25.5 KDa).
Lane 2: Non-transfected lysate.



Detection limit for recombinant GST tagged EDN3 is approximately 0.3ng/ml as a capture antibody.

EDN3 Antibody (monoclonal) (M01) - Background

The protein encoded by this gene is a member of the endothelin family. Endothelins are endothelium-derived vasoactive peptides involved in a variety of biological functions. The active form of this protein is a 21 amino acid peptide processed from the precursor protein. The active peptide is a ligand for endothelin receptor type B (EDNRB). The interaction of this endothelin with EDNRB is essential for development of neural crest-derived cell lineages, such as melanocytes and enteric neurons. Mutations in this gene and EDNRB have been associated with Hirschsprung disease (HSCR) and Waardenburg syndrome (WS), which are congenital disorders involving neural crest-derived cells. Four alternatively spliced transcript variants encoding three distinct isoforms have been observed.

EDN3 Antibody (monoclonal) (M01) - References

Variation at the NFATC2 Locus Increases the Risk of Thiazolidinedione-Induced Edema in the Diabetes REduction Assessment with ramipril and rosiglitazone Medication (DREAM) Study. Bailey SD, et al. Diabetes Care, 2010 Jul 13. PMID 20628086. The correlation of genetic markers with anatomoclinical and histopathological forms in Hirschsprung's disease. Broasc? V, et al. Rom J

Morphol Embryol, 2010. PMID 20495744. EDNRA variants associate with smooth muscle mRNA levels, cell proliferation rates, and cystic fibrosis pulmonary disease severity. Darrah R, et al. *Physiol Genomics*, 2010 Mar 3. PMID 20028935. New roles of EDNRB and EDN3 in the pathogenesis of Hirschsprung disease. S?nchez-Mej?as A, et al. *Genet Med*, 2010 Jan. PMID 20009762. Gene-centric association signals for lipids and apolipoproteins identified via the HumanCVD BeadChip. Talmud PJ, et al. *Am J Hum Genet*, 2009 Nov. PMID 19913121.