

## **EDN2 Antibody (monoclonal) (M01)**

Mouse monoclonal antibody raised against a full length recombinant EDN2.

Catalog # AT1851a

### **Specification**

---

#### **EDN2 Antibody (monoclonal) (M01) - Product Information**

Application	WB
Primary Accession	<a href="#">P20800</a>
Other Accession	<a href="#">BC034393</a>
Reactivity	Human
Host	mouse
Clonality	Monoclonal
Isotype	IgG2b kappa
Calculated MW	19960

#### **EDN2 Antibody (monoclonal) (M01) - Additional Information**

**Gene ID** 1907

#### **Other Names**

Endothelin-2, ET-2, Preproendothelin-2, PPET2, EDN2

#### **Target/Specificity**

EDN2 (AAH34393, 1 a.a. ~ 178 a.a) full-length recombinant protein with GST tag. MW of the GST tag alone is 26 KDa.

#### **Dilution**

WB~~1:500~1000

#### **Format**

Clear, colorless solution in phosphate buffered saline, pH 7.2 .

#### **Storage**

Store at -20°C or lower. Aliquot to avoid repeated freezing and thawing.

#### **Precautions**

EDN2 Antibody (monoclonal) (M01) is for research use only and not for use in diagnostic or therapeutic procedures.

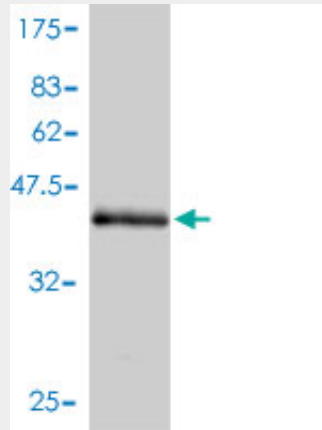
#### **EDN2 Antibody (monoclonal) (M01) - Protocols**

Provided below are standard protocols that you may find useful for product applications.

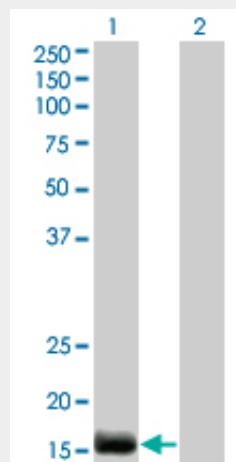
- [Western Blot](#)
- [Blocking Peptides](#)
- [Dot Blot](#)
- [Immunohistochemistry](#)

- [Immunofluorescence](#)
- [Immunoprecipitation](#)
- [Flow Cytometry](#)
- [Cell Culture](#)

### EDN2 Antibody (monoclonal) (M01) - Images



Antibody Reactive Against Recombinant Protein. Western Blot detection against Immunogen (45.32 KDa) .



Western Blot analysis of EDN2 expression in transfected 293T cell line by EDN2 monoclonal antibody (M01), clone 3B4-1C5.

Lane 1: EDN2 transfected lysate(20 KDa).  
Lane 2: Non-transfected lysate.

### EDN2 Antibody (monoclonal) (M01) - Background

This gene encodes a member of the endothelin protein family of secretory vasoconstrictive peptides. The preproprotein is processed to a short mature form which functions as a ligand for the endothelin receptors that initiate intracellular signaling events. This gene product is involved in a wide range of biological processes, such as hypertension and ovulation.

### EDN2 Antibody (monoclonal) (M01) - References

1. Estrogen and progesterone regulate expression of the endothelins in the rhesus macaque

endometrium.Keator CS, Mah K, Ohm L, Slayden OD.Hum Reprod. 2011 Apr 19. [Epub ahead of print]