

EDN1 Antibody (monoclonal) (M01)

Mouse monoclonal antibody raised against a partial recombinant EDN1.

Catalog # AT1850a

Specification

EDN1 Antibody (monoclonal) (M01) - Product Information

Application	IP, WB, E
Primary Accession	P05305
Other Accession	BC009720
Reactivity	Human
Host	mouse
Clonality	Monoclonal
Isotype	IgG2a kappa
Calculated MW	24425

EDN1 Antibody (monoclonal) (M01) - Additional Information**Gene ID** 1906**Other Names**

Endothelin-1, Preproendothelin-1, PPET1, Endothelin-1, ET-1, Big endothelin-1, EDN1

Target/Specificity

EDN1 (AAH09720, 113 a.a. ~ 212 a.a) partial recombinant protein with GST tag. MW of the GST tag alone is 26 KDa.

Dilution

WB~~1:500~1000

Format

Clear, colorless solution in phosphate buffered saline, pH 7.2 .

Storage

Store at -20°C or lower. Aliquot to avoid repeated freezing and thawing.

Precautions

EDN1 Antibody (monoclonal) (M01) is for research use only and not for use in diagnostic or therapeutic procedures.

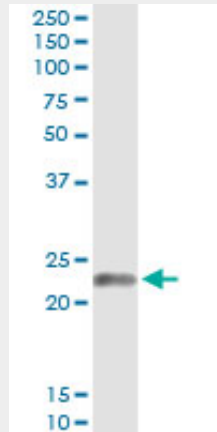
EDN1 Antibody (monoclonal) (M01) - Protocols

Provided below are standard protocols that you may find useful for product applications.

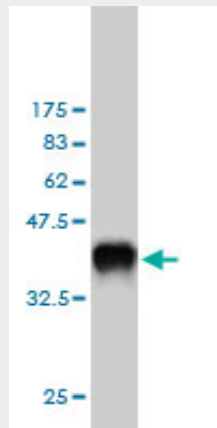
- [Western Blot](#)
- [Blocking Peptides](#)
- [Dot Blot](#)
- [Immunohistochemistry](#)

- [Immunofluorescence](#)
- [Immunoprecipitation](#)
- [Flow Cytometry](#)
- [Cell Culture](#)

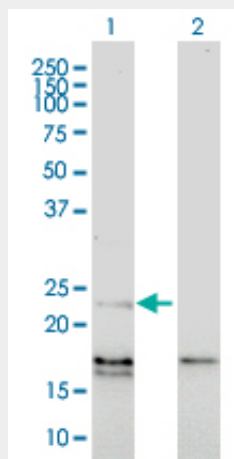
EDN1 Antibody (monoclonal) (M01) - Images



Immunoprecipitation of EDN1 transfected lysate using anti-EDN1 monoclonal antibody and Protein A Magnetic Bead ([U0007](#)), and immunoblotted with EDN1 MaxPab rabbit polyclonal antibody.

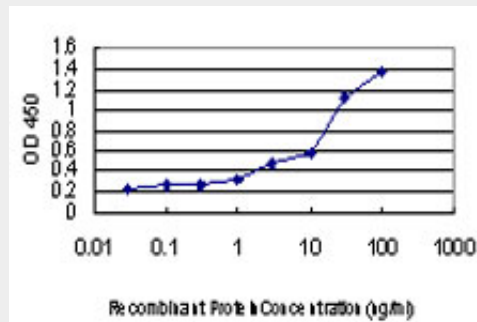


Antibody Reactive Against Recombinant Protein. Western Blot detection against Immunogen (36.63 KDa) .



Western Blot analysis of EDN1 expression in transfected 293T cell line by EDN1 monoclonal antibody (M01), clone 3D6.

Lane 1: EDN1 transfected lysate(24 KDa).
Lane 2: Non-transfected lysate.



Detection limit for recombinant GST tagged EDN1 is approximately 0.3ng/ml as a capture antibody.

EDN1 Antibody (monoclonal) (M01) - Background

The protein encoded by this gene is proteolytically processed to release a secreted peptide termed endothelin 1. This peptide is a potent vasoconstrictor and is produced by vascular endothelial cells. Endothelin 1 also can affect the central nervous system. Two transcript variants encoding different isoforms have been found for this gene.

EDN1 Antibody (monoclonal) (M01) - References

1.Calpain-6 is an endothelin-1 signaling dependent protective factor in chemoresistant osteosarcoma.Marion A, Dieudonne FX, Patino-Garcia A, Lecanda F, Marie PJ, Modrowski D.Int J Cancer. 2012 Jun 1;130(11):2514-25. doi: 10.1002/ijc.26246. Epub 2011 Aug 16.2.Endothelin type A and B receptors in the control of afferent and efferent arterioles in mice.Schildroth J, Rettig-Zimmermann J, Kalk P, Steege A, Fahling M, Sendeski M, Paliege A, Lai EY, Bachmann S, Persson PB, Hoher B, Patzak A.Nephrol Dial Transplant. 2010 Sep 2. [Epub ahead of print]3.Epithelial-to-Mesenchymal Transition and Resistance to Ingenol 3-Angelate, a Novel Protein Kinase C Modulator, in Colon Cancer Cells.Ghoul A, Serova M, Astorgues-Xerri L, Bieche I, Bousquet G, Varna M, Vidaud M, Phillips E, Weill S, Benhadji KA, Lokiec F, Cvitkovic E, Faivre S, Raymond E.Cancer Res. 2009 May 15;69(10):4260-9. Epub 2009 May 5.