

DVL3 Antibody (monoclonal) (M04)

Mouse monoclonal antibody raised against a partial recombinant DVL3.

Catalog # AT1832a

Specification

DVL3 Antibody (monoclonal) (M04) - Product Information

Application	IF, WB, E
Primary Accession	O92997
Other Accession	BC032459
Reactivity	Human
Host	Mouse
Clonality	Monoclonal
Isotype	IgG1 Kappa
Calculated MW	78055

DVL3 Antibody (monoclonal) (M04) - Additional Information**Gene ID** 1857**Other Names**

Segment polarity protein dishevelled homolog DVL-3, Dishevelled-3, DSH homolog 3, DVL3, KIAA0208

Target/Specificity

DVL3 (AAH32459, 1 a.a. ~ 100 a.a) partial recombinant protein with GST tag. MW of the GST tag alone is 26 KDa.

Dilution

WB~~1:500~1000

Format

Clear, colorless solution in phosphate buffered saline, pH 7.2 .

Storage

Store at -20°C or lower. Aliquot to avoid repeated freezing and thawing.

Precautions

DVL3 Antibody (monoclonal) (M04) is for research use only and not for use in diagnostic or therapeutic procedures.

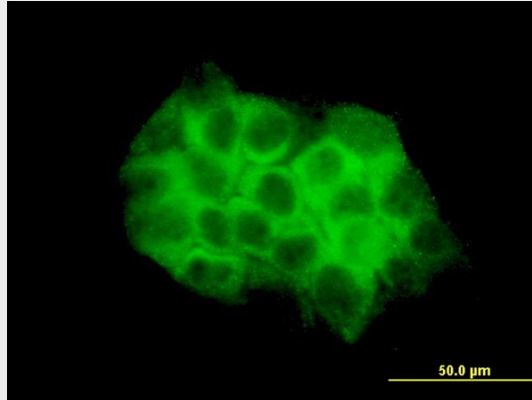
DVL3 Antibody (monoclonal) (M04) - Protocols

Provided below are standard protocols that you may find useful for product applications.

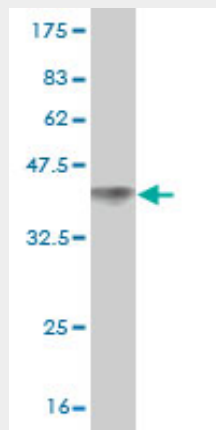
- [Western Blot](#)
- [Blocking Peptides](#)
- [Dot Blot](#)

- [Immunohistochemistry](#)
- [Immunofluorescence](#)
- [Immunoprecipitation](#)
- [Flow Cytometry](#)
- [Cell Culture](#)

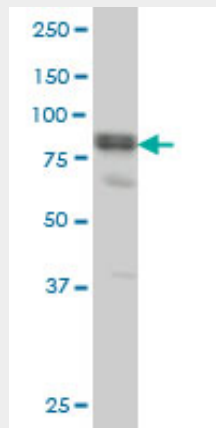
DVL3 Antibody (monoclonal) (M04) - Images



Immunofluorescence of monoclonal antibody to DVL3 on A-431 cell. [antibody concentration 10 ug/ml]

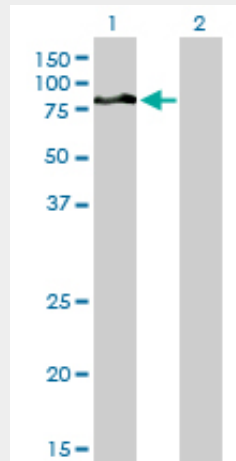


Antibody Reactive Against Recombinant Protein. Western Blot detection against Immunogen (36.63 KDa) .



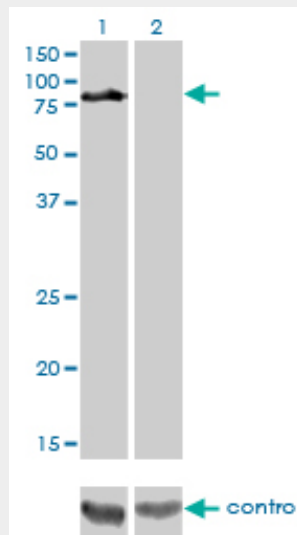
DVL3 monoclonal antibody (M04), clone 4H2 Western Blot analysis of DVL3 expression in A-431 (

(Cat # AT1832a)

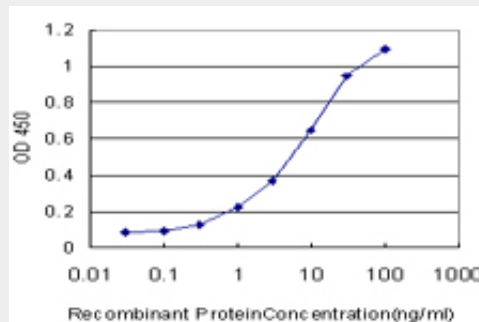


Western Blot analysis of DVL3 expression in transfected 293T cell line by DVL3 monoclonal antibody (M04), clone 4H2.

Lane 1: DVL3 transfected lysate(78 KDa).
 Lane 2: Non-transfected lysate.



Western blot analysis of DVL3 over-expressed 293 cell line, cotransfected with DVL3 Validated Chimera RNAi ((Cat # AT1832a)



Detection limit for recombinant GST tagged DVL3 is approximately 0.3ng/ml as a capture antibody.

DVL3 Antibody (monoclonal) (M04) - Background

This gene is a member of a multi-gene family which shares strong similarity with the *Drosophila* dishevelled gene, *dsh*. The *Drosophila* dishevelled gene encodes a cytoplasmic phosphoprotein that regulates cell proliferation.

DVL3 Antibody (monoclonal) (M04) - References

Helicobacter pylori-induced activation of beta-catenin involves low density lipoprotein receptor-related protein 6 and Dishevelled. Gnad T, et al. Mol Cancer, 2010 Feb 5. PMID 20137080. Inhibition of the Wnt/beta-catenin pathway by the WWOX tumor suppressor protein. Bouteille N, et al. Oncogene, 2009 Jul 16. PMID 19465938. Activation of the non-canonical Dvl-Rac1-JNK pathway by Frizzled homologue 10 in human synovial sarcoma. Fukukawa C, et al. Oncogene, 2009 Feb 26. PMID 19137009. Dishevelled family proteins are expressed in non-small cell lung cancer and function differentially on tumor progression. Wei Q, et al. Lung Cancer, 2008 Nov. PMID 18692936. Differential mediation of the Wnt canonical pathway by mammalian Dishevelleds-1, -2, and -3. Lee YN, et al. Cell Signal, 2008 Feb. PMID 18093802.