

DUSP6 Antibody (monoclonal) (M01)

Mouse monoclonal antibody raised against a full length recombinant DUSP6.

Catalog # AT1830a

Specification

DUSP6 Antibody (monoclonal) (M01) - Product Information

Application	IF, WB, IHC, E
Primary Accession	Q16828
Other Accession	BC003143
Reactivity	Human
Host	mouse
Clonality	Monoclonal
Isotype	IgG1 Kappa
Calculated MW	42320

DUSP6 Antibody (monoclonal) (M01) - Additional Information**Gene ID** 1848**Other Names**

Dual specificity protein phosphatase 6, Dual specificity protein phosphatase PYST1, Mitogen-activated protein kinase phosphatase 3, MAP kinase phosphatase 3, MKP-3, DUSP6, MKP3, PYST1

Target/Specificity

DUSP6 (AAH03143, 1 a.a. ~ 381 a.a) full-length recombinant protein with GST tag. MW of the GST tag alone is 26 KDa.

Dilution

WB~~1:500~1000

Format

Clear, colorless solution in phosphate buffered saline, pH 7.2 .

Storage

Store at -20°C or lower. Aliquot to avoid repeated freezing and thawing.

Precautions

DUSP6 Antibody (monoclonal) (M01) is for research use only and not for use in diagnostic or therapeutic procedures.

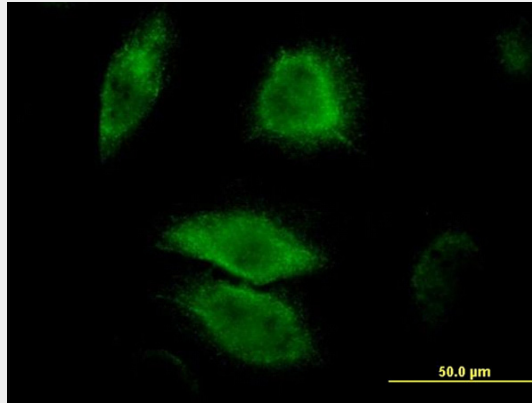
DUSP6 Antibody (monoclonal) (M01) - Protocols

Provided below are standard protocols that you may find useful for product applications.

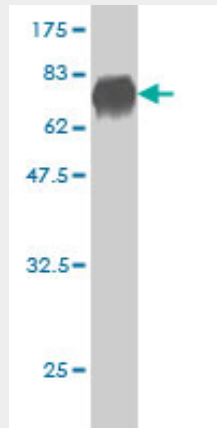
- [Western Blot](#)
- [Blocking Peptides](#)

- [Dot Blot](#)
- [Immunohistochemistry](#)
- [Immunofluorescence](#)
- [Immunoprecipitation](#)
- [Flow Cytometry](#)
- [Cell Culture](#)

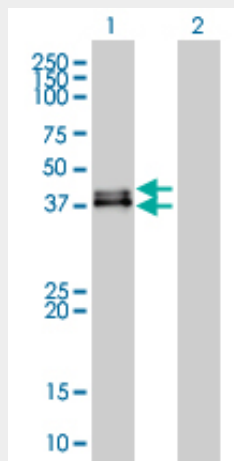
DUSP6 Antibody (monoclonal) (M01) - Images



Immunofluorescence of monoclonal antibody to DUSP6 on HeLa cell. [antibody concentration 10 ug/ml]

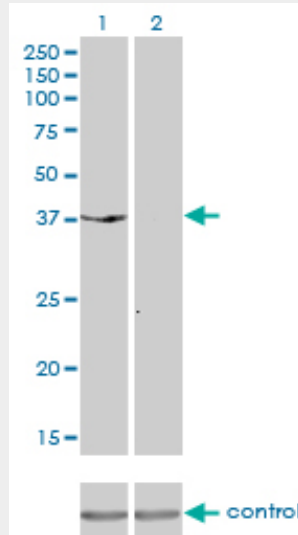


Antibody Reactive Against Recombinant Protein. Western Blot detection against Immunogen (67.65 KDa) .

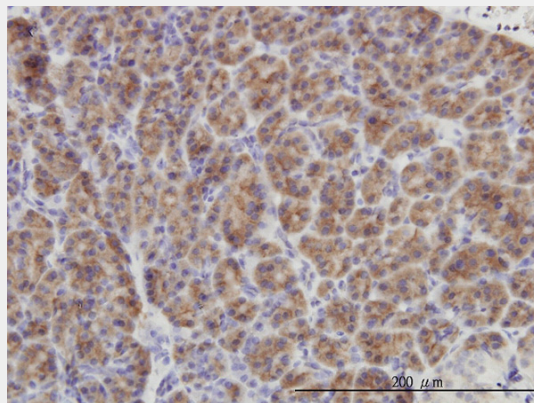


Western Blot analysis of DUSP6 expression in transfected 293T cell line by DUSP6 monoclonal antibody (M01), clone 3G2.

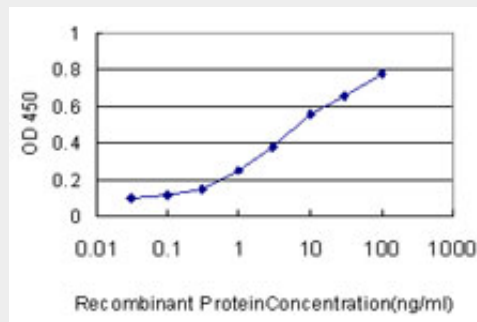
Lane 1: DUSP6 transfected lysate(42 KDa).
 Lane 2: Non-transfected lysate.



Western blot analysis of DUSP6 over-expressed 293 cell line, cotransfected with DUSP6 Validated Chimera RNAi ((Cat # AT1830a)



Immunoperoxidase of monoclonal antibody to DUSP6 on formalin-fixed paraffin-embedded human pancreas. [antibody concentration 3 ug/ml]



Detection limit for recombinant GST tagged DUSP6 is approximately 1ng/ml as a capture antibody.

DUSP6 Antibody (monoclonal) (M01) - Background

The protein encoded by this gene is a member of the dual specificity protein phosphatase subfamily. These phosphatases inactivate their target kinases by dephosphorylating both the phosphoserine/threonine and phosphotyrosine residues. They negatively regulate members of the mitogen-activated protein (MAP) kinase superfamily (MAPK/ERK, SAPK/JNK, p38), which are associated with cellular proliferation and differentiation. Different members of the family of dual specificity phosphatases show distinct substrate specificities for various MAP kinases, different tissue distribution and subcellular localization, and different modes of inducibility of their expression by extracellular stimuli. This gene product inactivates ERK2, is expressed in a variety of tissues with the highest levels in heart and pancreas, and unlike most other members of this family, is localized in the cytoplasm. Two transcript variants encoding different isoforms have been found for this gene.

DUSP6 Antibody (monoclonal) (M01) - References

1. Dual specificity phosphatase 6 as a predictor of invasiveness in papillary thyroid cancer. Lee JU, Huang S, Lee MH, Lee SE, Ryu MJ, Kim SJ, Kim YK, Kim SY, Joung KH, Kim JM, Shong M, Jo YS. *Eur J Endocrinol.* 2012 Jul;167(1):93-101. Epub 2012 Apr 25. 2. Down-Regulation of DUSP6 Expression in Lung Cancer: Its Mechanism and Potential Role in Carcinogenesis. Okudela K, Yazawa T, Woo T, Sakaeda M, Ishii J, Mitsui H, Shimoyamada H, Sato H, Tajiri M, Ogawa N, Masuda M, Takahashi T, Sugimura H, Kitamura H. *Am J Pathol.* 2009 Aug;175(2):867-81. Epub 2009 Jul 16.