

**DPH1 Antibody (monoclonal) (M02)**

Mouse monoclonal antibody raised against a partial recombinant DPH1.

Catalog # AT1812a

**Specification**

---

**DPH1 Antibody (monoclonal) (M02) - Product Information**

Application	IF, WB
Primary Accession	<a href="#">O9BZG8</a>
Other Accession	<a href="#">NM_001383</a>
Reactivity	Human
Host	mouse
Clonality	Monoclonal
Isotype	IgG2b Kappa
Calculated MW	48134

**DPH1 Antibody (monoclonal) (M02) - Additional Information**

Gene ID 1801

**Other Names**

Diphthamide biosynthesis protein 1, DPH1 homolog, HsDph1, Diphthamide biosynthesis protein 2 homolog-like 1, DPH-like 1, DPH2-like 1, Diphthamide biosynthesis protein 2-like, Ovarian cancer-associated gene 1 protein, DPH1, DPH2L, DPH2L1, OVCA1

**Target/Specificity**

DPH1 (NP\_001374, 216 a.a. ~ 324 a.a) partial recombinant protein with GST tag. MW of the GST tag alone is 26 KDa.

**Dilution**

WB~~1:500~1000

**Format**

Clear, colorless solution in phosphate buffered saline, pH 7.2 .

**Storage**

Store at -20°C or lower. Aliquot to avoid repeated freezing and thawing.

**Precautions**

DPH1 Antibody (monoclonal) (M02) is for research use only and not for use in diagnostic or therapeutic procedures.

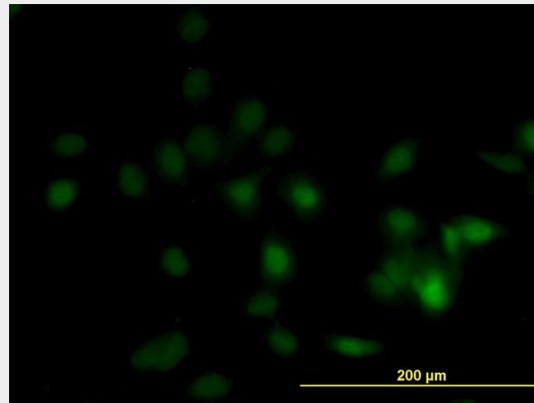
**DPH1 Antibody (monoclonal) (M02) - Protocols**

Provided below are standard protocols that you may find useful for product applications.

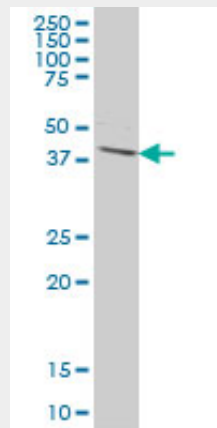
- [Western Blot](#)
- [Blocking Peptides](#)

- [Dot Blot](#)
- [Immunohistochemistry](#)
- [Immunofluorescence](#)
- [Immunoprecipitation](#)
- [Flow Cytometry](#)
- [Cell Culture](#)

### DPH1 Antibody (monoclonal) (M02) - Images



Immunofluorescence of monoclonal antibody to DPH1 on HeLa cell. [antibody concentration 10 ug/ml]



DPH1 monoclonal antibody (M02), clone 2C5 Western Blot analysis of DPH1 expression in HeLa (Cat # L013V1).

### DPH1 Antibody (monoclonal) (M02) - Background

Diphthamide is a unique posttranslationally modified histidine found only in translation elongation factor-2 (EEF2; MIM 130610). This modification is conserved from archaeobacteria to humans and serves as the target for ADP-ribosylation and inactivation of EEF2 by diphtheria toxin (DT) and Pseudomonas exotoxin A. DPH1 is 1 of several enzymes involved in synthesis of diphthamide in EEF2 (Liu et al., 2004 [PubMed 15485916]).

### DPH1 Antibody (monoclonal) (M02) - References

Identification of the proteins required for biosynthesis of diphthamide, the target of bacterial ADP-ribosylating toxins on translation elongation factor 2. Liu S, et al. Mol Cell Biol, 2004 Nov. PMID 15485916. Complete sequencing and characterization of 21,243 full-length human cDNAs. Ota T, et al. Nat Genet, 2004 Jan. PMID 14702039. Refinement of a 400-kb critical region allows genotypic

differentiation between isolated lissencephaly, Miller-Dieker syndrome, and other phenotypes secondary to deletions of 17p13.3. Cardoso C, et al. Am J Hum Genet, 2003 Apr. PMID 12621583. Generation and initial analysis of more than 15,000 full-length human and mouse cDNA sequences. Strausberg RL, et al. Proc Natl Acad Sci U S A, 2002 Dec 24. PMID 12477932. Cloning, structure, and expression of the mouse Ovca1 gene. Chen CM, et al. Biochem Biophys Res Commun, 2001 Sep 7. PMID 11527402.