

DNASE1L1 Antibody (monoclonal) (M02)

Mouse monoclonal antibody raised against a full length recombinant DNASE1L1.

Catalog # AT1798a

Specification

DNASE1L1 Antibody (monoclonal) (M02) - Product Information

Application	WB, E
Primary Accession	P49184
Other Accession	BC001561
Reactivity	Human
Host	mouse
Clonality	Monoclonal
Isotype	IgG1 Kappa
Calculated MW	33893

DNASE1L1 Antibody (monoclonal) (M02) - Additional Information

Gene ID 1774

Other Names

Deoxyribonuclease-1-like 1, 3121-, DNase X, Deoxyribonuclease I-like 1, DNase I-like 1, Muscle-specific DNase I-like, XIB, DNASE1L1, DNAS1L1, DNL1L

Target/Specificity

DNASE1L1 (AAH01561, 18 a.a. ~ 302 a.a) full-length recombinant protein with GST tag. MW of the GST tag alone is 26 KDa.

Dilution

WB~~1:500~1000

Format

Clear, colorless solution in phosphate buffered saline, pH 7.2 .

Storage

Store at -20°C or lower. Aliquot to avoid repeated freezing and thawing.

Precautions

DNASE1L1 Antibody (monoclonal) (M02) is for research use only and not for use in diagnostic or therapeutic procedures.

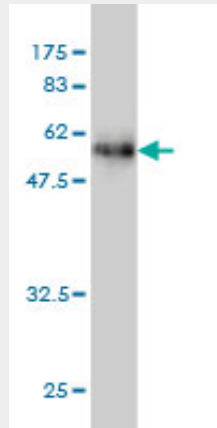
DNASE1L1 Antibody (monoclonal) (M02) - Protocols

Provided below are standard protocols that you may find useful for product applications.

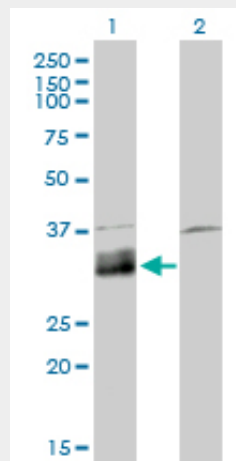
- [Western Blot](#)
- [Blocking Peptides](#)
- [Dot Blot](#)

- [Immunohistochemistry](#)
- [Immunofluorescence](#)
- [Immunoprecipitation](#)
- [Flow Cytometry](#)
- [Cell Culture](#)

DNASE1L1 Antibody (monoclonal) (M02) - Images



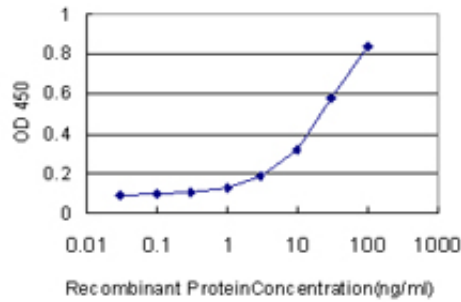
Antibody Reactive Against Recombinant Protein. Western Blot detection against Immunogen (57.09 kDa) .



Western Blot analysis of DNASE1L1 expression in transfected 293T cell line by DNASE1L1 monoclonal antibody (M02), clone 4E8.

Lane 1: DNASE1L1 transfected lysate(33.9 kDa).

Lane 2: Non-transfected lysate.



Detection limit for recombinant GST tagged DNASE1L1 is approximately 0.3ng/ml as a capture antibody.

DNASE1L1 Antibody (monoclonal) (M02) - Background

This gene encodes a member of the deoxyribonuclease family and the protein shows high sequence similarity to lysosomal DNase I. Alternate transcriptional splice variants, encoding the same protein, have been characterized.

DNASE1L1 Antibody (monoclonal) (M02) - References

Variation at the NFATC2 Locus Increases the Risk of Thiazolidinedione-Induced Edema in the Diabetes REduction Assessment with ramipril and rosiglitazone Medication (DREAM) Study. Bailey SD, et al. *Diabetes Care*, 2010 Jul 13. PMID 20628086. Genetic and expression analysis of all non-synonymous single nucleotide polymorphisms in the human deoxyribonuclease I-like 1 and 2 genes. Ueki M, et al. *Electrophoresis*, 2010 Jun. PMID 20503202. Gene-centric association signals for lipids and apolipoproteins identified via the HumanCVD BeadChip. Talmud PJ, et al. *Am J Hum Genet*, 2009 Nov. PMID 19913121. Isolation, differential splicing and protein expression of a DNase on the human X chromosome. Coy JF, et al. *Cell Death Differ*, 1996 Apr. PMID 17180083. The LIFEdb database in 2006. Mehrle A, et al. *Nucleic Acids Res*, 2006 Jan 1. PMID 16381901.