

**DLX5 Antibody (monoclonal) (M07)**

Mouse monoclonal antibody raised against a partial recombinant DLX5.

Catalog # AT1782a

**Specification**

---

**DLX5 Antibody (monoclonal) (M07) - Product Information**

Application	IF, E
Primary Accession	<a href="#">P56178</a>
Other Accession	<a href="#">NM_005221</a>
Reactivity	Human
Host	mouse
Clonality	Monoclonal
Isotype	IgG2a Kappa
Calculated MW	31540

**DLX5 Antibody (monoclonal) (M07) - Additional Information**

Gene ID 1749

**Other Names**

Homeobox protein DLX-5, DLX5

**Target/Specificity**

DLX5 (NP\_005212, 1 a.a. ~ 110 a.a) partial recombinant protein with GST tag. MW of the GST tag alone is 26 KDa.

**Format**

Clear, colorless solution in phosphate buffered saline, pH 7.2 .

**Storage**

Store at -20°C or lower. Aliquot to avoid repeated freezing and thawing.

**Precautions**

DLX5 Antibody (monoclonal) (M07) is for research use only and not for use in diagnostic or therapeutic procedures.

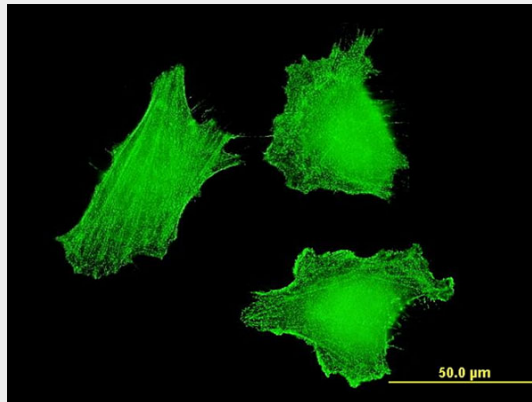
**DLX5 Antibody (monoclonal) (M07) - Protocols**

Provided below are standard protocols that you may find useful for product applications.

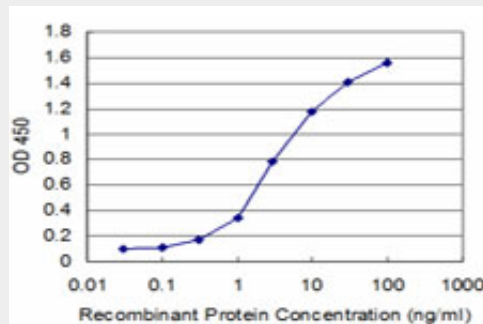
- [Western Blot](#)
- [Blocking Peptides](#)
- [Dot Blot](#)
- [Immunohistochemistry](#)
- [Immunofluorescence](#)
- [Immunoprecipitation](#)
- [Flow Cytometry](#)

- [Cell Culture](#)

### DLX5 Antibody (monoclonal) (M07) - Images



Immunofluorescence of monoclonal antibody to DLX5 on HeLa cell . [antibody concentration 10 ug/ml]



Detection limit for recombinant GST tagged DLX5 is approximately 0.3ng/ml as a capture antibody.

### DLX5 Antibody (monoclonal) (M07) - Background

This gene encodes a member of a homeobox transcription factor gene family similar to the *Drosophila* distal-less gene. The encoded protein may play a role in bone development and fracture healing. Mutation in this gene, which is located in a tail-to-tail configuration with another member of the family on the long arm of chromosome 7, may be associated with split-hand/split-foot malformation.

### DLX5 Antibody (monoclonal) (M07) - References

Maternal genes and facial clefts in offspring: a comprehensive search for genetic associations in two population-based cleft studies from Scandinavia. Jugessur A, et al. PLoS One, 2010 Jul 9. PMID 20634891. DLX5 (distal-less homeobox 5) promotes tumor cell proliferation by transcriptionally regulating MYC. Xu J, et al. J Biol Chem, 2009 Jul 31. PMID 19497851. High-density association study of 383 candidate genes for volumetric BMD at the femoral neck and lumbar spine among older men. Yerges LM, et al. J Bone Miner Res, 2009 Dec. PMID 19453261. Expression analysis and mutation detection of DLX5 and DLX6 in autism. Nakashima N, et al. Brain Dev, 2010 Feb. PMID 19195802. Activation of placenta-specific transcription factor distal-less homeobox 5 predicts clinical outcome in primary lung cancer patients. Kato T, et al. Clin Cancer Res, 2008 Apr 15. PMID 18413826.